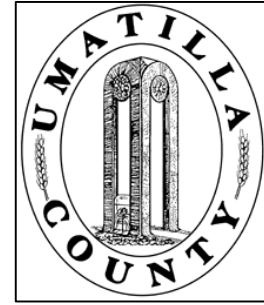


This map was prepared for Assessment & Taxation purposes only and was NOT prepared nor is it suitable for legal, engineering or surveying purposes.



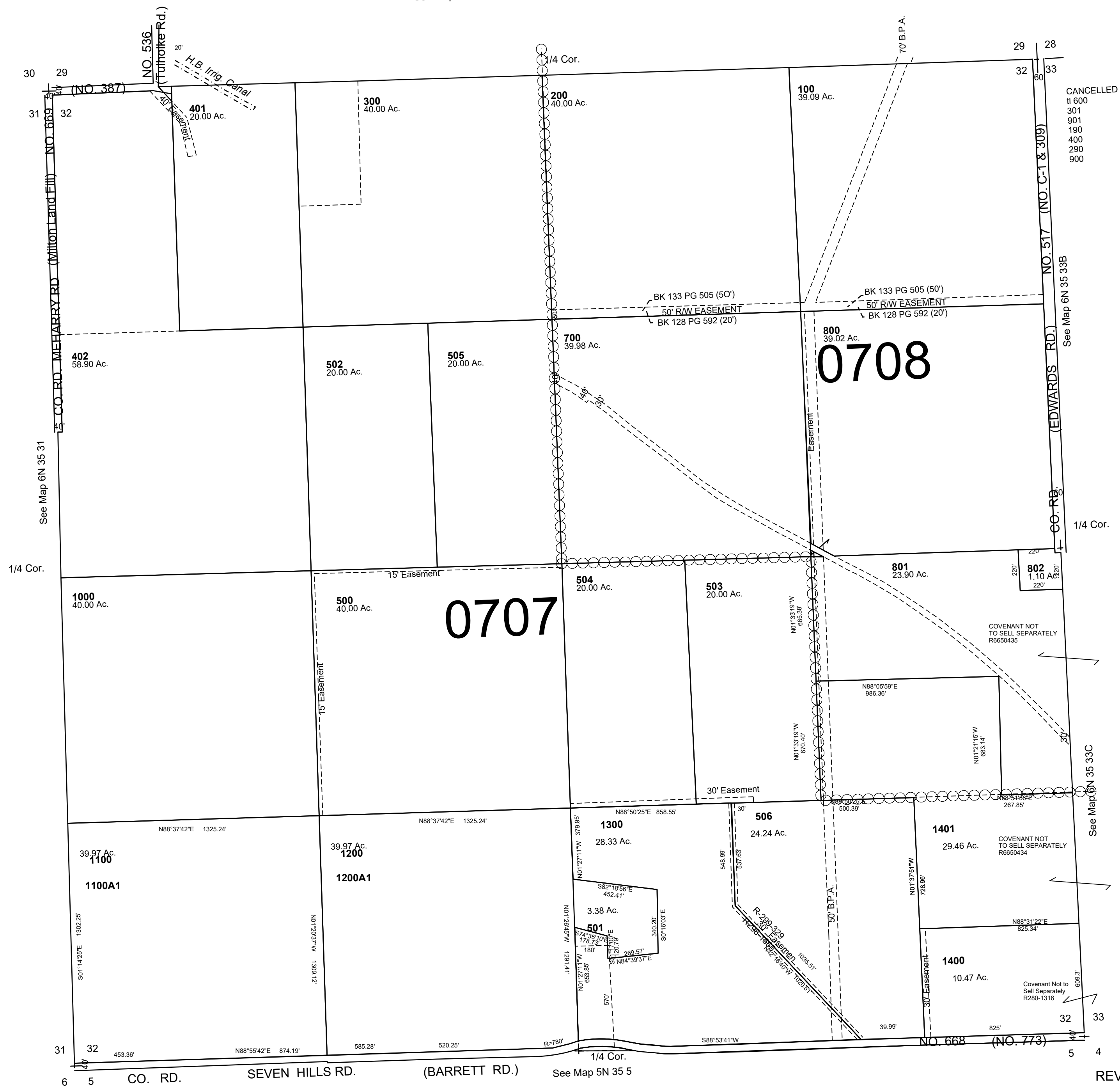
SEC 32 T 6N R 35E WM
UMATILLA COUNTY

SCALE: 1" = 400'

6N 35 32

AERIAL PHOTO NO. NZ-6P-60

See Map 6N 35 29



REVISED: 09-09-2021

6N 35 32