

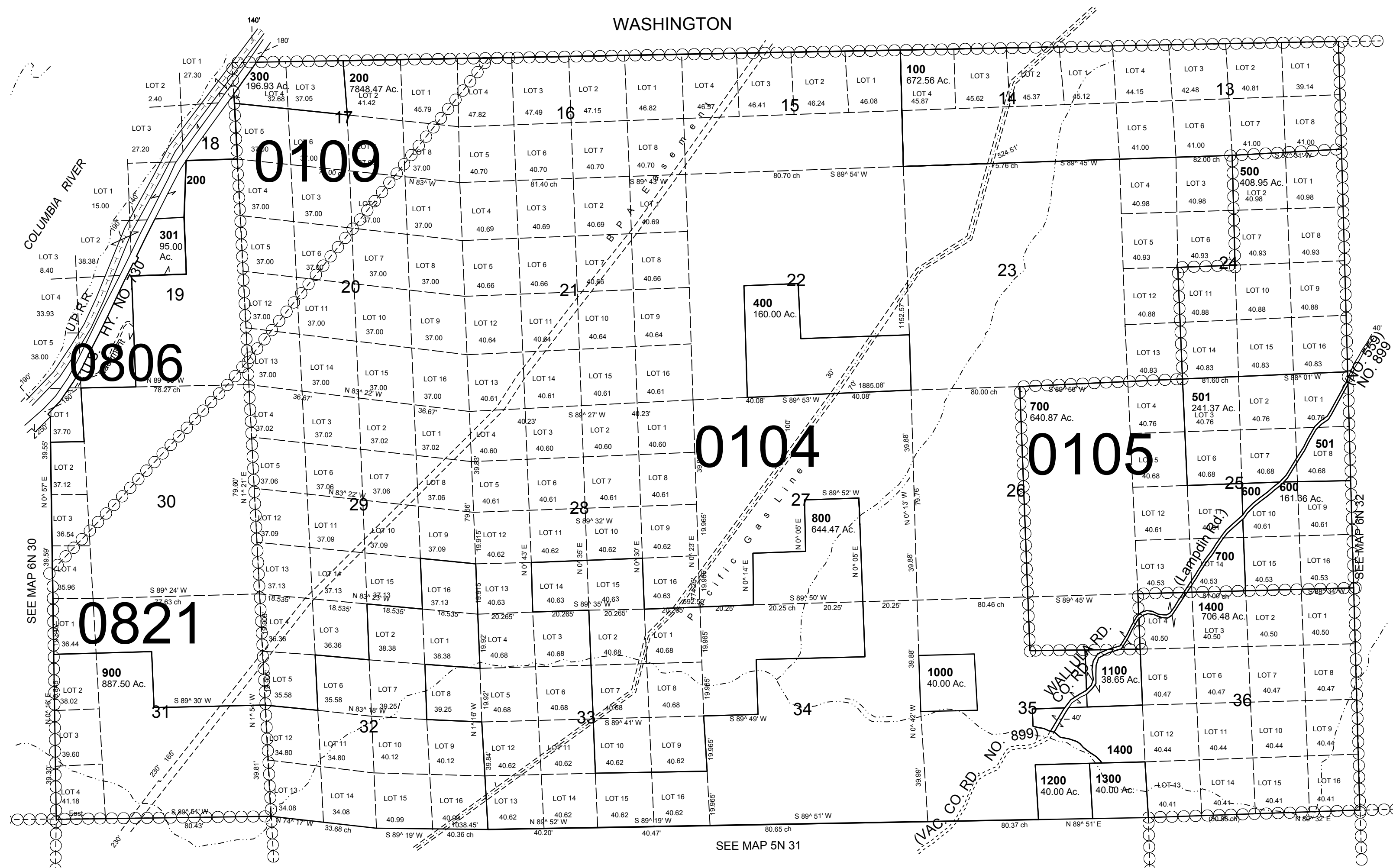
This map was prepared for Assessment & Taxation purposes only and was NOT prepared nor is it suitable for legal, engineering or surveying purposes.

T6N R31E WM  
UMATILLA COUNTY

6N 31

AERIAL PHOTO NO. NZ 1P-4, 5-8 & 16-19

SCALE 1"=2000'



REVISED: 11-28-16

6N 31