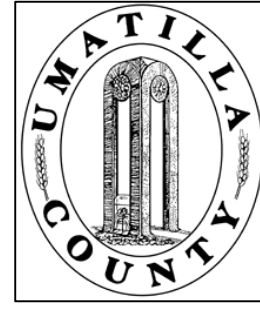


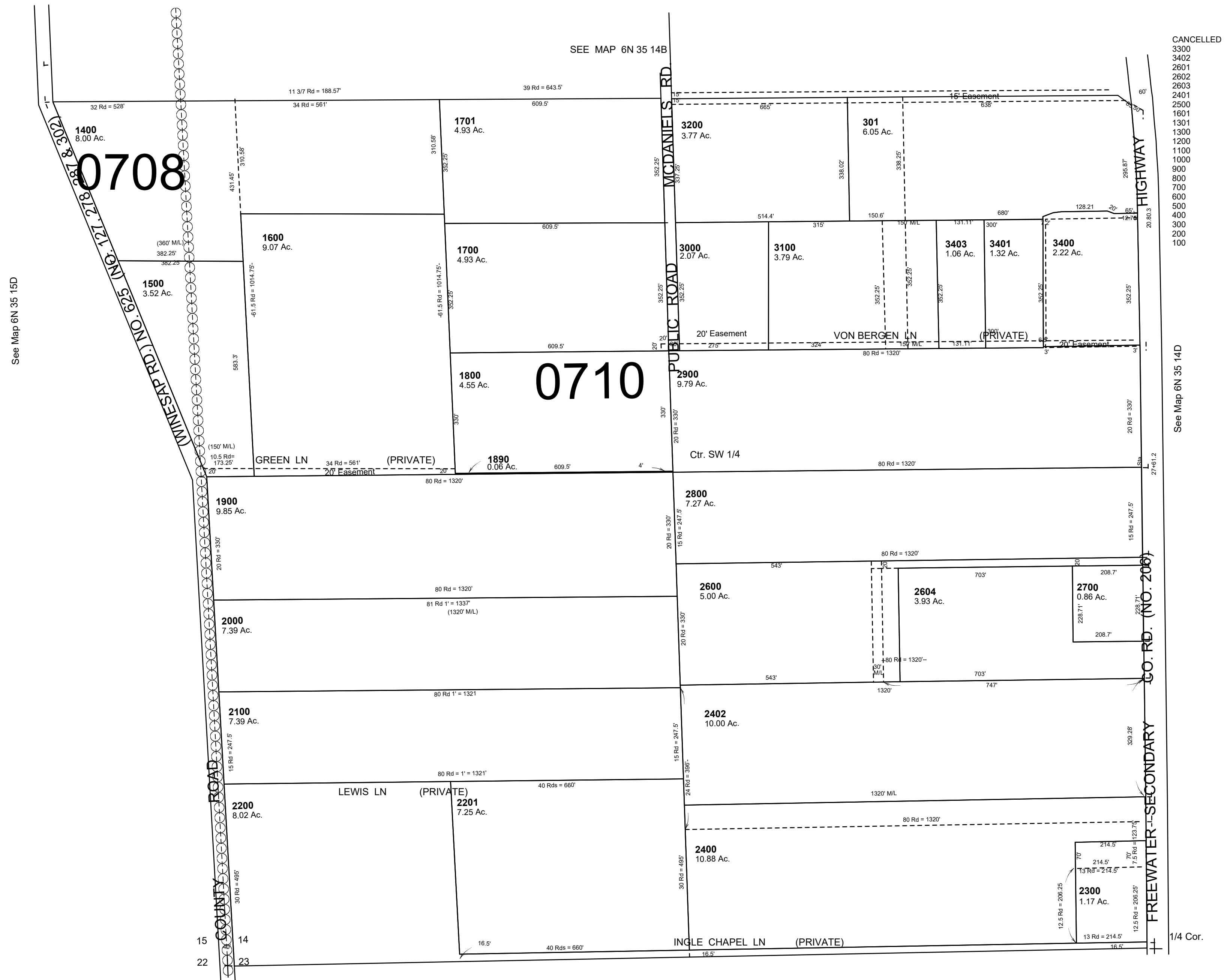
This map was prepared for Assessment & Taxation purposes only and was NOT prepared nor is it suitable for legal, engineering or surveying purposes.



SW1/4 SEC 14 T6N R35E WM UMATILLA COUNTY, OR

SCALE: 1" = 200

6N 35 14C
AERIAL PHOTO NO. NZ-6P-19



CANCELLED
3300
3402
2601
2602
2603
2401
2500
1601
1301
1300
1200
1100
900
800
700
600
500
400
300
200
100

See Map 6N 35 14D

See Map 6N 35 23B

REVISED:09-09-2021 6N 35 14C