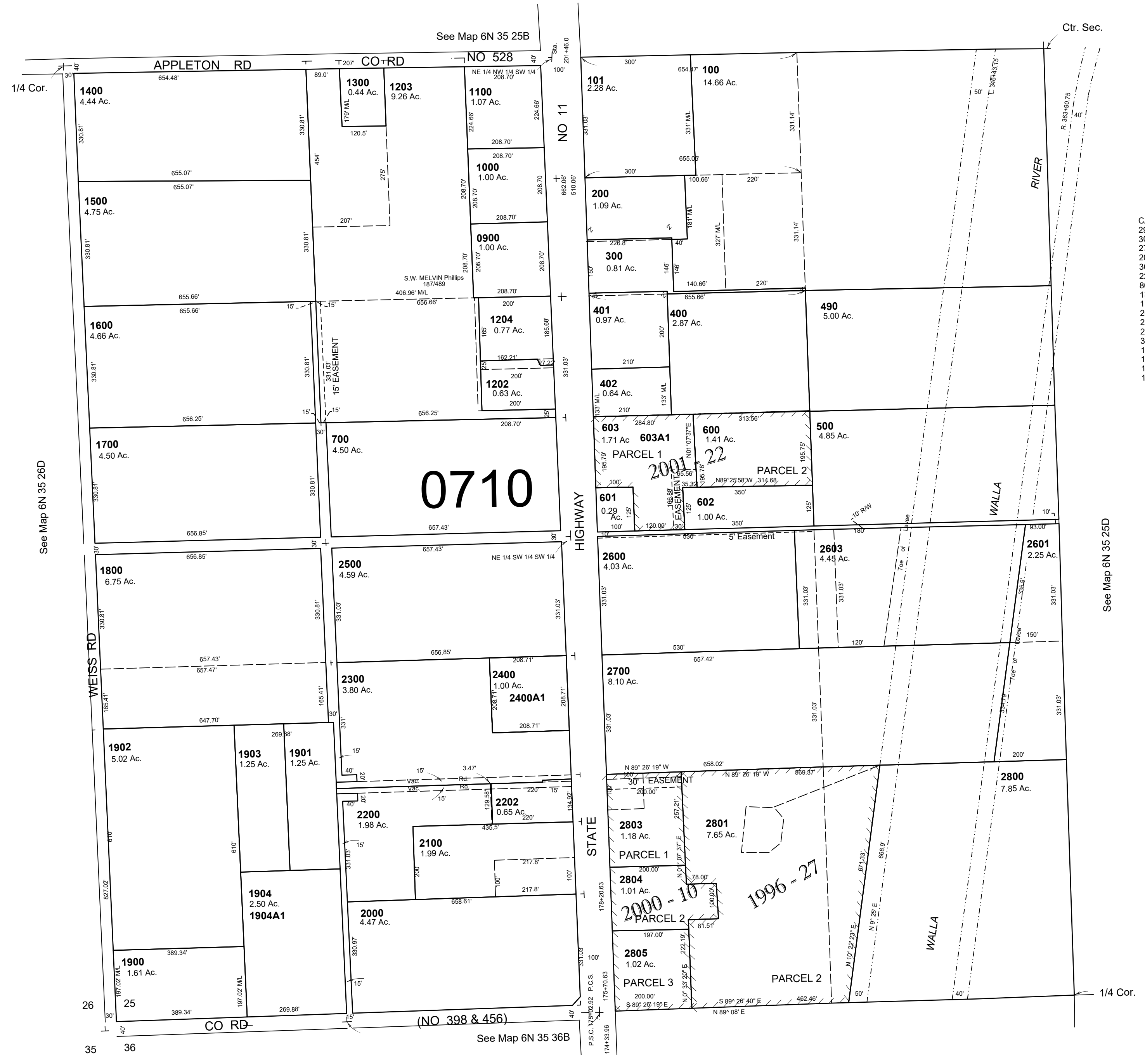


This map was prepared for Assessment & Taxation purposes only and was NOT prepared nor is it suitable for legal, engineering or surveying purposes.

# SW 1/4 SEC 25 T6N R35E WM UMATILLA COUNTY SCALE 1"=200'

6N 35 25C  
AERIAL PHOTO NO. 6P-64'



Revised: 09-09-2021

## 6N 35 25C