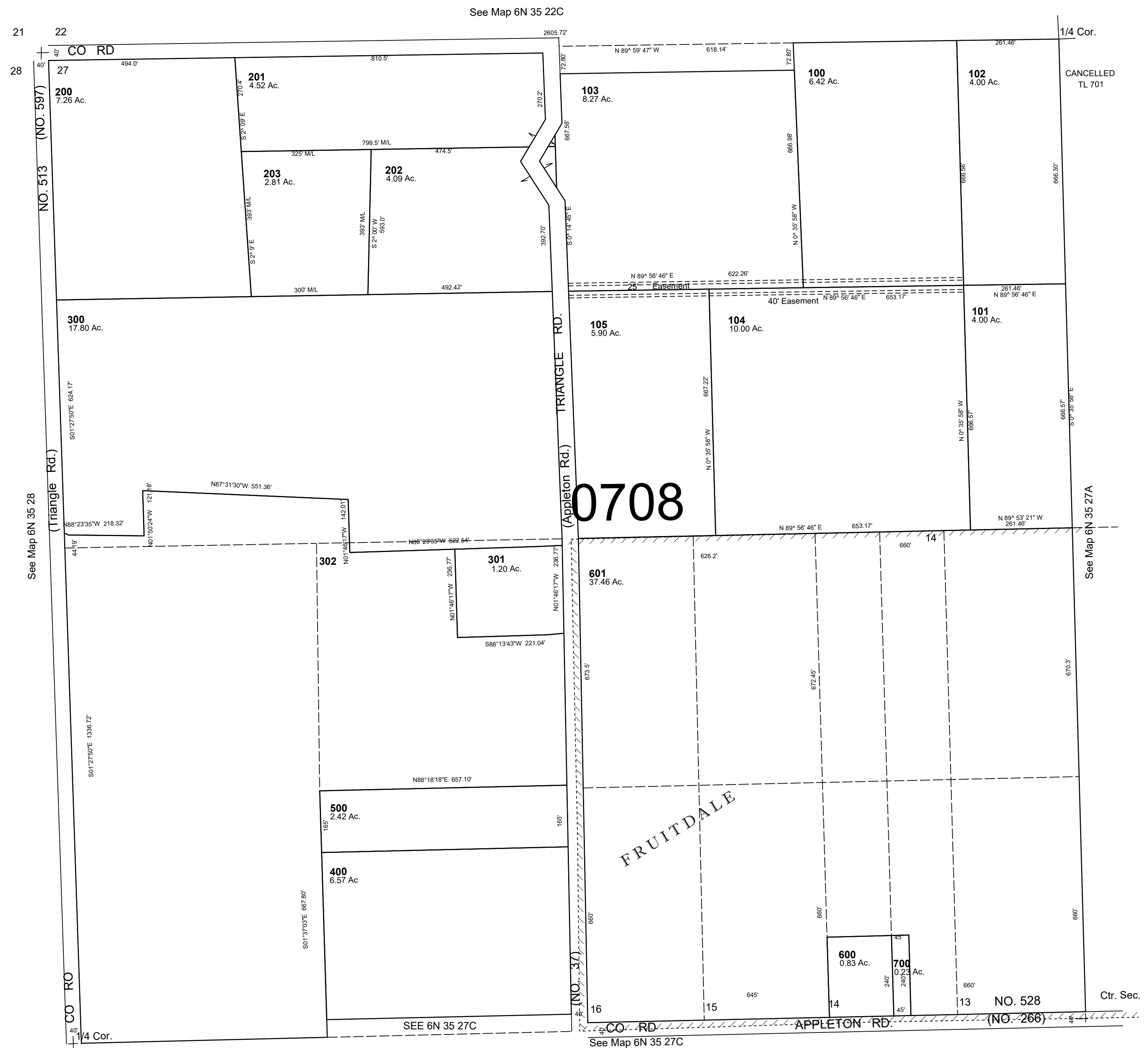


This map was prepared for Assessment & Taxation purposes only and was NOT prepared nor is it suitable for legal, engineering or surveying purposes.

NW 1/4 SEC 27 T6N R35E WM
UMATILLA COUNTY
SCALE 1"=200'

6N 35 27B

AERIAL PHOTO NO. 6P-61



REVISED 09-08-2021

6N 35 27B