

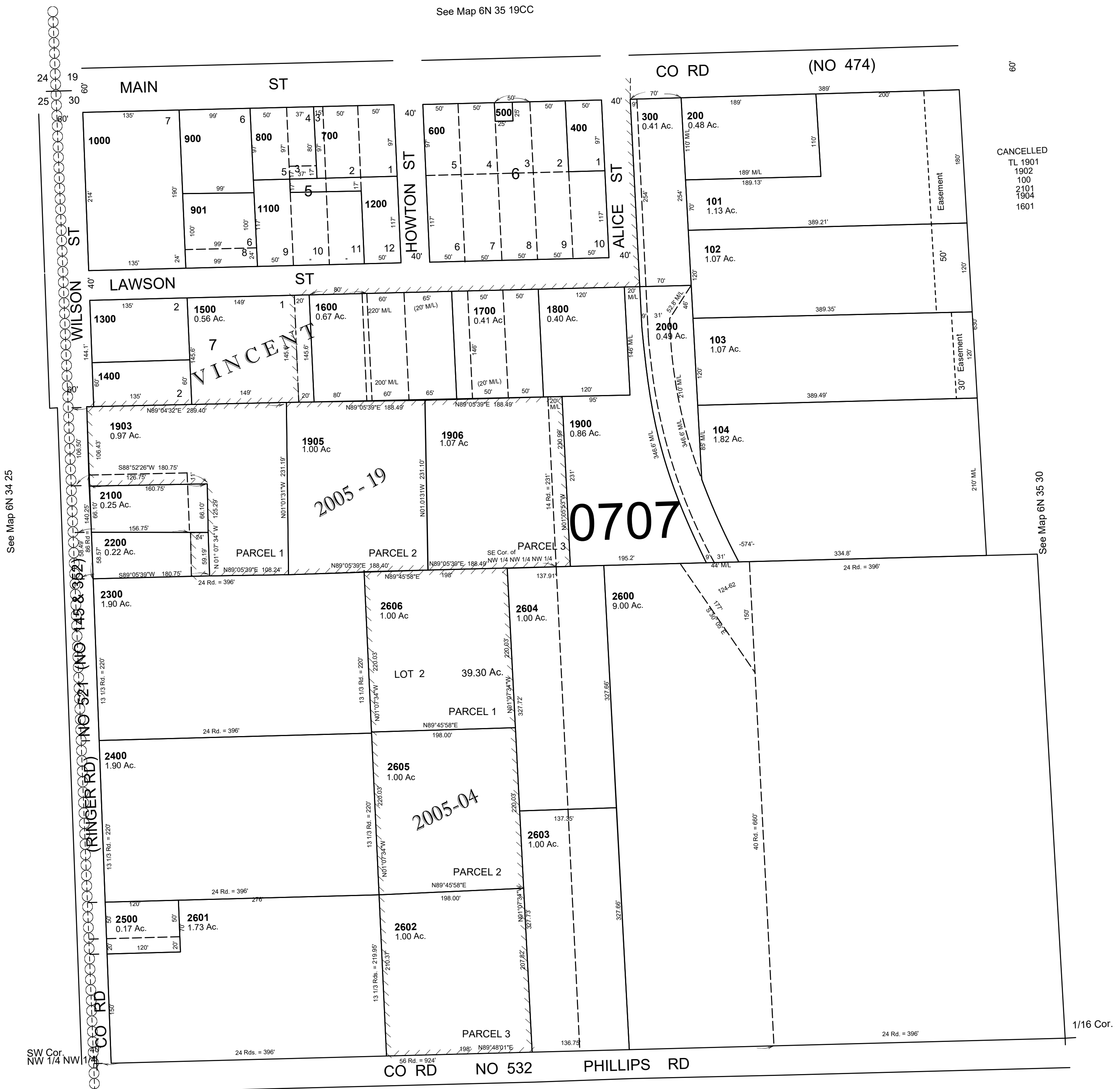
This map was prepared for Assessment & Taxation purposes only and was NOT prepared nor is it suitable for legal, engineering or surveying purposes.

NW 1/4 NW 1/4 SEC 30 T6N R35E WM UMATILLA COUNTY

6N 35 30BB

1"=100'

See Map 6N 35 19CC



CANCELLED
TL 1901
1902
100
2101
1904
1601

See Map 6N 34 25

See Map 6N 35 30

Revised: 09-09-2021

6N 35 30BB