

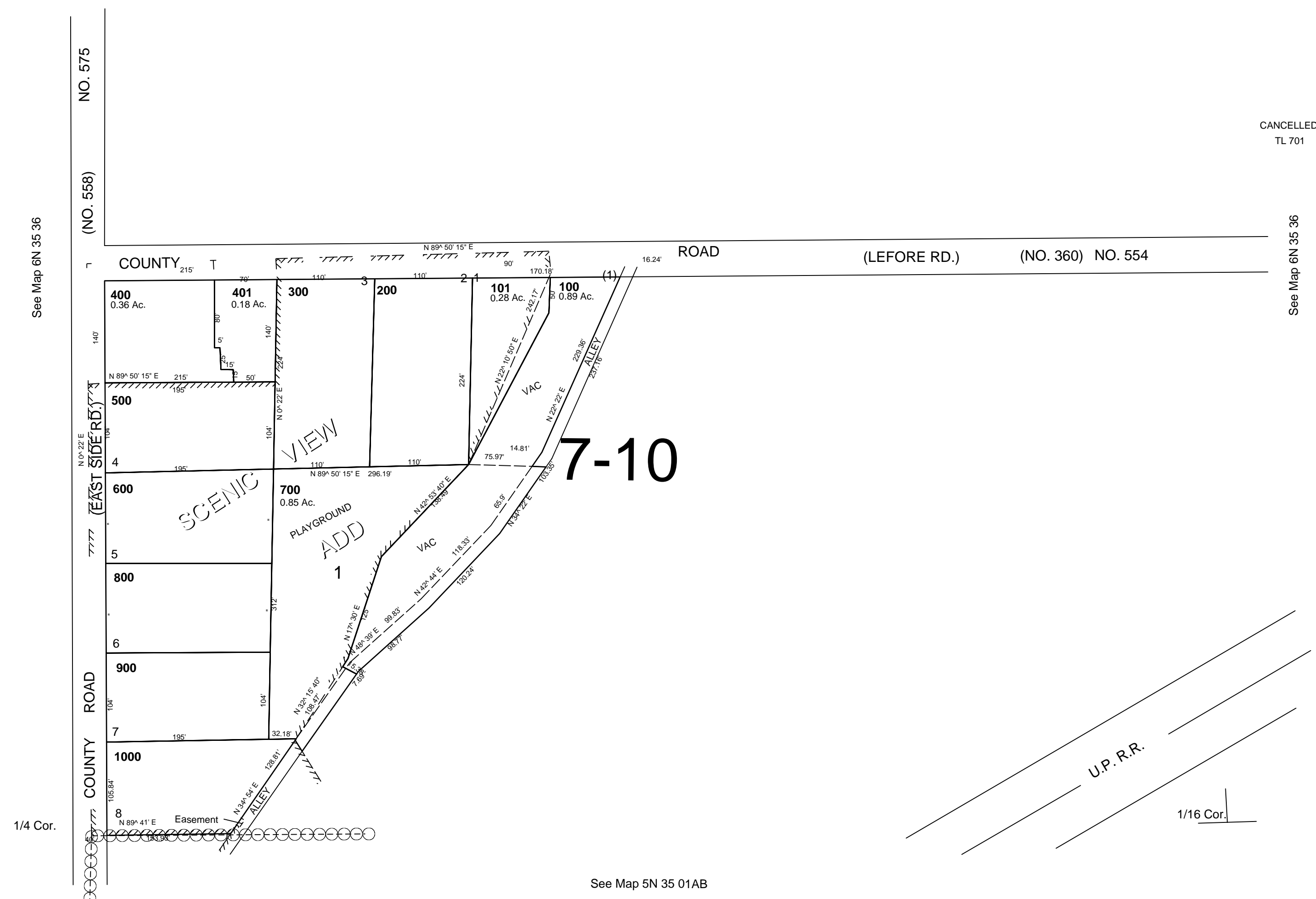
This map was prepared for assessment purposes

SW1/4 SE1/4 SEC 36 T6N R35E WM  
UMATILLA COUNTY  
SCALE 1"=200'

10/17/06

6N 35 36DC

AERIAL PHOTO NO., 11P-83



CANCELLED  
TL 701

See Map 6N 35 36

See Map 6N 35 36

See Map 5N 35 01AB

6N 35 36DC