

# Umatilla County Adaptive Farms: An Economic Analysis

- Profile current agricultural production by region
- Describe likely adaptive farming operations
- Estimate the financial feasibility and economic effects of each type of adaptive farm
- Discuss the findings with the public and scientists
- Summarize the findings in a final report and a PowerPoint presentation.

*Questions or Suggestions Contact:*  
Bruce Sorte, Community Economist  
OSU Rural Studies Program  
Phone: 541.962.3228  
Email: [bruce.sorte@oregonstate.edu](mailto:bruce.sorte@oregonstate.edu)



**Rural  
Studies  
Program**

# Limitations

- Can, will, could and should
- Enterprise budgets – examples and guides
- Outrunning the market
- Sweet cherries
- Blueberries
- Wine

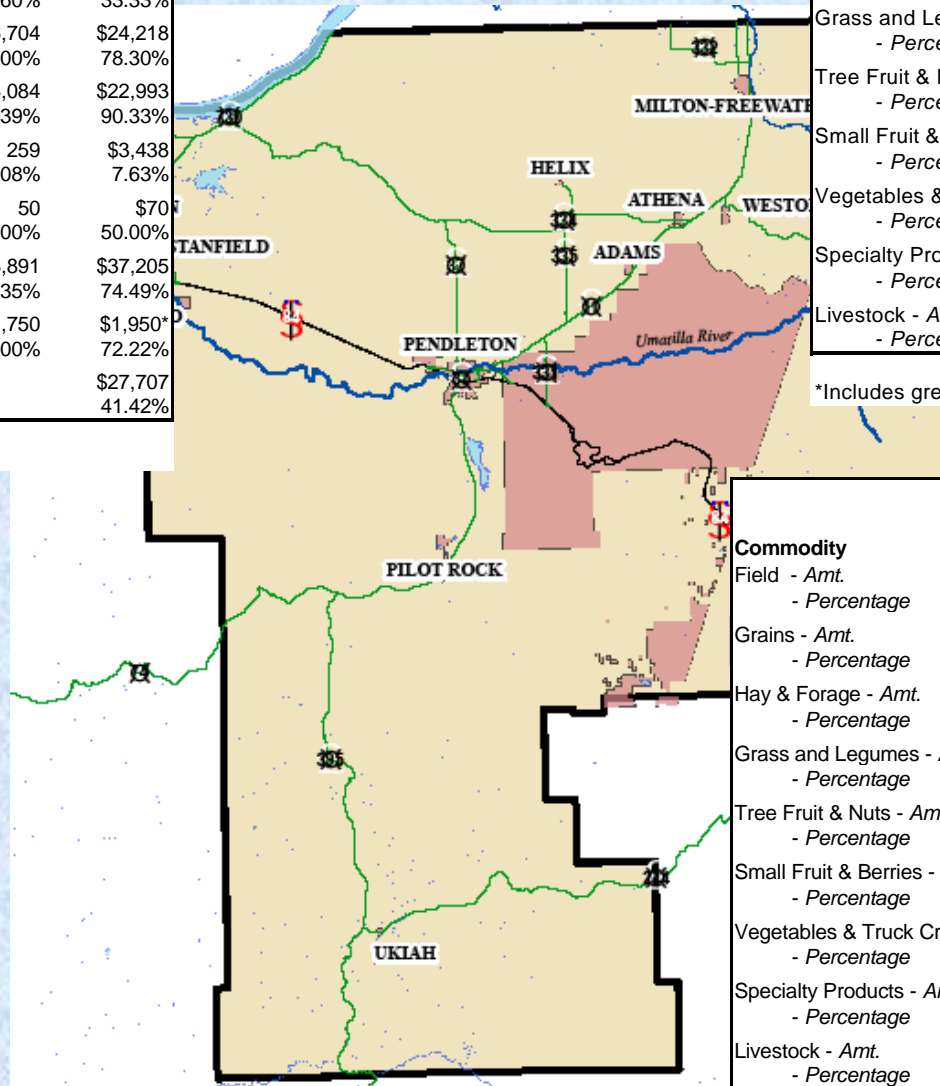
# Vn bujn Dpvouz BhsjvmsantQpevdupo !cz IS fhjo

Commodity	Acres Harvested	Value of Production (\$000)
Field - Amt.	17,152	\$55,332
- Percentage	77.65%	94.15%
Grains - Amt.	79,873	\$32,372
- Percentage	27.60%	33.33%
Hay & Forage - Amt.	16,704	\$24,218
- Percentage	80.00%	78.30%
Grass and Legumes - Amt.	14,084	\$22,993
- Percentage	90.39%	90.33%
Tree Fruit & Nuts - Amt.	259	\$3,438
- Percentage	6.08%	7.63%
Small Fruit & Berries - Amt.	50	\$70
- Percentage	50.00%	50.00%
Vegetables & Truck Crops - Amt.	13,891	\$37,205
- Percentage	45.35%	74.49%
Specialty Products - Amt.	1,750	\$1,950*
- Percentage	100.00%	72.22%
Livestock - Amt.		\$27,707
- Percentage		41.42%

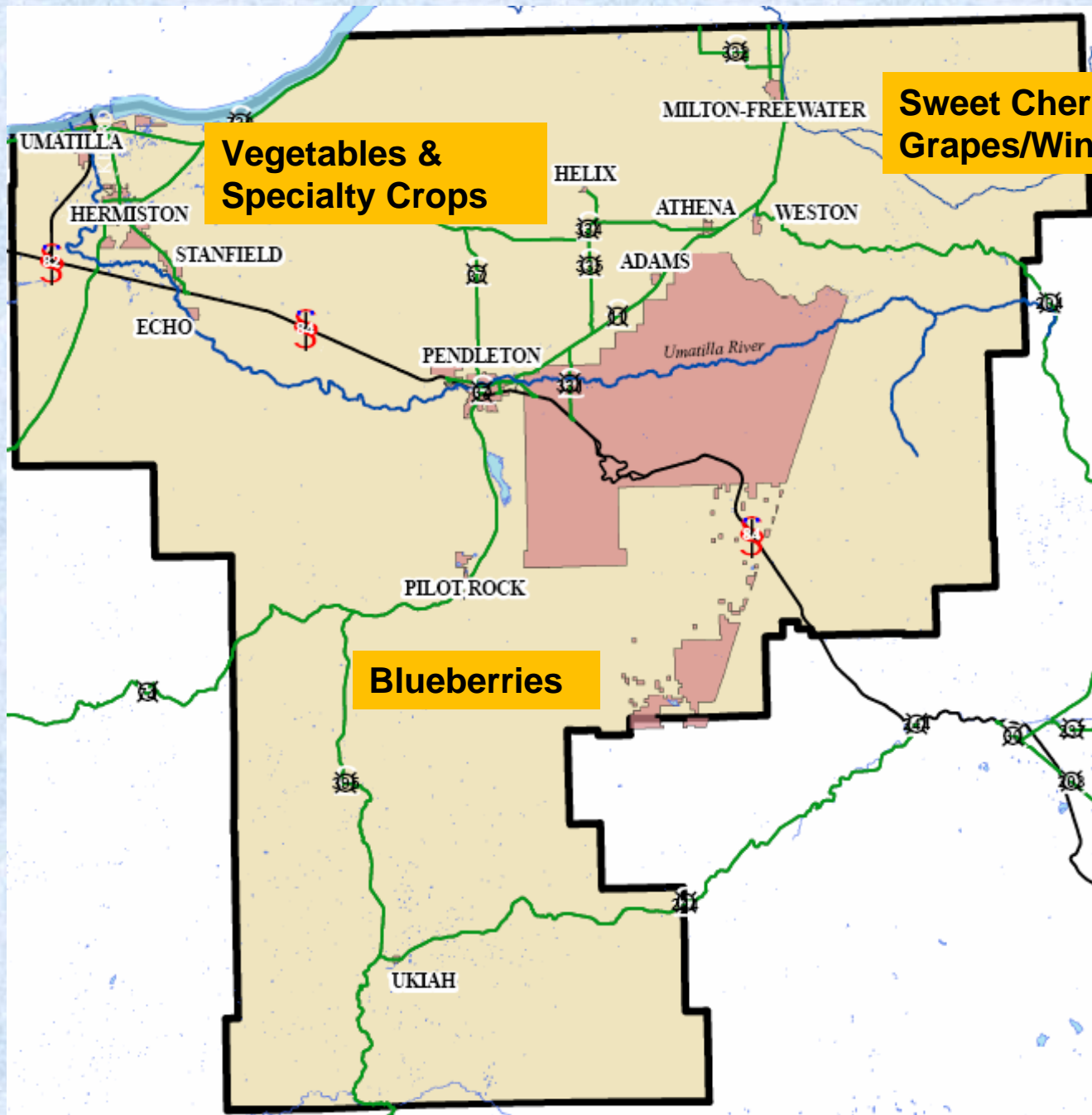
\*Includes greenhouse production

Commodity	Acres Harvested	Value of Production (\$000)
Field - Amt.	2,368	\$2,666
- Percentage	10.72%	4.54%
Grains - Amt.	68,373	\$21,332
- Percentage	23.63%	21.96%
Hay & Forage - Amt.	2,276	\$3,736
- Percentage	10.90%	12.08%
Grass and Legumes - Amt.	1,497	\$2,462
- Percentage	9.61%	9.67%
Tree Fruit & Nuts - Amt.	3,997	\$41,619
- Percentage	93.92%	92.37%
Small Fruit & Berries - Amt.	50	\$70
- Percentage	50.00%	50.00%
Vegetables & Truck Crops - Amt.	16,640	\$12,398
- Percentage	54.32%	24.82%
Specialty Products - Amt.	0	\$750*
- Percentage	0.00%	27.78%
Livestock - Amt.		\$10,055
- Percentage		15.03%

\*Includes greenhouse production



Commodity	Acres Harvested	Value of Production (\$000)
Field - Amt.	2,568	\$772
- Percentage	11.63%	1.31%
Grains - Amt.	141,105	\$43,421
- Percentage	48.77%	44.71%
Hay & Forage - Amt.	1,900	\$2,975
- Percentage	9.10%	9.62%
Grass and Legumes - Amt.	0	\$0
- Percentage	0.00%	0.00%
Tree Fruit & Nuts - Amt.	0	\$0
- Percentage	0.00%	0.00%
Small Fruit & Berries - Amt.	0	\$0
- Percentage	0.00%	0.00%
Vegetables & Truck Crops - Amt.	102	\$341
- Percentage	0.33%	0.68%
Specialty Products - Amt.	0	\$0
- Percentage	0.00%	0.00%
Livestock - Amt.		\$29,129
- Percentage		43.55%



**Vegetables & Specialty Crops**

**Sweet Cherries & Grapes/Winery**

**Blueberries**

Umatilla River

# Approach

- **Visit** with scientists, producers, planners, and a farmers' market organizer.
- **Study** current literature on possible crops and their production functions.
- **Select crops** that could be grown with no more than modest risk and could provide **net returns** equal to half of the Umatilla County median household income of **\$20,387**.
- Choose **examples with conservative returns** and that could have value added to achieve retail prices.
- Use *Impact PLANning* (IMPLAN) **economic model** to estimate the community economic effects in total sales.
- **Respect** the economic importance of the **existing conventional farms and ranches**.
- Discuss the **compatibility** between adaptive farms and larger farms and ranches looking toward the larger farms and ranches historical precedence.

# Net Returns Per Acre

- Vegetables \$2,000
- Specialty Crops \$1,283
- Sweet Cherries \$2,083
- Grapes w/winery \$7,992
- Blueberries \$4,242
- Wheat \$100

# Gross Returns Per Acre/Community Economic Effects



**Rural  
Studies  
Program**

- Vegetables \$4,670/\$6,600
- Specialty Crops \$3,165/\$4,699
- Sweet Cherries \$11,900/\$17,397
- Grapes/Winery \$39,438/\$53,475
- Blueberries \$14,670/\$16,764
- Wheat \$325/\$450

# Considerations



Rural  
Studies  
Program

- **Diverse** businesses and economies can be more **resilient** than concentrated businesses and economies.
- **Adaptive farms** of 10-40 acres with the benefits of 21<sup>st</sup> technology and hard work can be successful and persist.
- Challenges that need to be addressed at the time of siting include: **compatibility** with larger farms, **water, and market development**.
- Strengthening the adaptive farming portion of agriculture along with local foods initiatives has the potential to **draw visitors and potential residents** from a segment of consumers that may not be well acquainted with Umatilla County.

# What's next?

- Please contact me, if you want to visit about this study at 541.962.3228 or [bruce.sorte@oregonstate.edu](mailto:bruce.sorte@oregonstate.edu).
- In September we will publish the report.
- Thank you very much for spending your time this evening. I will do my best to include your ideas in the report.

# Rural Studies Program

<http://arec.oregonstate.edu/ruralstudies>



**Oregon State University**  
**213 Ballard Extension Hall**  
**Corvallis, OR 97331**  
**(541) 737-1442**

[rsp@oregonstate.edu](mailto:rsp@oregonstate.edu)

**OSU**  
Oregon State  
UNIVERSITY

**Rural  
Studies  
Program**