

This map was prepared for Assessment & Taxation purposes only and was NOT prepared nor is it suitable for legal, engineering or surveying purposes.

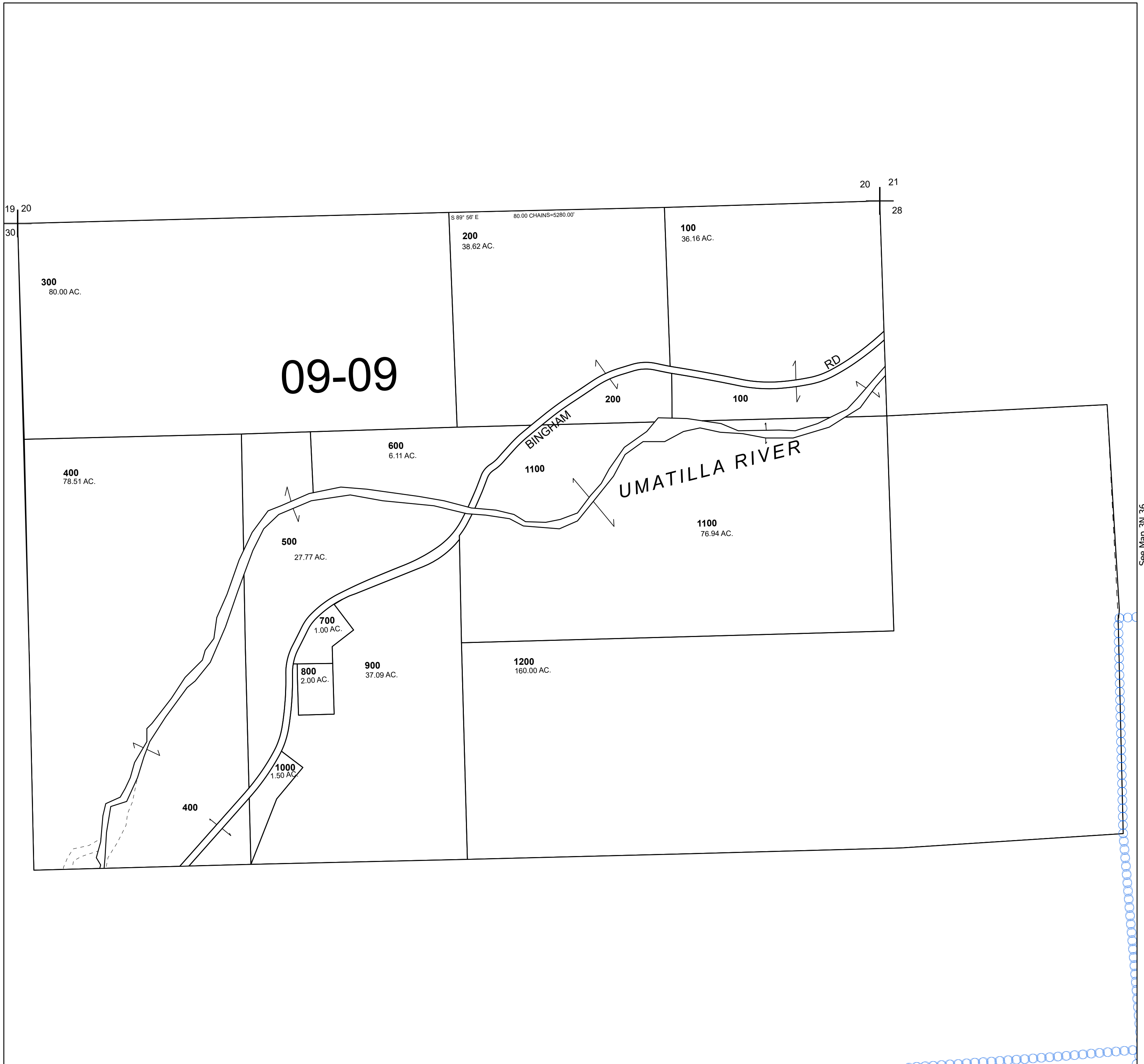
Cancelled Tax Lots

SEC 29 T3N R36E WM UMATILLA COUNTY

3N 36 29

SCALE 1" = 400'

See Map 3N 36



Revised 5/15/2026

See Map 3N 36

3N 36 29