

This map was prepared for Assessment & Taxation purposes only and was NOT prepared nor is it suitable for legal, engineering or surveying purposes.

Cancelled Tax Lots

NE 1/4 NW 1/4 SEC 02 T4N R28E WM

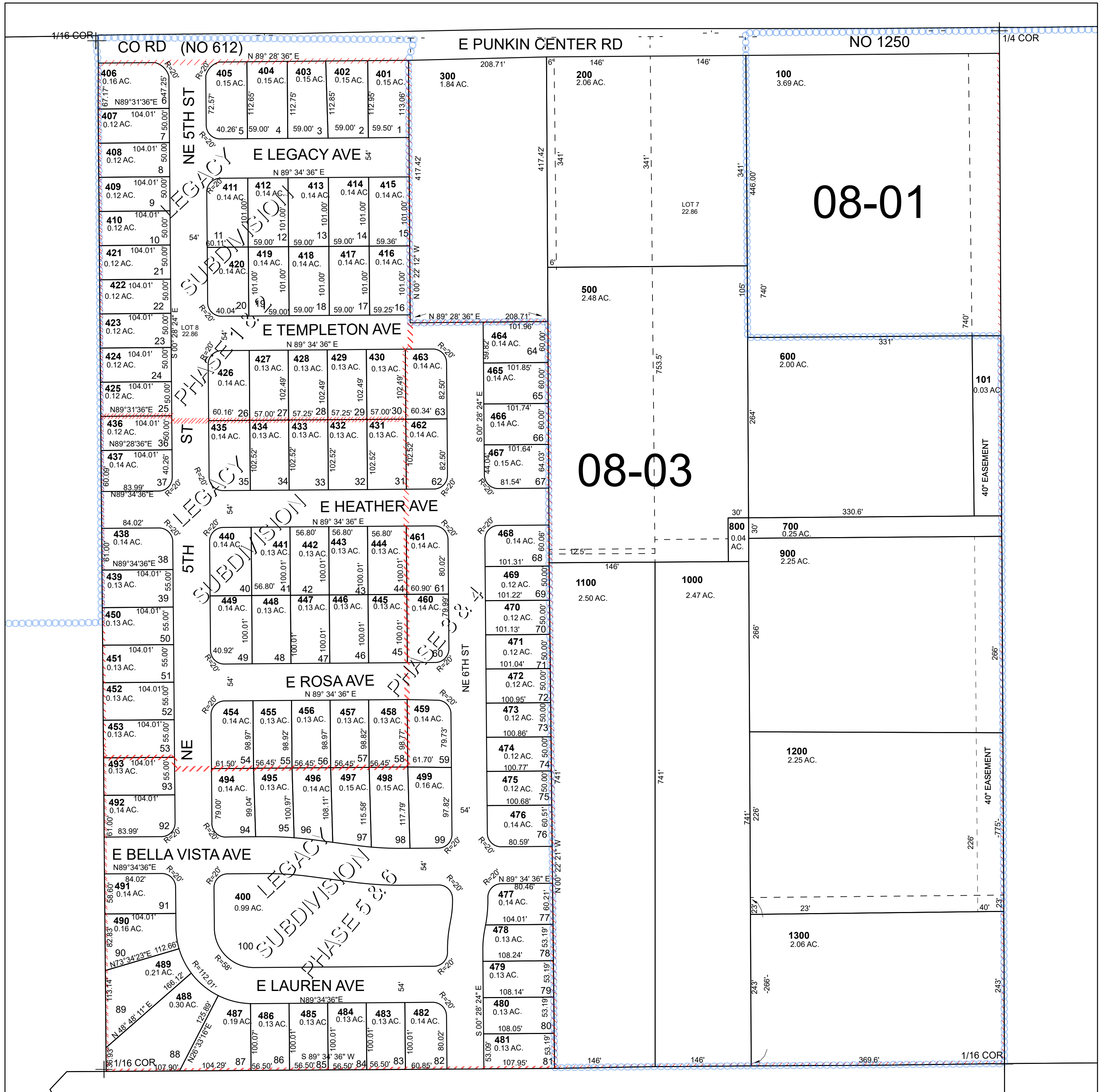
UMATILLA COUNTY

SCALE 1" = 100'

Hermiston

4N 28 02BA

See Map 5N 28 35C



See Map 4N 28 02BB

See Map 4N 28 02AB