

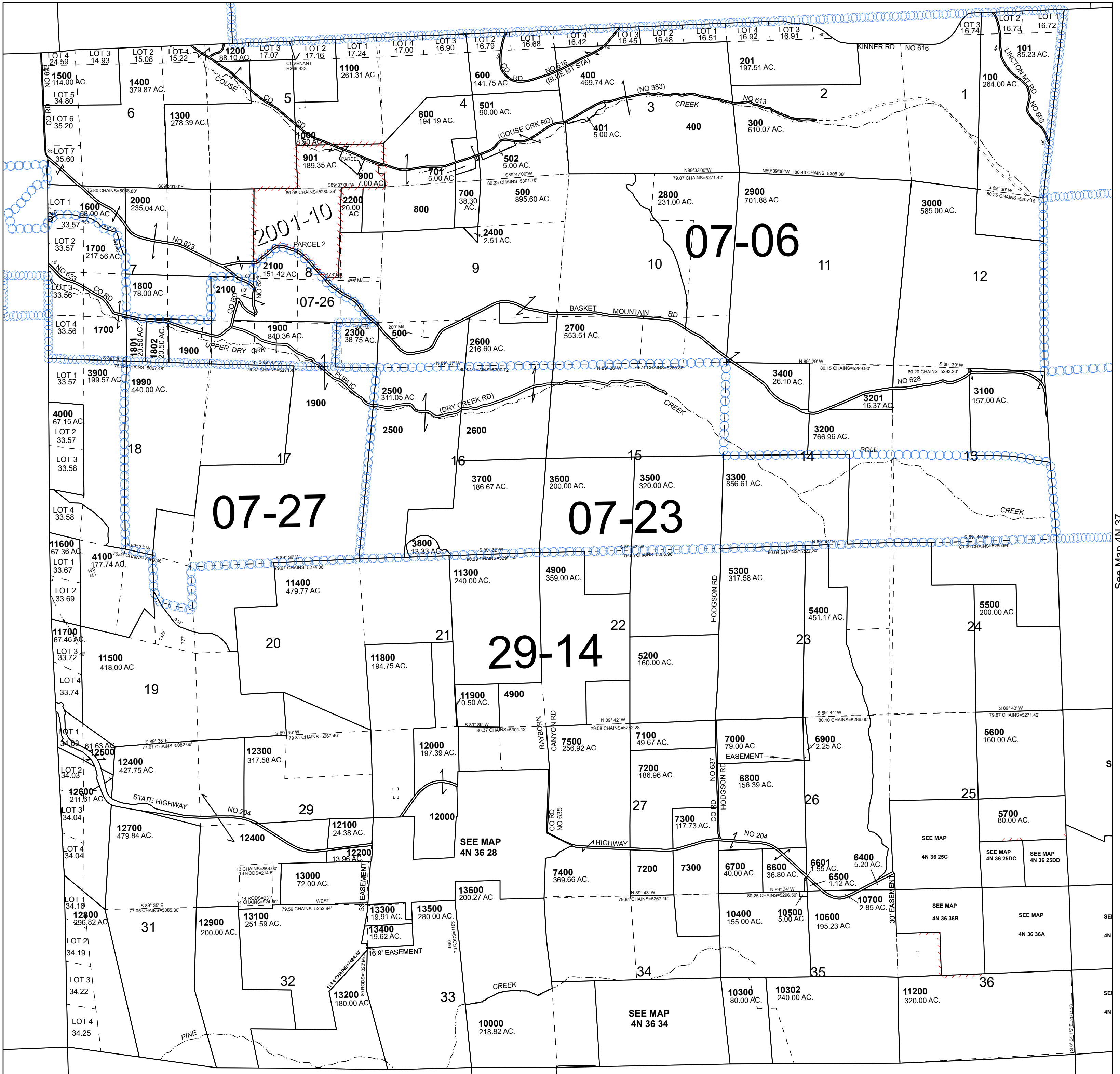
This map was prepared for Assessment & Taxation purposes only and was NOT prepared nor is it suitable for legal, engineering or surveying purposes.

T4N R36E WM UMATILLA COUNTY SCALE 1" = 2,000'

4N 36

| Cancelled Tax Lots | | | | | |
|--------------------|-----------|------|-----------|-----------|-------------|
| 200 | 4601 | 6300 | 8300-8303 | 9200 | 10200 |
| 590 | 4700 | 7600 | 8400 | 9300 | 10201 |
| 900A1 | 4800 | 7700 | 8500 | 9400 | 10301 |
| 1190 | 5000 | 7800 | 8600 | 9500 | 10800-10817 |
| 4200 | 5100 | 7801 | 8700 | 9600 | 10900 |
| 4290 | 5800-5806 | 7890 | 8800 | 9700 | 10901 |
| 4300 | 5900 | 7900 | 8900 | 9800-9802 | 11000-11004 |
| 4400 | 6000-6006 | 8000 | 8901 | 9900 | 11100 |
| 4500 | 6100 | 8100 | 9000-9002 | 10000 | 11101 |
| 4501 | 6200 | 8200 | 9100 | 10100 | |

See Map 5N 36



See Map 4N 35

See Map 4N 37

4N 36