

This map was prepared for Assessment & Taxation purposes only and was NOT prepared nor is it suitable for legal, engineering or surveying purposes.

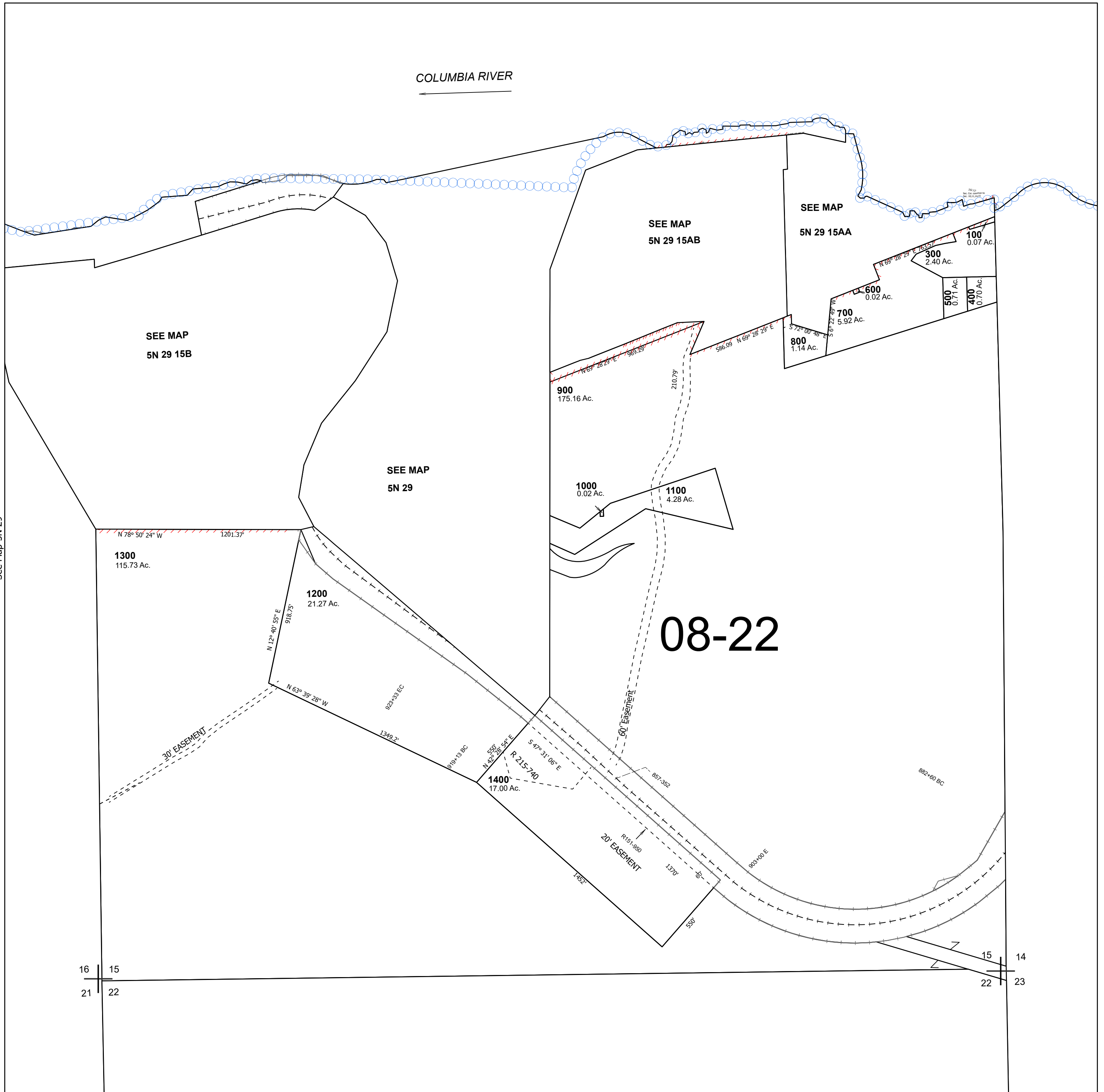
Cancelled Tax Lots  
200

# SEC 15 T5N R29E WM UMATILLA COUNTY

# 5N 29 15

## SCALE 1" = 400'

See Map 5N 29



See Map 5N 29

See Map 5N 29

Revised 4/1/2026

See Map 5N 29 22

# 5N 29 15