

AGENDA ITEM FOR ADMINISTRATIVE MEETING

() Discussion only
(X) Action

FROM (DEPT/ DIVISION): Stephen Craigen, Elections/Records

cc

PROGRAM: Elections

SUBJECT: New Election Office Printer

<p>Approval is sought to purchase a new office printer for Elections. This printer purchase is using funds drawn from a \$50,000 grant that the County was awarded August 2024 to help rural counties with election related expenses. There is only one manufacturer of this type of printer that meets the specifications for the department.</p>	<p>() <u>ACTION REQUESTED:</u> Approve payable to Kelley Create in the amount of \$20,084.19 for the purchase of printer</p>
--	---

ATTACHMENTS: Sales Agreement; Printer Information

Date: (9-11-2024) Submitted By: (Stephen Craigen)

*****For Internal Use Only*****

Checkoffs:

- () Dept. Head (copy)
- () Fiscal
- () Legal (copy)
- () (Other - List)

To be notified of Meeting: Dan Lonai

Needed at Meeting:

Scheduled for meeting on: September 18, 2024

Action taken:

Follow-up:



TERMS AND CONDITIONS

This is not a sale on approval or trial basis and, unless otherwise stipulated, payment for goods and equipment shall be made upon delivery. Title to all goods and equipment shall remain with Seller until such time as the purchase price thereof shall have been paid in full. If Buyer neglects or refuses to pay the full purchase price when due, Seller may retake possession of said equipment and supplies. Buyer agrees to pay Seller's reasonable attorneys' fees in any collection, action, suit or appeal arising from Buyer's default thereunder. This agreement shall not be amended or modified unless set forth in writing and executed by both parties. Buyer signature indicates Buyer has read and agreed to these terms. THIS IS A BINDING ORDER, not subject to cancellation.

In the event that this sale is contingent upon approval of financing for Buyer, it is understood and agreed the Buyer will obtain their own financing not through Seller. Until such time as financing is approved, title shall remain with Seller. If financing has not been approved within thirty (30) days from the date of this agreement, all rights of the Buyer to the equipment shall cease, and the equipment shall be immediately returned to the Seller in good order and condition. If the Buyer fails to return the equipment, Seller may take the equipment into his possession, and for the purpose may enter the premises of the Buyer and remove the equipment, in which event Buyer waives any trespass or claim arising from such removal.

Seller shall not be liable to Buyer or any other person for any loss, damage, or expense of any kind or for direct or consequential damage relative to, arising from, or caused directly or indirectly, by equipment or any supplies or accessories or the use thereof, or deficiency, defect, or inadequacy thereof, or any delay in delivery or installation thereof.

This agreement may not be assigned or transferred by customer without the prior written consent of Seller.

This agreement shall be governed or construed in accordance with the laws of the State of Washington and exclusive venue of any action arising out of this agreement shall be in King County, Washington.

EQUIPMENT WARRANTIES

KELLEY CREATE warrants all new equipment in this order for 90 days from installation. Warranty covers labor and parts to correct defects in materials and workmanship at no charge to the customer. This warranty does not extend to the replacement of supply items or consumable parts in the equipment within the manufacturer's recommendations.

Any statements made by Kelley Create salesperson(s) about these products do not constitute warranties and shall not be relied on by customer in deciding whether to purchase these goods or equipment.

KELLEY CREATE MAINTENANCE AND PERFORMANCE GUARANTEE

Performance Guarantee - If your equipment is covered by a continuous Kelley Create maintenance agreement and is out of service for more than two (2) consecutive business days after notifying Kelley Create or requires off-site service, a loaner copier or facsimile will be provided by Kelley Create at no additional charge.

Equipment Training Guarantee - Kelley Create will provide initial training plus any follow-up training needed by appointment at no additional charge.

Solution Sales & Software/Connectivity Guarantee - Kelley Create will provide initial installation and training. After 30 days, all additional training will be provided and charged on an hourly basis.

Service Cost - Kelley Create guarantees that the cost of your maintenance agreement will not increase more than 18% per year, as long as you continue to be the original owner of this equipment.

Service Response Guarantee - Our Service Representative will arrive at your door within the guaranteed four (4) hour average response time over a one (1) year period.

DIGITAL MULTI-MEDIA PRESS

XANTÉ

EN/PRESS



WITH THE
ENTERPRISE
 HIGH SPEED FEED SYSTEM

+ PlateMaker 8

+ Includes
iQueue XII
 Simply Brilliant Workflow



INTRODUCING!
 ALL NEW
ENTERPRISE-SL
 COMPACT HIGH SPEED FEEDER



US Pat. No. 8939274 B1

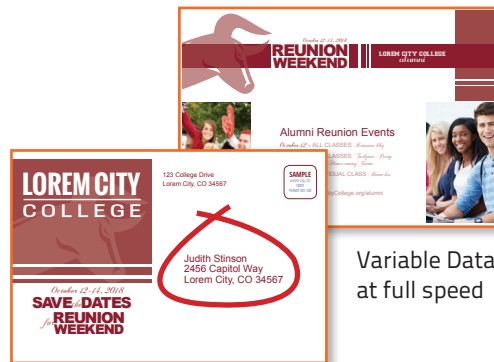
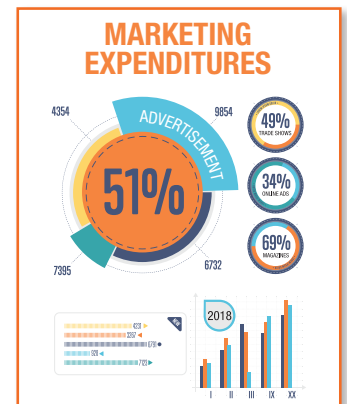
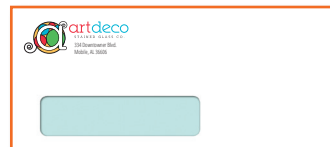
Reliable. Profitable. Easy.

The En/Press Digital Multi-Media Press with the patented Enterprise High Speed Feed System or the new Enterprise-SL Feeder offers users an affordable way to go digital and meet the demand for fast, full-color printing. Enterprise's groundbreaking design features a straight multi-speed feed path for a faster and smoother delivery compared to other feed methods. The complete digital solution is driven by iQueue Simply Brilliant Workflow that offers new file editing options, new variable data manager, advanced color correction tools and so much more.

Improve In-House Productivity

En/Press Digital Multi-Media Print Systems allow you to do more for your customers, in-house

- Allows you to print on a wider variety of media and in a wider range of sheet sizes.
- Dramatically improved print speeds with a standard 320 GB Hard Disk Drive (HDD).
- Up to 4,000 full color envelopes per hour
- Features a lower cost per sheet, so you reduce production cost, while you increase profit margins.
- Run full color jobs including variable data in one pass.
- iQueue Simply Brilliant Workflow automates prepress production and provides critical color adjustments.



Variable Data at full speed



Label stocks

Full color sheets, envelopes and cards

Astonishing Full-Color Results

The En/Press Digital Series features a multi-bit print engine that delivers outstanding color and print quality your customers expect

- Resolutions up to 4800 for exceptional sharpness, clarity and color quality.
- Edit CMYK Colors and Match Critical Spot Colors using iQueue Simply Brilliant Workflow.
- New HD toner offers a wider color gamut. The smaller particles enable the En/Press Digital Color Series to capture subtle changes in color and tone.
- Output is waterproof and laser safe.

More Media / Feed Choices

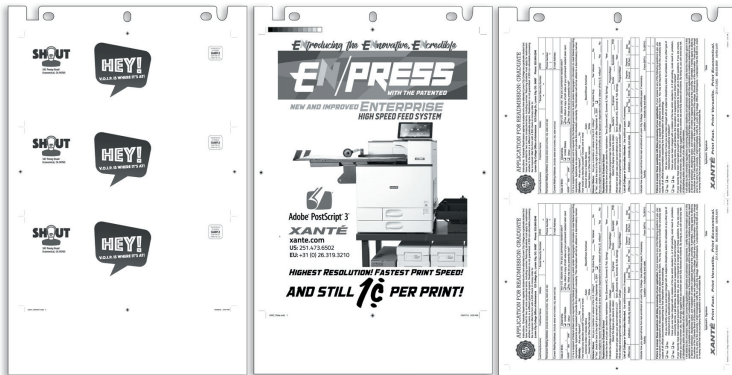
Outstanding media flexibility allows you to offer your customers more and helps eliminate costly outsourcing

- Prints on a variety of stocks including: Uncoated, coated, NCR, card stocks, textured stocks, label stocks and envelopes (4 Bar, Monarch, standard #10, window ** and larger).
- The En/Press offers multiple feed options including the patented Enterprise High Speed Feeder, the new Enterprise-SL Compact High Speed Feeder, two standard feed trays and an optional large capacity feed tray.
- Print oversized sheets / banners up to 13" (330 mm) x 49.6" (1260 mm) - manual feed.

Computer-to-Plate



Xante is pleased to announce a revolutionary advancement in Computer-to-plate (CTP) printing technology. The En/Press Revolutionary Digital Multi-Media Press with PlateMaker 8 Inside is a brand new polyester CTP system. Specifically designed for small commercial printers and print shops, this solution is low cost, high quality, and chemical free. The best part is that it's all contained WITHIN the En/Press which is already the best way to print your envelopes, NCR forms, stationery, invitations, announcements and more!



PlateMaker 8 Specifications

Myriad 2 Plates	Available in the following sizes: 10" x 15", 10" x 15½", 10" x 16½", 11" x 18", 11" x 18½", 11¾" x 18½", 11¾" x 19¾", 11¾" x 19¾", 12" x 18", 12" x 19¾", 12" x 19¾", 12" x 25", 13" x 19¾", 13" x 19¾"
340mm Option	13¾" x 19¾" (340mm x 505mm)
Media Weights	4 mil plates - Plate Auto Loader
Noise Level	Printing - less than 49.5 dB; Standby - less than 35 dB
Printer Language	Adobe PostScript 3
Typefaces	136 resident PostScript Typefaces; TrueType® 42 font rasterizer; Types 1/3/4/5/6 PostScript download support
Interface	Simultaneously active - 10/100BaseT Ethernet® (EtherTalk®, TCP/IP, LPR, IPP)

Customize with the Feeder System that works for your needs. (no feeder, Enterprise-SL, or the complete Enterprise Feed System)

Make it fit your shop and your needs:

You may choose to add on our patented Enterprise High Speed Feed System and take full advantage of the En/Press®. Available in two sizes, this straight-line path, dual-speed feed system gives you a distinct advantage in a competitive industry.



- **THE BEST envelope feed system IN THE WORLD**
- Load up to 1,000 #10 envelopes and walk away
- Quick adjust guides for faster media changes



- **NEW COMPACT DESIGN**
28.75" x 11.5" x 22.25"
- Load up to 500 #10 Envelopes
- Media from 3.5" x 3.5" up to 13" x 49"
- Load media on-the-go



EN/PRESS



ENGINE SPECIFICATIONS

Configuration	Desktop
Technology	Laser-beam scanning & electrophotographic printing with dual component toner development, 4-drum tandem method, output water proof and laser safe
Printing Speed	Color 60 ppm / Black & White 60 ppm Except when feeding from the bypass tray
Warm-Up Time	22 seconds or less
First Print Speed	8 seconds or less
Duplex Print Speed	Near 100% productivity for all paper sizes
Print Resolution	600, 1200, 2400 or 4800
Input Capacity	Standard: 2 x 550 sheets + 100-Sheet Bypass Tray
Output Capacity	Standard: 500 sheets face down
Paper Sizes	
Feed Tray 1:	Min: 8.5" W x 11" L (216 x 279 mm) Max: A4 - 8.2677" W x 11.6929" L (210mm x 297mm)
Feed Tray 2:	Min: 7.17" W x 5.83" L (182 x 148 mm) Max: SRA3 12.5" W x 17.7" L (320 x 450 mm)
Multi-Purpose Tray:	Min: 3.5" W x 3.5" L (89 x 89 mm) Max: 13" W x 49.6" L (330 x 1260 mm)
Paper Weights	
First / Second Tray:	16 - 68 lb. Bond - 18pt Cover (60 - 400 gsm)
Bypass Tray:	16 - 68 lb. Bond - 18pt Cover (60 - 400 gsm) Feed source for Labels, OHP and Envelopes
Duplex Unit:	60 - 256 gsm
Paper Types	Bond, Plain, Recycled, Preprinted, Special, Color, Letterhead, Card Stock, Glossy, Coated, Labels, OHPs and Envelopes (4 Bar, Monarch, #10, window* and larger)
Auto Duplex	Standard
Dimensions (Base Model)	23.2" W x 27" D x 28.6" H (587 x 685 x 725 mm) (Standard Configuration)
Weight (Base Model)	With consumables loaded (except toner) 187 lb. (85 kg)
Power	120-127V / 220-240V (50/60 Hz)
Operating Power	992W Consumption
Maximum Power	1.854 kw or less
Energy Saver	2.2W

PRINTER CONTROLLER (Standard)

CPU	Intel Atom Processor Bay Trail 1.75GHz
Memory	2 GB
Hard Disk Drive	320 GB HDD Standard on all models
Printer Languages	PCL 5c, PCL 6, RPCS, Adobe® PS® 3™, PDF Direct Print
Fonts	Standard: 45 PCL fonts, 13 Intl Fonts, 136 PS 3 fonts Optional: OCR and Barcode fonts available
Standard Interface	Ethernet (1000Base-T/100Base-TX/10Base-T), USB 2.0, SD Slot
Operating Systems	Windows 7 to current / Mac OS 10.7 to current

SYSTEM SPECIFICATIONS

ENTERPRISE HIGH SPEED FEEDER

Capacity	Load up to 1,000 No.10 (241 x 105mm) Envelopes
Paper Sizes	3.5" x 3.5" (89 x 89 mm) - 13" x 49.6" (305 x 1260 mm)
Paper Weights	16 - 68 lb. Bond - 18pt Cover (60 - 400 gsm)

ENTERPRISE-SL COMPACT HIGH SPEED FEEDER

Dimensions	28.75" x 11.5" x 22.25" (73cm x 29.2cm x 69.2cm)
Capacity	Load up to 500 No.10 (241 x 105mm) Envelopes
Paper Sizes	3.5" x 3.5" (89 x 89 mm) - 13" x 25.5" (305 x 648 mm)
Paper Weights	16 - 68 lb. Bond - 18pt Cover (60 - 400 gsm)

HARDWARE ACCESSORIES

Single-Tray Feed Unit

Capacity	550 sheets
Paper Sizes	3.625" x 5.125" (92 x 130 mm) - 11" x 17" (279 x 432 mm)
Paper Weights	16 - 68 lb. Bond - 14pt Cover (60 - 300 gsm)

Two-Tray Feed Unit

Capacity	1,100 sheets (550 x 2)
Paper Sizes	3.625" x 5.125" (92 x 130 mm) - 11" x 17" (279 x 432 mm)
Paper Weights	16 - 68 lb. Bond - 14pt Cover (60 - 300 gsm)

Large Capacity Feed Unit

Capacity	2,000 sheets
Paper Sizes	3.5" x 3.5" (89 x 89 mm) - 13" x 49.6" (330 x 1260 mm)
Paper Weights	16 - 68 lb. Bond / 14pt Cover (60 - 300 gsm)

SUPPLIES

Consumables	Yield	Consumables	Yield
Black Toner ¹	20,000 pages @ 5%	Yellow Toner ¹	15,000 pages @ 5%
Mag. Toner ¹	15,000 pages @ 5%	Cyan Toner ¹	15,000 pages @ 5%

Also: Drum, Waste Toner Bottle, Transfer Belt and Fuser

¹Based on a letter 5% test chart; 3 pages / job; Cyan, Magenta and Yellow (color printing only).

En/Press ships with starter toner cartridges that yield 10,000

pages for Black and 8,000 pages for each Color @ 5% coverage. Use only Xanté or Xanté approved consumables.



iQueue Simply Brilliant Workflow (Included)

Digital Color Workflow with
Advanced Color Matching
and File Management Tools

Available Features:

- Multi-Part Form Design
- Sequential Numbering
- Booklet Creation
- Universal Print Driver
- Independent CMYK Color Controls
- Patented Spot Color Matching
- Job Cost Estimator
- Full Imposition and Tiling
- Custom QR Code Generator
- Import Variable Data with Intelligent Mail barcodes*
- Automatic Creep Adjustment and more

XANTÉ

xante.com

US: 251.473.6502

EU: +31 (0) 26.319.3210



Adobe PostScript 3™

©2018 Xanté Corporation. Xanté, the Xanté logo, En/Press, iQueue and Right-On are registered trademarks of Xanté Corporation. Adobe and PostScript are registered trademarks of Adobe Systems, Inc. The Specifications listed here are subject to change without notice. *Call for details. **Laser safe window envelopes only. Patent pending technology.