

This map was prepared for Assessment & Taxation purposes only and was NOT prepared nor is it suitable for legal, engineering or surveying purposes.

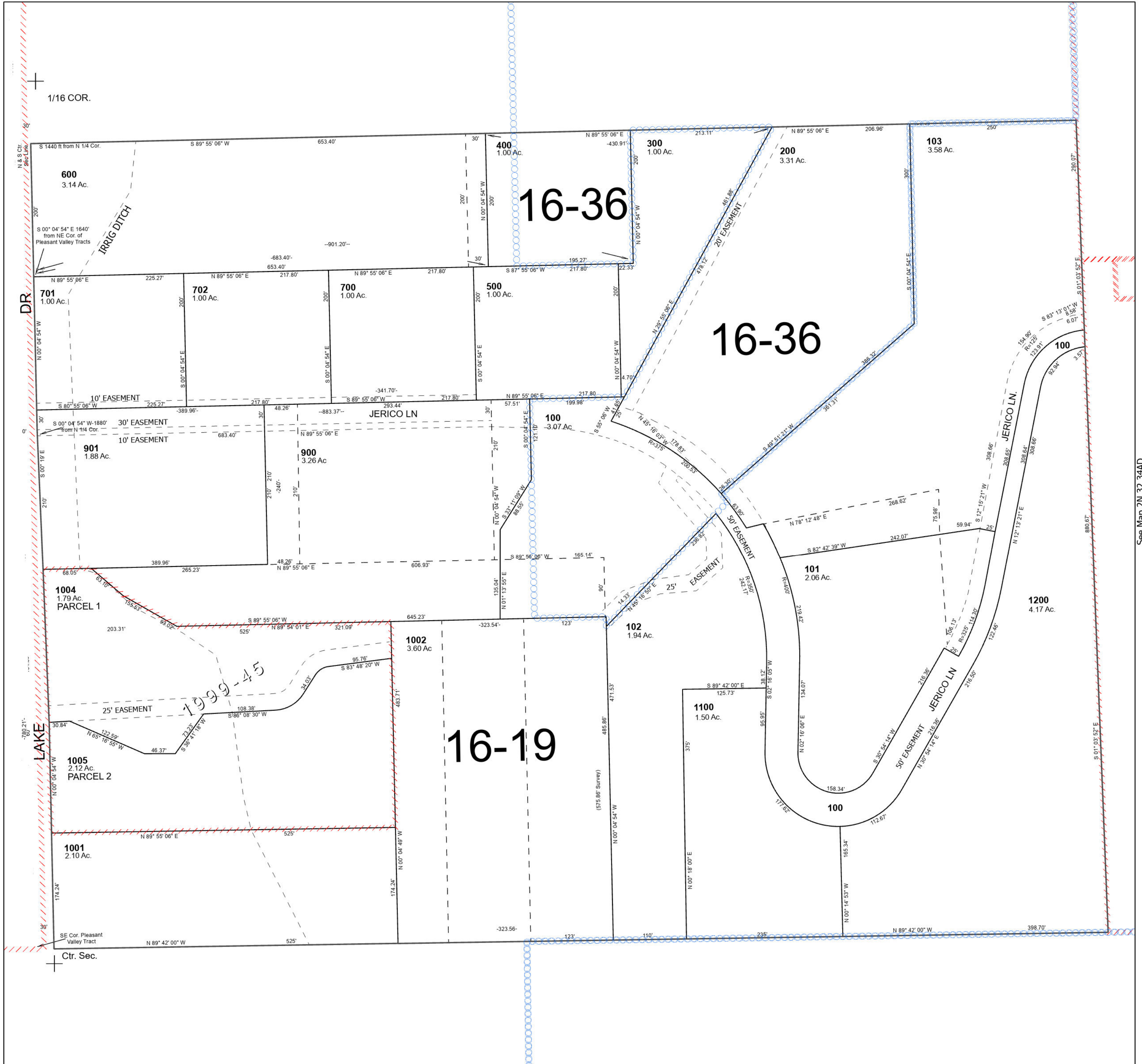
Cancelled Tax Lots

- 800
- 902
- 1003
- 1000

SW 1/4 NE 1/4 SEC 34 T2N R32E WM UMATILLA COUNTY SCALE 1" = 100'

See Map 2N 32 34AB

2N 32 34AC



See Map 2N 32 34BD

See Map 2N 32 34AD