

This map was prepared for Assessment & Taxation purposes only and was NOT prepared nor is it suitable for legal, engineering or surveying purposes.

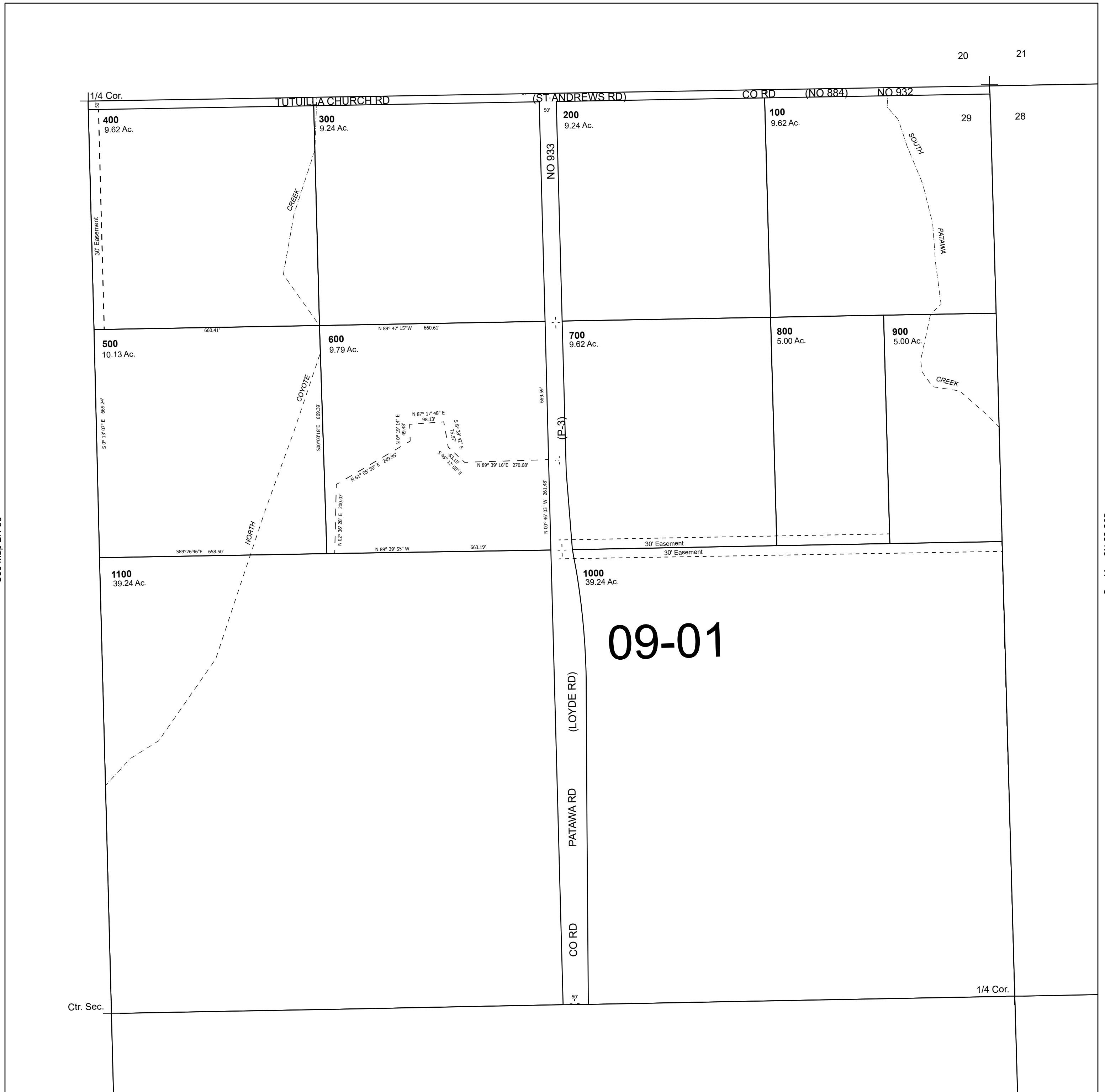
Cancelled Tax Lots

NE 1/4 SEC 29 T2N R33E WM UMATILLA COUNTY

2N 33 29A

SCALE 1" = 200'

See Map 2N 33



See Map 2N 33

See Map 2N 33 28B

Revised 12/2/2024

See Map 2N 33 29D

2N 33 29A