

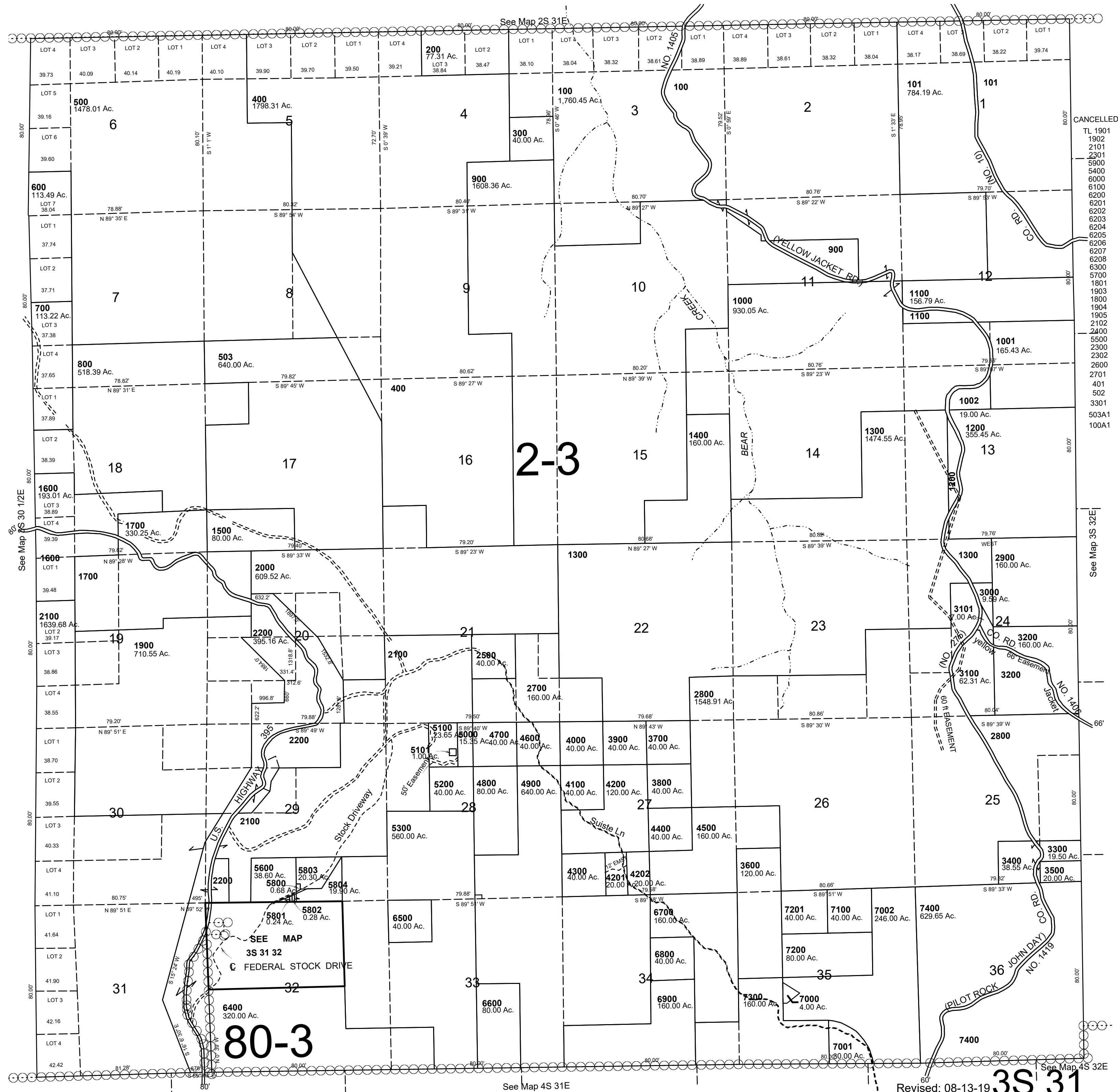
This map was prepared for Assessment & Taxation purposes only and was NOT prepared nor is it suitable for legal, engineering or surveying purposes.

T3S R31E WM UMATILLA COUNTY

1"=2000'

AERIAL PHOTO NO NZ 9P 60-64 & 10P 12-17

3S 31



Revised: 08-13-19 **3S 31**