

This map was prepared for Assessment & Taxation purposes only and was NOT prepared nor is it suitable for legal, engineering or surveying purposes.

# T3S R32E WM UMATILLA COUNTY

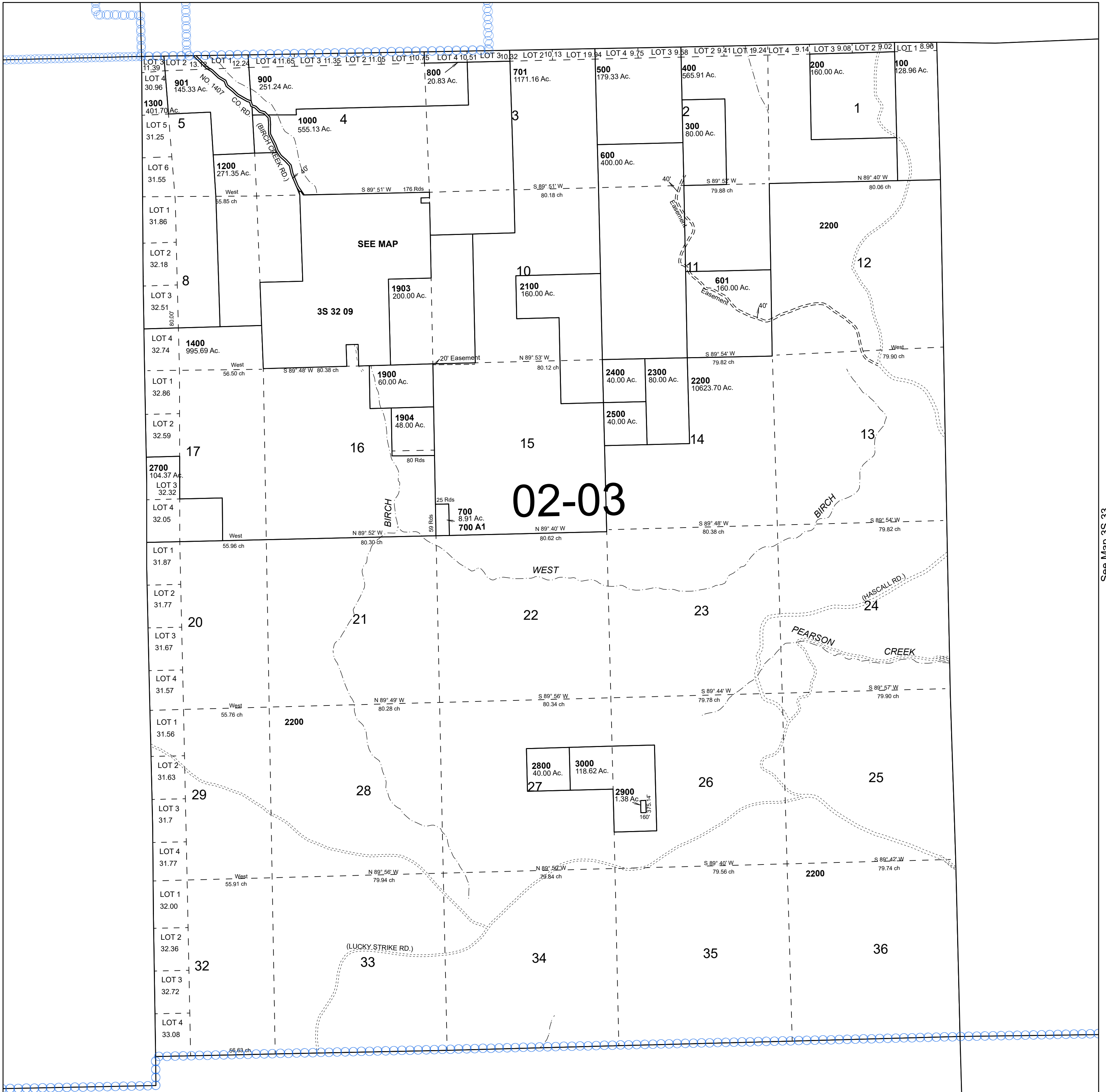
# 3S 32

Cancelled Tax Lots

1100	1800
1500	1901
1600	1902
1601	2000
1602	2600
1603	
1604	
1605	
1690	
1700	

SCALE 1" =2,000'

See Map 2S 32



See Map 3S 31

See Map 3S 33

# 3S 32