

This map was prepared for Assessment & Taxation purposes only and was NOT prepared nor is it suitable for legal, engineering or surveying purposes.

# SW 1/4 SE 1/4 SEC 11 T4N R28E WM

## UMATILLA COUNTY

SCALE 1" = 100'

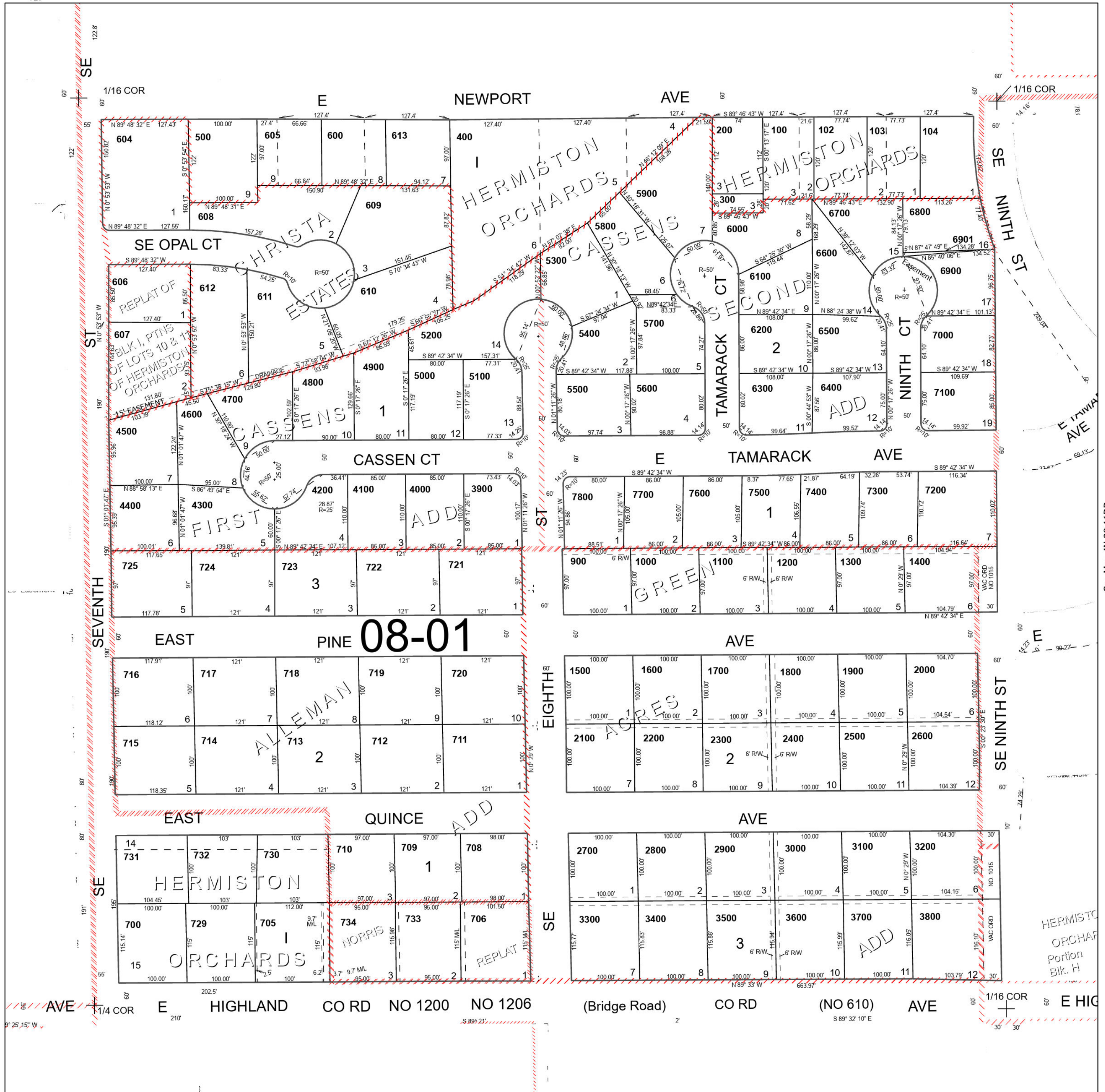
Hermiston

### 4N 28 11DC

Cancelled Tax Lots

- 101      727
- 601      728
- 602      800
- 603
- 701
- 702
- 703
- 704
- 707
- 726

See Map 4N 28 11DB



See Map 4N 28 11CD

See Map 4N 28 11DD

### 4N 28 11DC