

This map was prepared for Assessment & Taxation purposes only and was NOT prepared nor is it suitable for legal, engineering or surveying purposes.

Cancelled Tax Lots

# SW 1/4 NW 1/4 SEC 13 T4N R28E WM

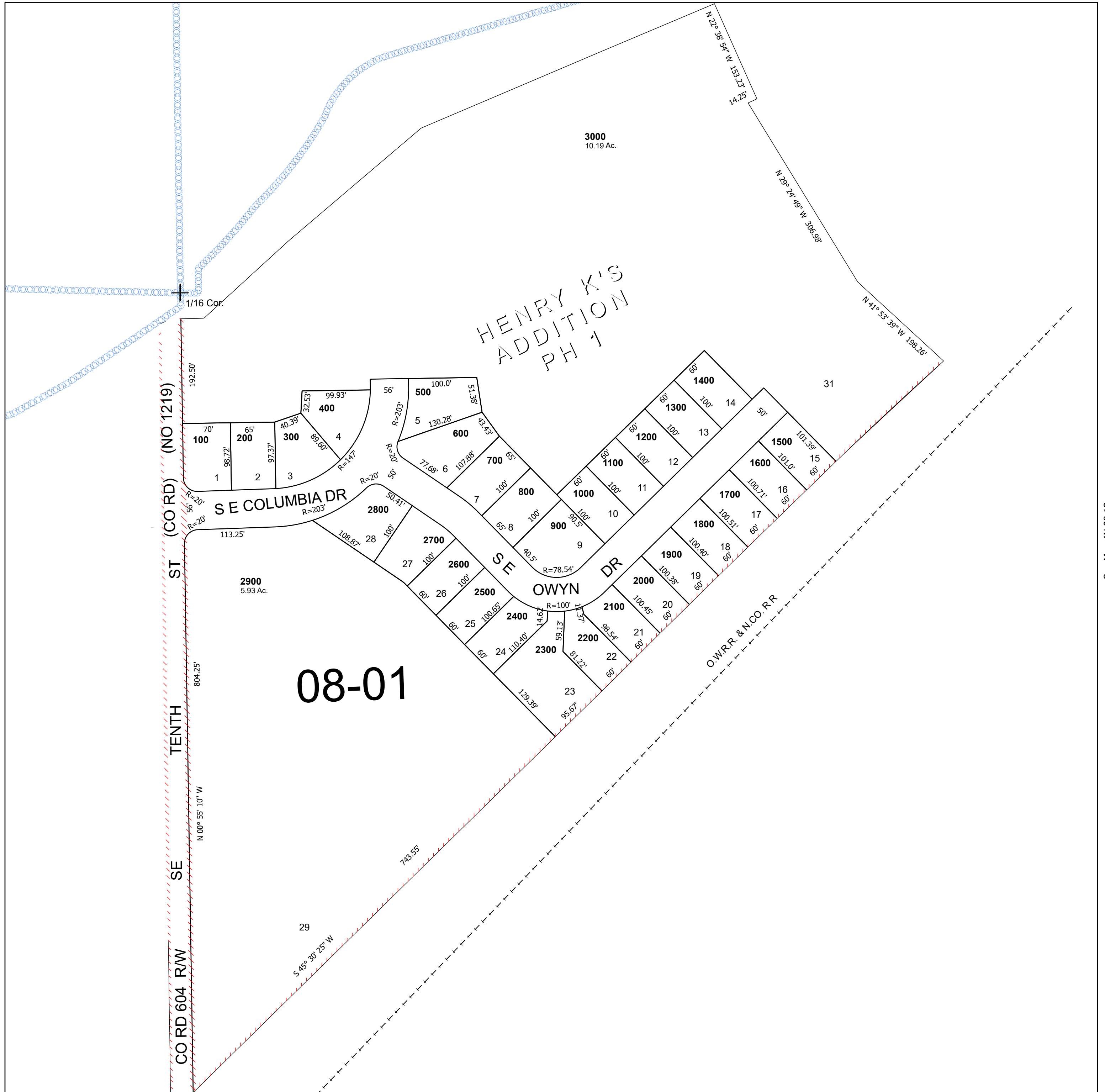
## UMATILLA COUNTY

SCALE 1" = 100'

Hermiston

### 4N 28 13BC

See Map 4N 28 13



See Map 4N 28 14AD

See Map 4N 28 13

Revised 4/15/2025

See Map 4N 28 13

### 4N 28 13BC