

# SHEET NO.1

## NW 1/4 SE 1/4 SEC 27 T5N R28E WM

# UMATILLA COUNTY

SCALE 1" = 100'

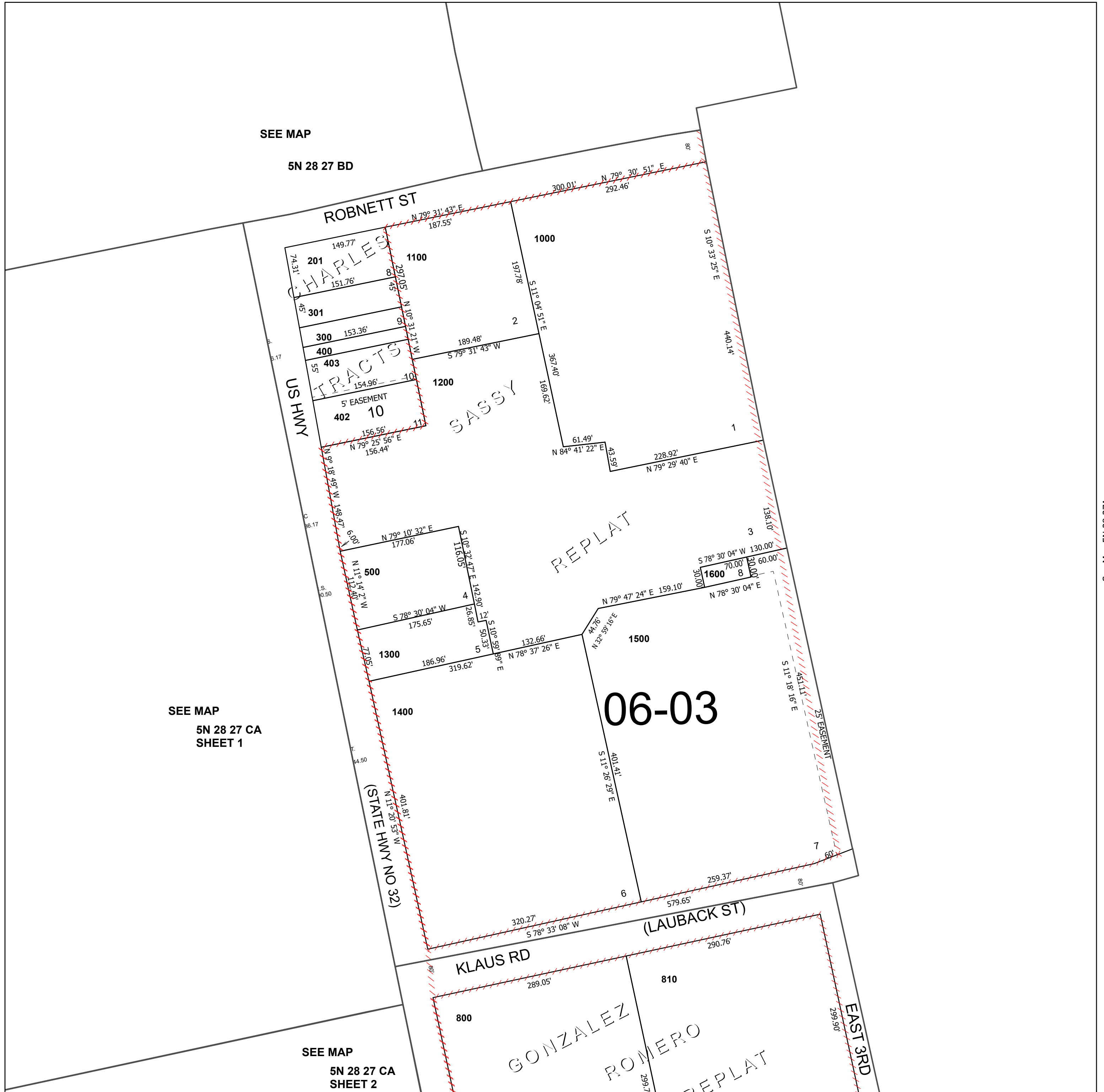
This map was prepared for Assessment & Taxation purposes only and was NOT prepared nor is it suitable for legal, engineering or surveying purposes.

Cancelled Tax Lots

- 100
- 200
- 202
- 203
- 401
- 501
- 600
- 700

See Map 5N 28 17AC

## SHEET NO.1 5N 28 27DB



See Map 5N 28 27CA

See Map 5N 28 27A

Revised 2/27/2025

See Map 5N 28 27DC

## SHEET NO.1 5N 28 27DB

# SHEET NO.2

## NW 1/4 SE 1/4 SEC 27 T5N R28E WM

# UMATILLA COUNTY

SCALE 1" = 100'

This map was prepared for Assessment & Taxation purposes only and was NOT prepared nor is it suitable for legal, engineering or surveying purposes.

Cancelled Tax Lots

- 100
- 200
- 202
- 203
- 401
- 501
- 600
- 700

See Map 5N 28 17AC

## SHEET NO.2 5N 28 27DB



See Map 5N 28 27CA

See Map 5N 28 27A