

This map was prepared for assessment purposes

# SEC 22 T3N R29E WM UMATILLA COUNTY

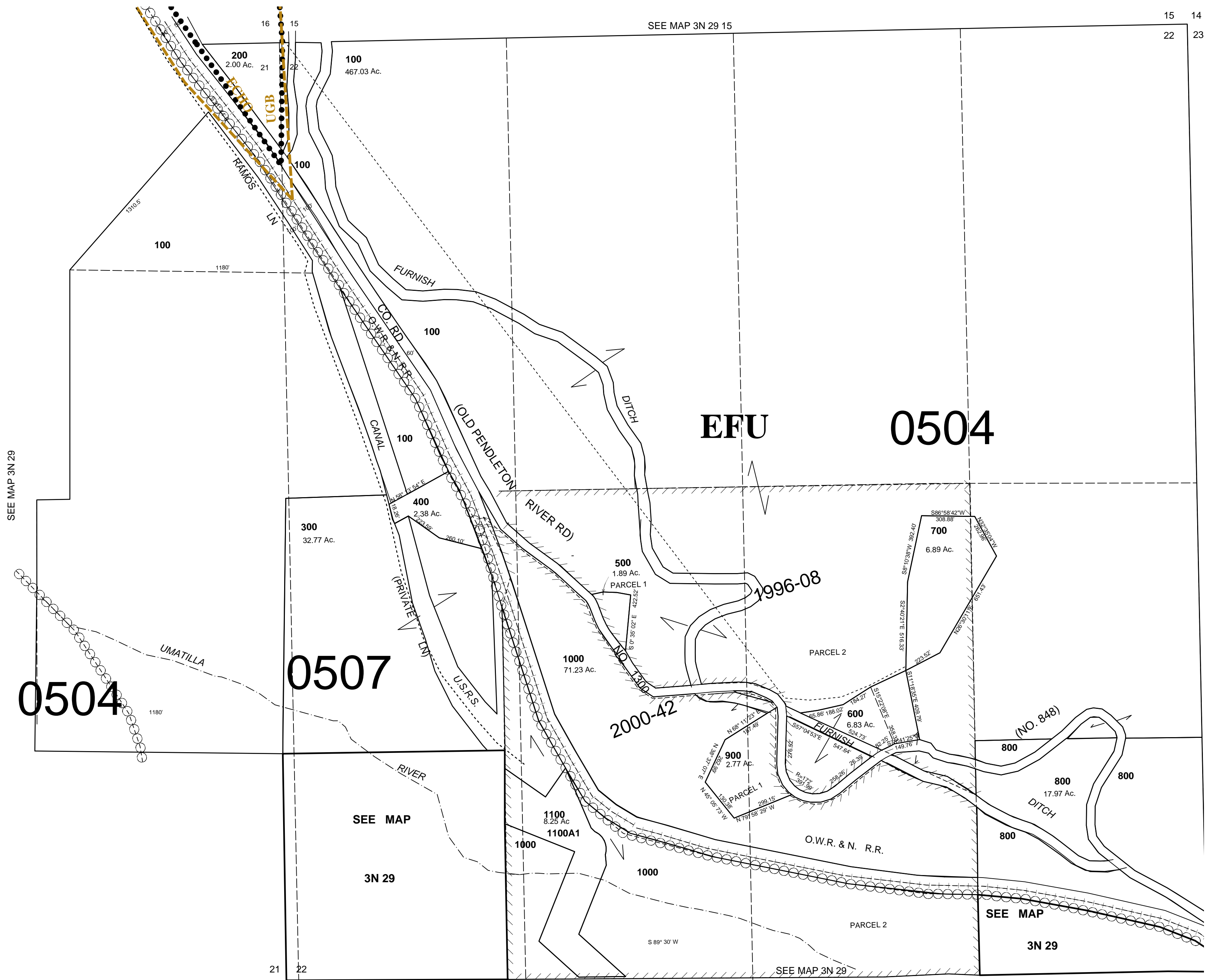
7/13/06

3N 29 22

AERIAL PHOTO NO. NZ 2P 80-86, 109-114 & 144-148

SCALE 1"=400'

See FIRM for areas subject to flooding  
All in Stage Gulch Critical Ground Water Area



3N 29 22