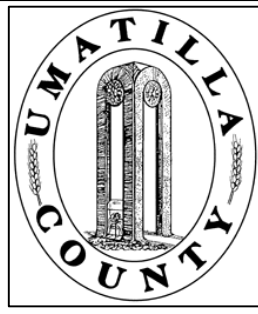
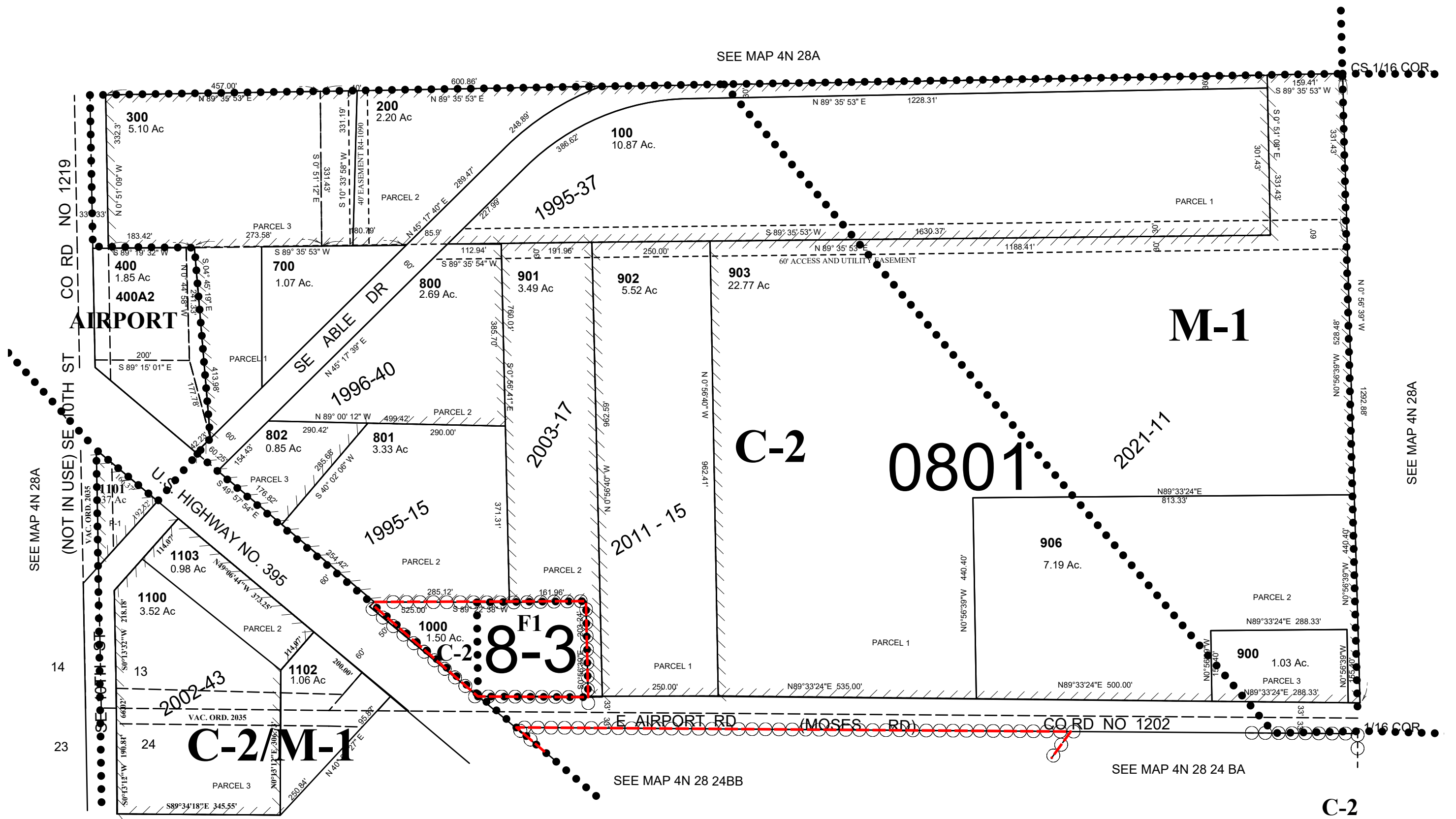


This map was prepared for Assessment purposes only.



S1/2 SW1/4 SEC 13 T4N R28E WM
UMATILLA COUNTY, OR
SCALE: 1" = 200'

4N2813C
HERMISTON CITY & UGA
ALL IN STAGE GULCH CGWATER AREA
ALL IN AH-H HORIZONTAL SURFACE



4N2813C