

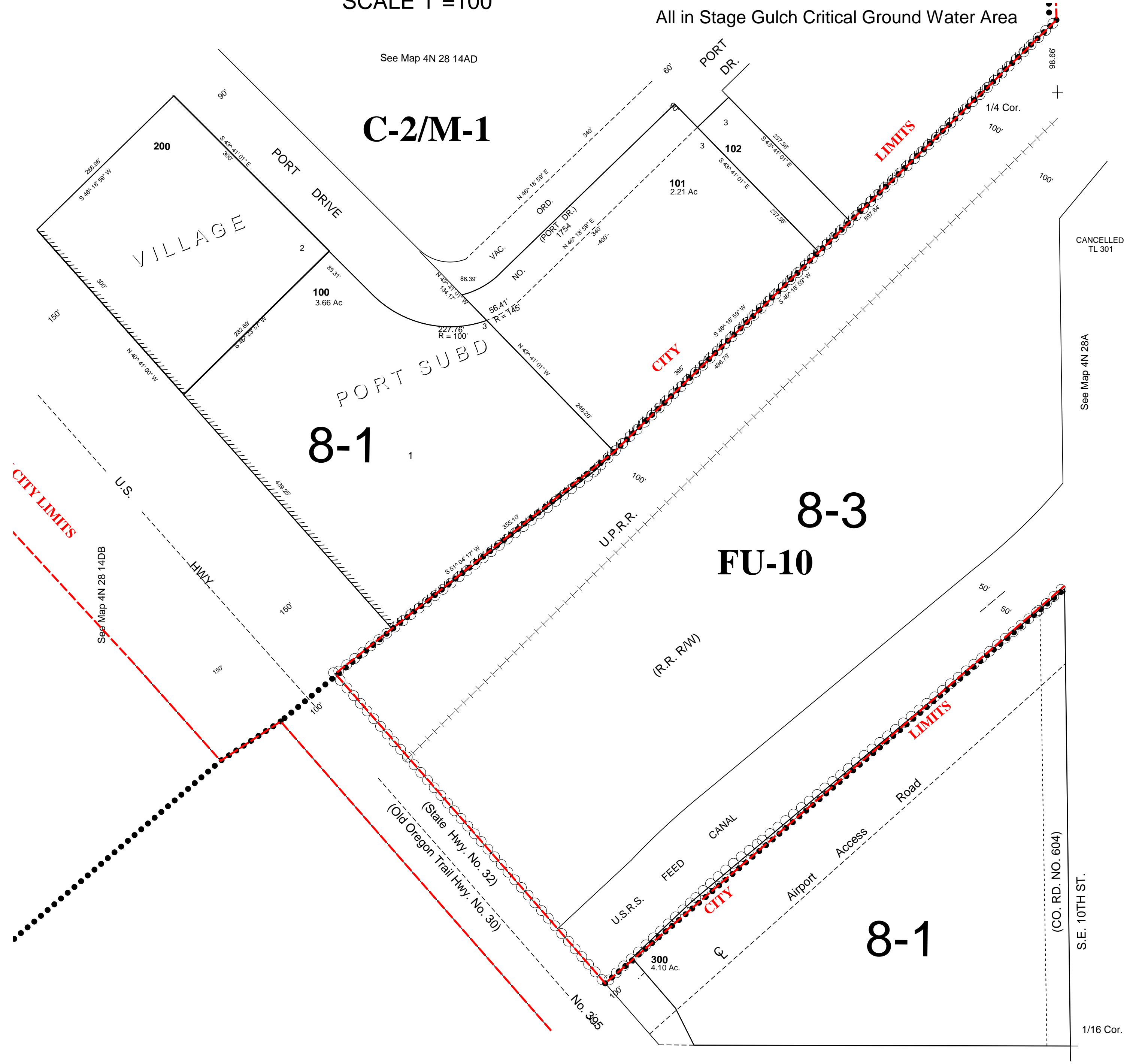
This map was prepared for assessment purposes

NE1/4 SE1/4 SEC 14 T4N R28E WM
UMATILLA COUNTY
SCALE 1"=100'

2/6/06

4N 28 14DA

AERIAL PHOTO NO. NZ IP-123
HERMISTON CITY & URBAN GROWTH AREA
All in Airport Hazard Overlay Zone



See Map 4N 28 A

4N 28 14DA