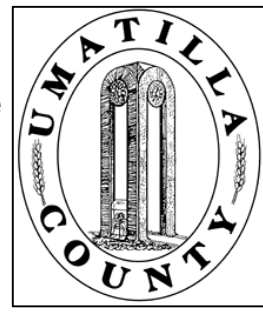


This map was prepared for Assessment & Taxation purposes only and was NOT prepared nor is it suitable for legal, engineering or surveying purposes.

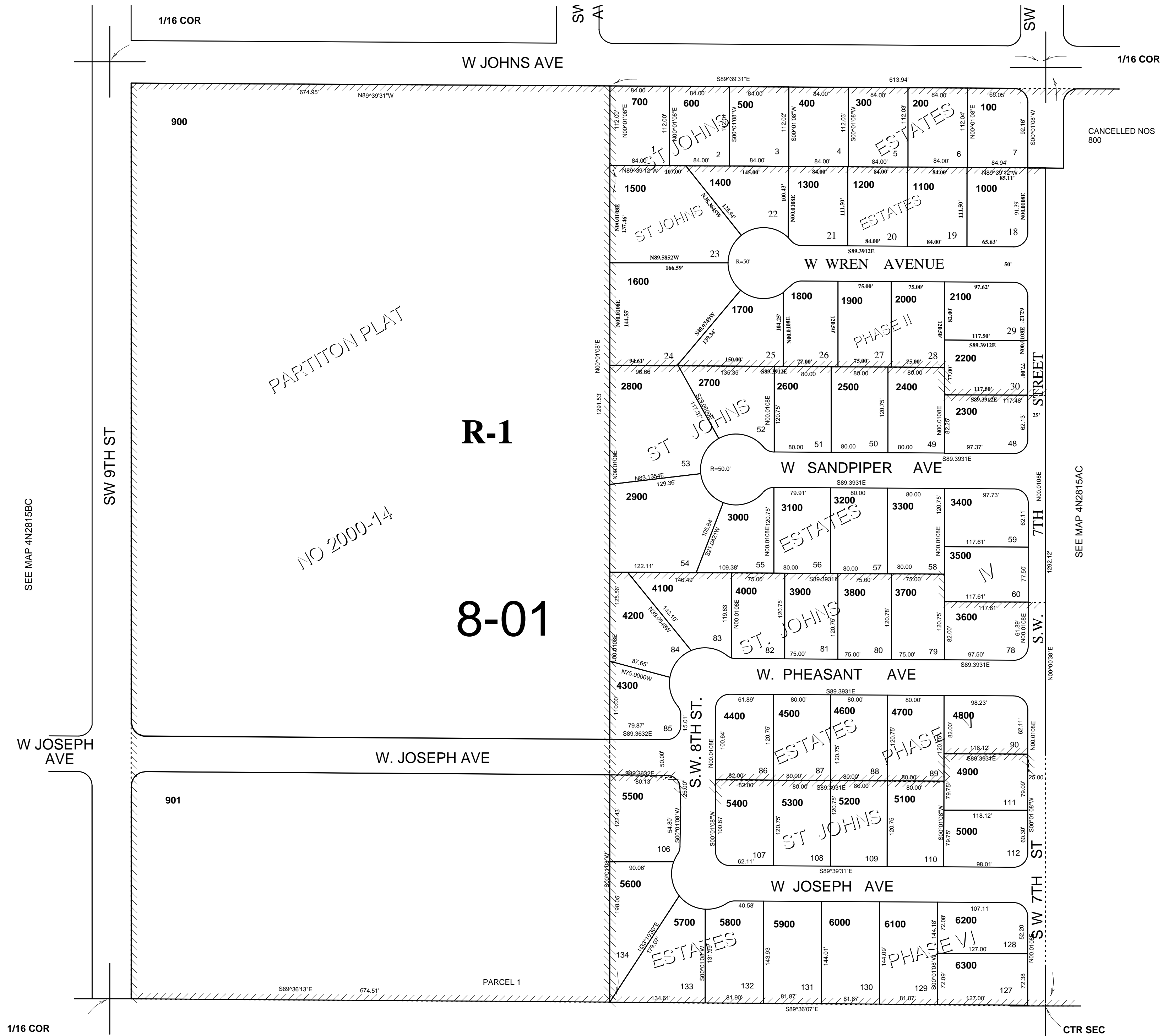


SE1/4 NW1/4 SEC 15 T4N R28E WM UMATILLA COUNTY, OR

REVISED: 11/20/08

4N2815BD
AERIAL PHOTO NO 2P 23-24
CITY OF HERMISTON

SCALE: 1" = 100'



4N2815BD