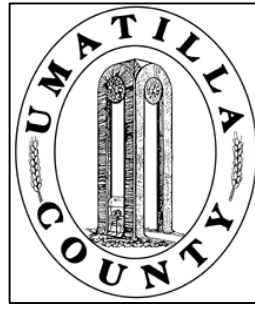


This map was prepared for Assessment purposes only.



# NE1/4 SEC 17 T4N R28E WM UMATILLA COUNTY, OR

7/17/03

## 4N2817A

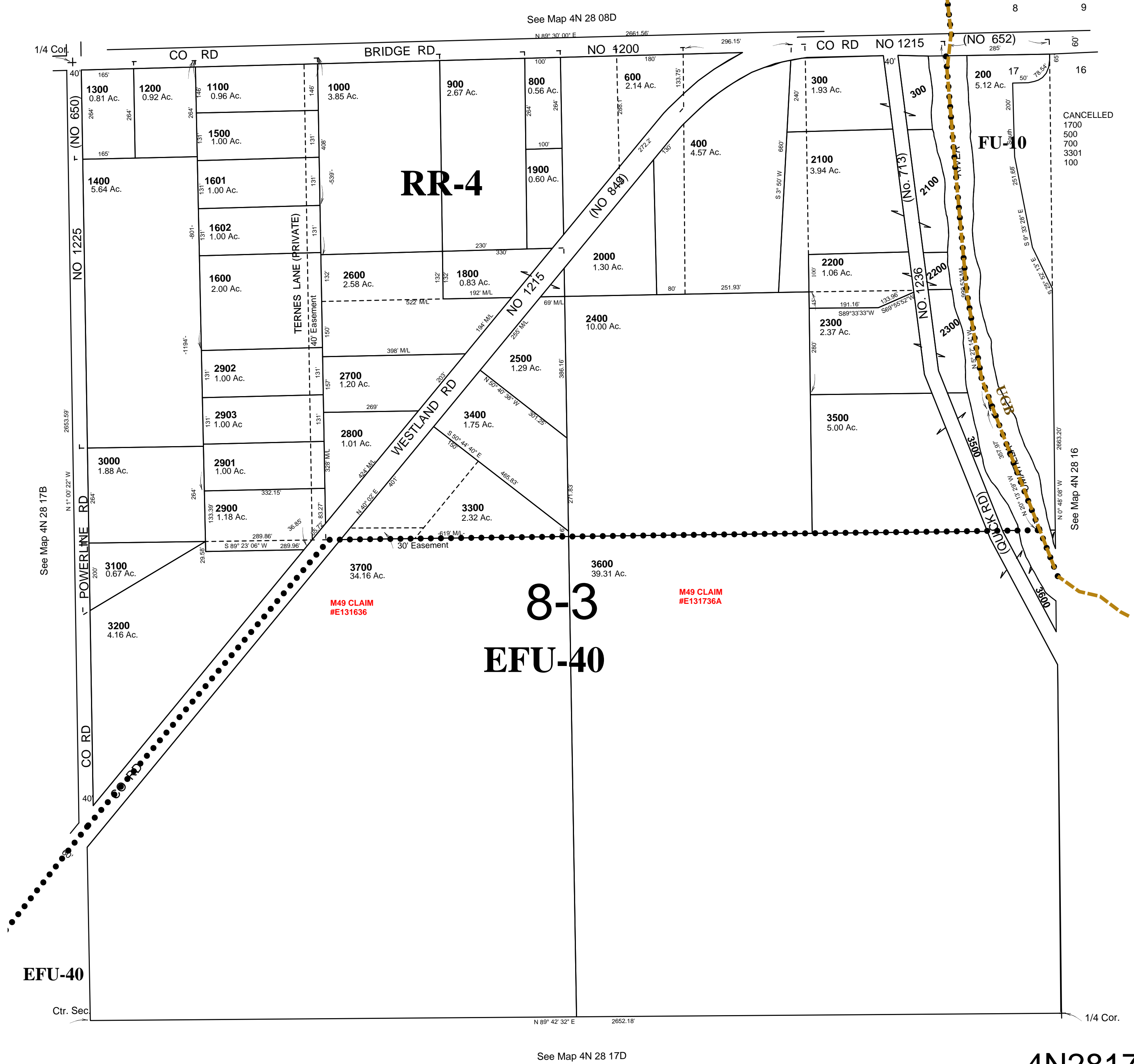
Aerial Photo No. NZ-2P-25

Hermiston Urban Growth Area

All in Critical Ground Water Areas

See FIRM for areas subject to flooding

SCALE: 1" = 200'



## 4N2817A