

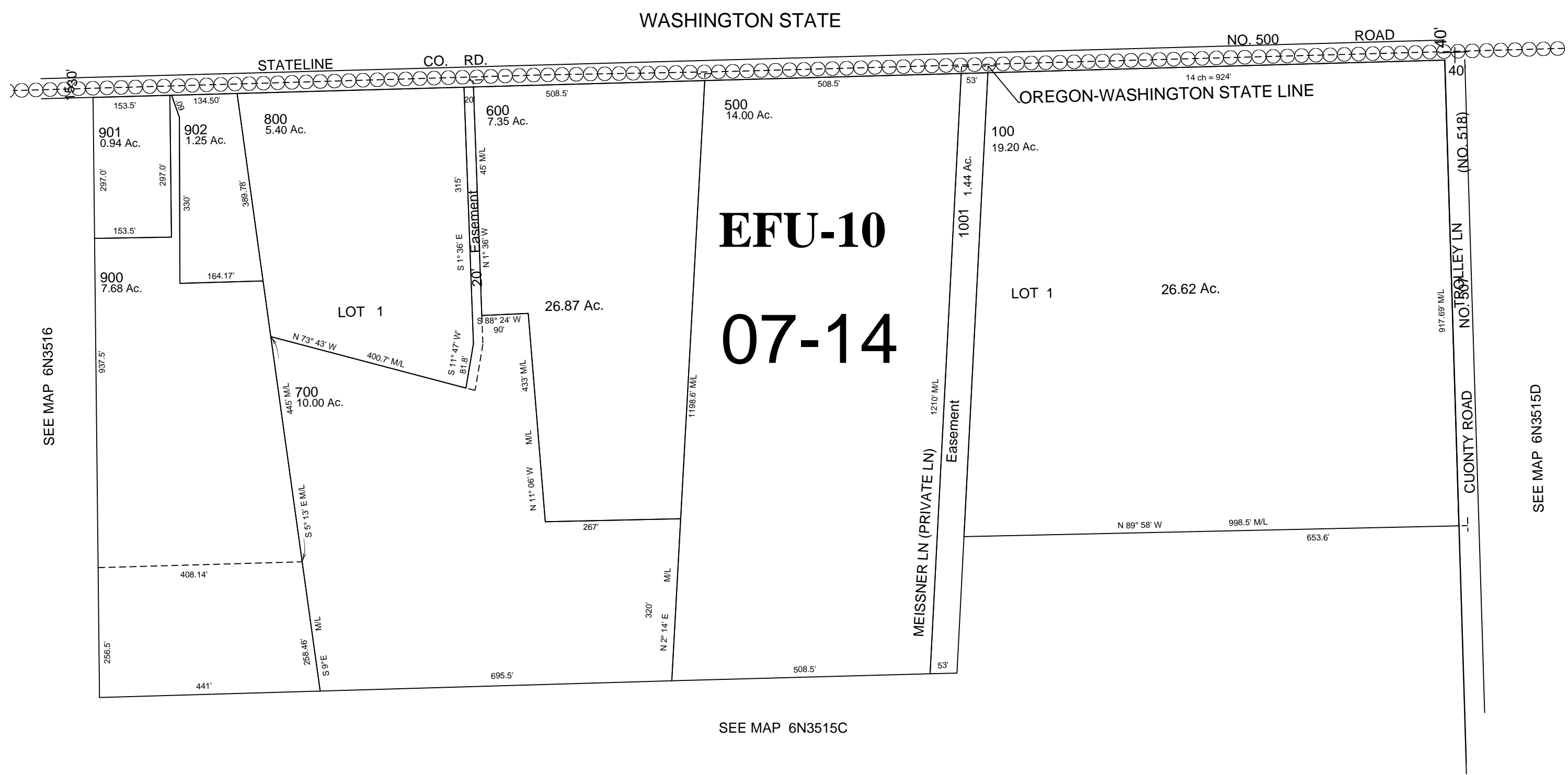
This map was prepared for Assessment & Taxation purposes only and has not been prepared or is it suitable for legal, engineering or surveying purposes.

# NW 1/4 SEC 15 T6N R35E WM UMATILLA COUNTY

## 6N3515B

Aerial Photo NZ-6P-19

SCALE 1"=200'



REVISED: 02-14-13

## 6N3515B