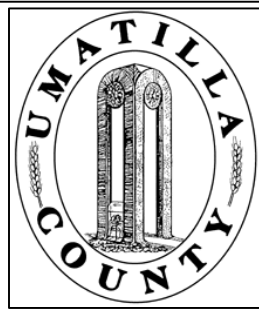


This map was prepared for Assessment purposes only.



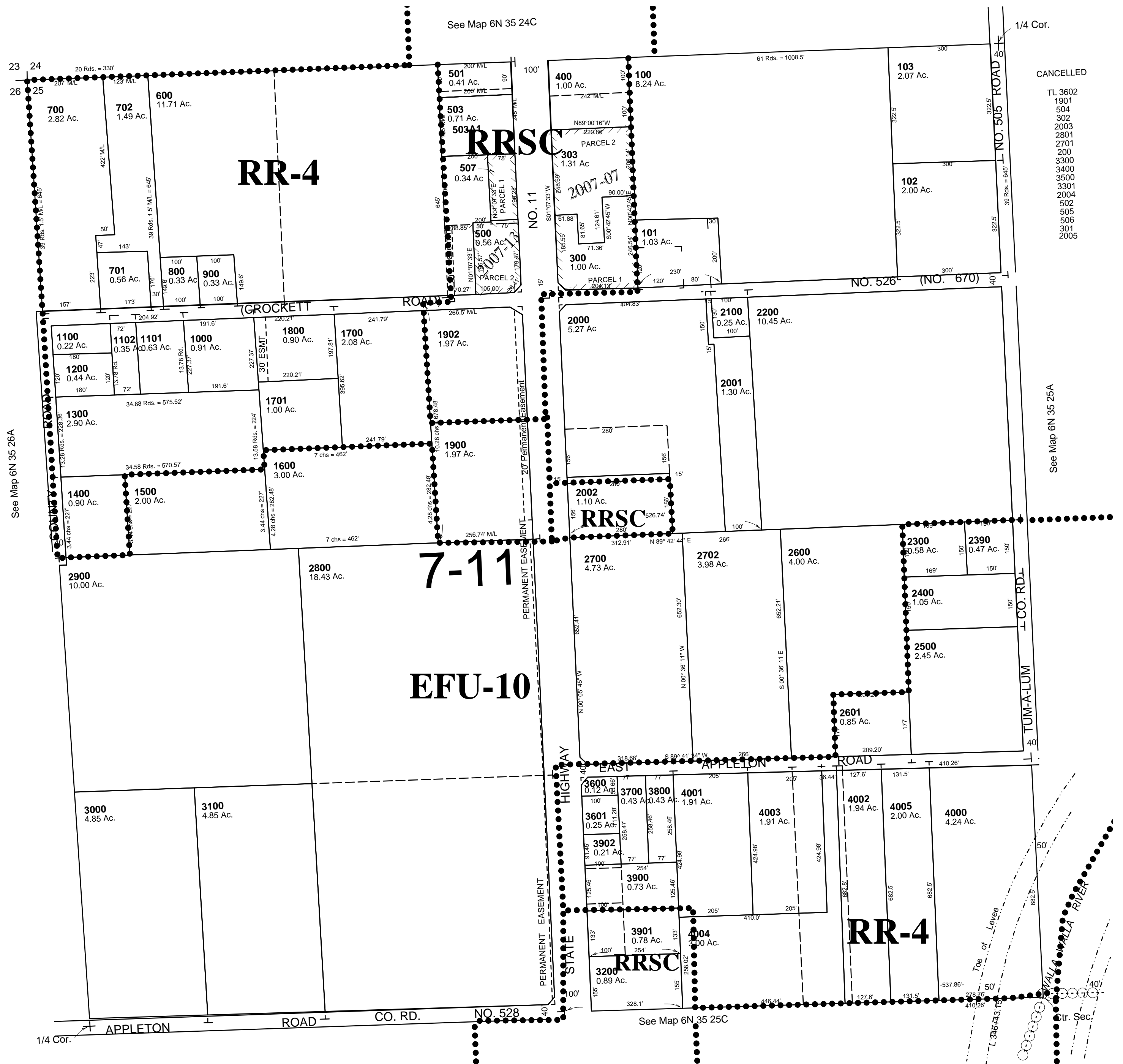
NW 1/4 SEC 25 T 6N R 35E WM  
UMATILLA COUNTY, OR

10/02/03

6N 35 25B

AERIAL PHOTO NO. NZ-6P-64

SCALE: 1" = 200'



- CANCELLED
- TL 3602
  - 1901
  - 504
  - 302
  - 2003
  - 2801
  - 2701
  - 200
  - 3300
  - 3400
  - 3500
  - 3301
  - 2004
  - 502
  - 505
  - 506
  - 301
  - 2005

See Map 6N 35 25A

See Map 6N 35 25C

6N3525B