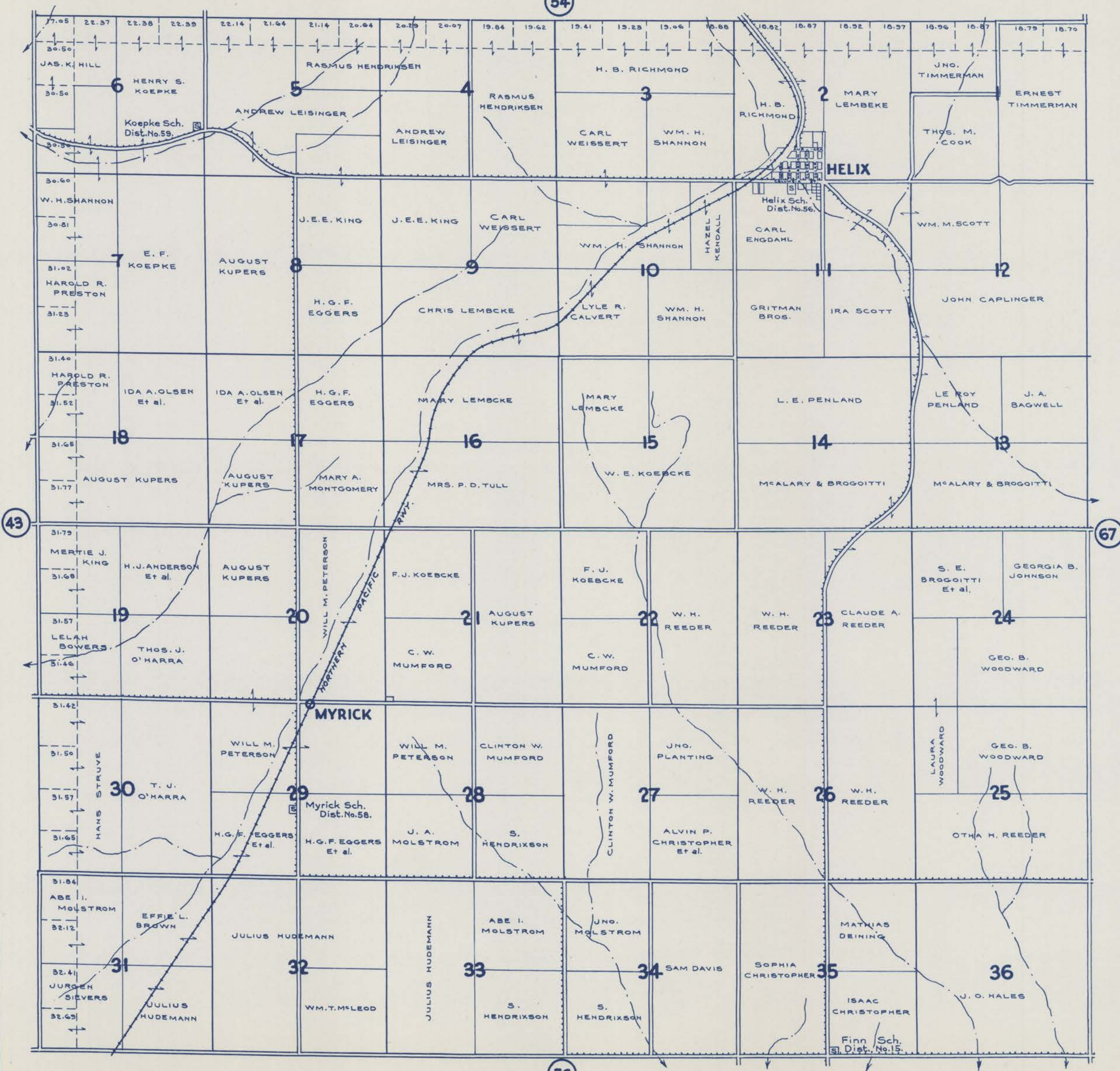


TOWNSHIP 4 N., RANGE 33 E.W.M. UMATILLA COUNTY OREGON

SCALE 2 IN. = 1 MILE
DATED 1932

CHAS. F. METSKER, CIVIL ENGINEER
215 COMMERCE BLDG., PORTLAND, ORE.
930 1/2 PACIFIC AVE., TACOMA, WASH.

54



43

67

56

- LEGEND-**
- PAVED ROADS
 - STATE HIGHWAYS
 - MARKET ROADS
 - DIRT ROADS
 - INFERIOR ROADS
 - RAILROADS
 - TRAILS
 - INTERMITTENT CREEKS
 - SCHOOLS