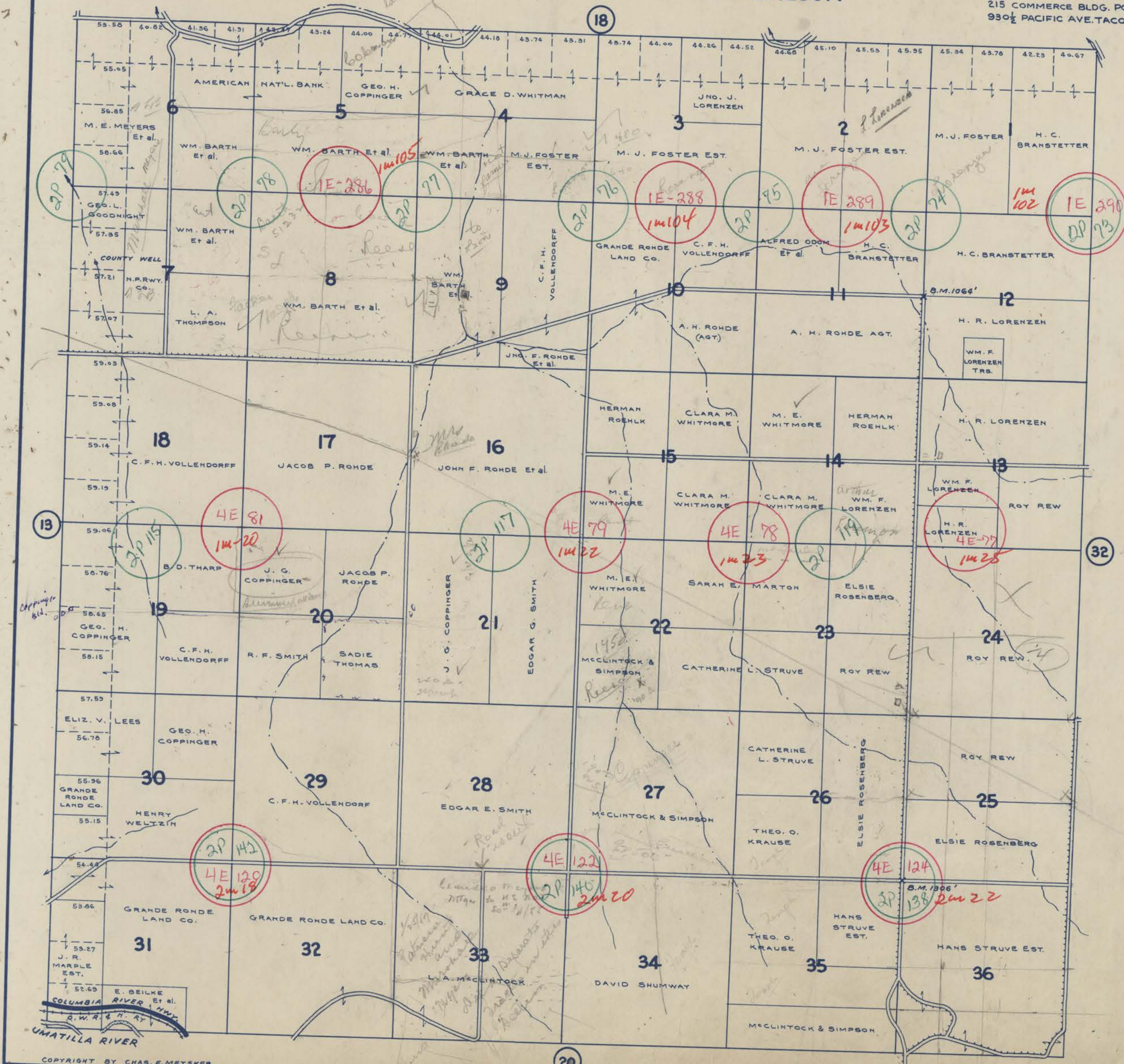


TOWNSHIP 3 N., RANGE 30 E.W.M. UMATILLA COUNTY OREGON

SCALE 2 IN. = 1 MILE
DATED 1932

CHAS. F. METSKER CIVIL ENGINEER
215 COMMERCE BLDG. PORTLAND, ORE.
930 1/2 PACIFIC AVE. TACOMA, WASH.



163
480

32

13

20

COPYRIGHT BY CHAS. F. METSKER

- LEGEND -
- PAVED ROADS
 - STATE HIGHWAYS
 - MARKET ROADS
 - DIRT ROADS
 - INFERIOR ROADS
 - RAILROADS
 - TRAILS
 - INTERMITTENT CREEKS
 - SCHOOLS