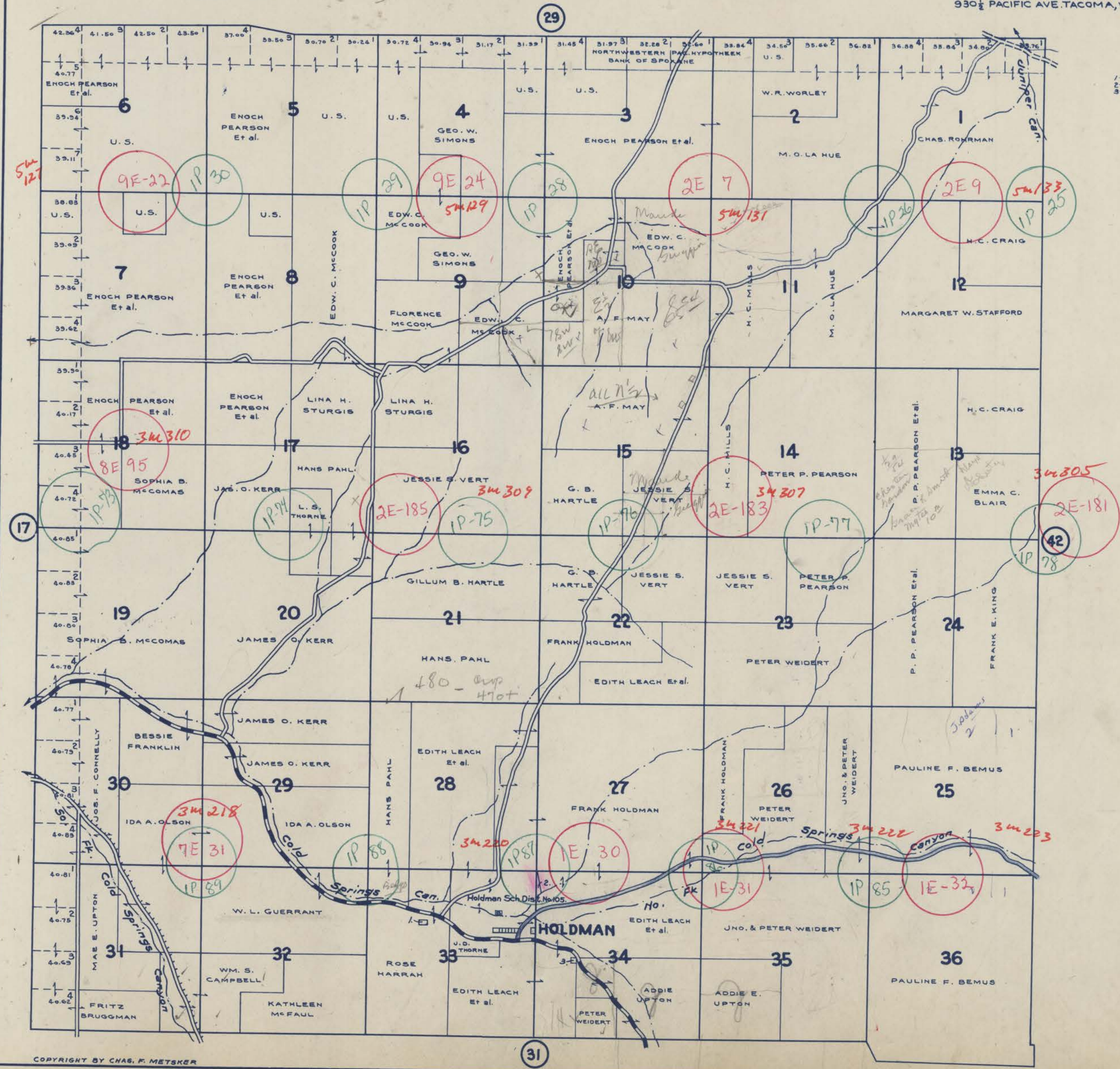


# TOWNSHIP 5 N., RANGE 31 E.W.M. UMATILLA COUNTY OREGON

SCALE 2 IN. = 1 MILE  
DATED 1932

CHAS. F. METSKER CIVIL ENGINEER  
215 COMMERCE BLDG. PORTLAND, ORE.  
930 1/2 PACIFIC AVE. TACOMA, WASH.

1-CEMETERY  
2-LUCY MONTGOMERY  
3-ESTER MAY KIMBALL



**-LEGEND-**  
 PAVED ROADS  
 STATE HIGHWAYS  
 MARKET ROADS  
 DIRT ROADS  
 INFERIOR ROADS  
 RAILROADS  
 TRAILS  
 INTERMITTENT  
 SCHOOLS