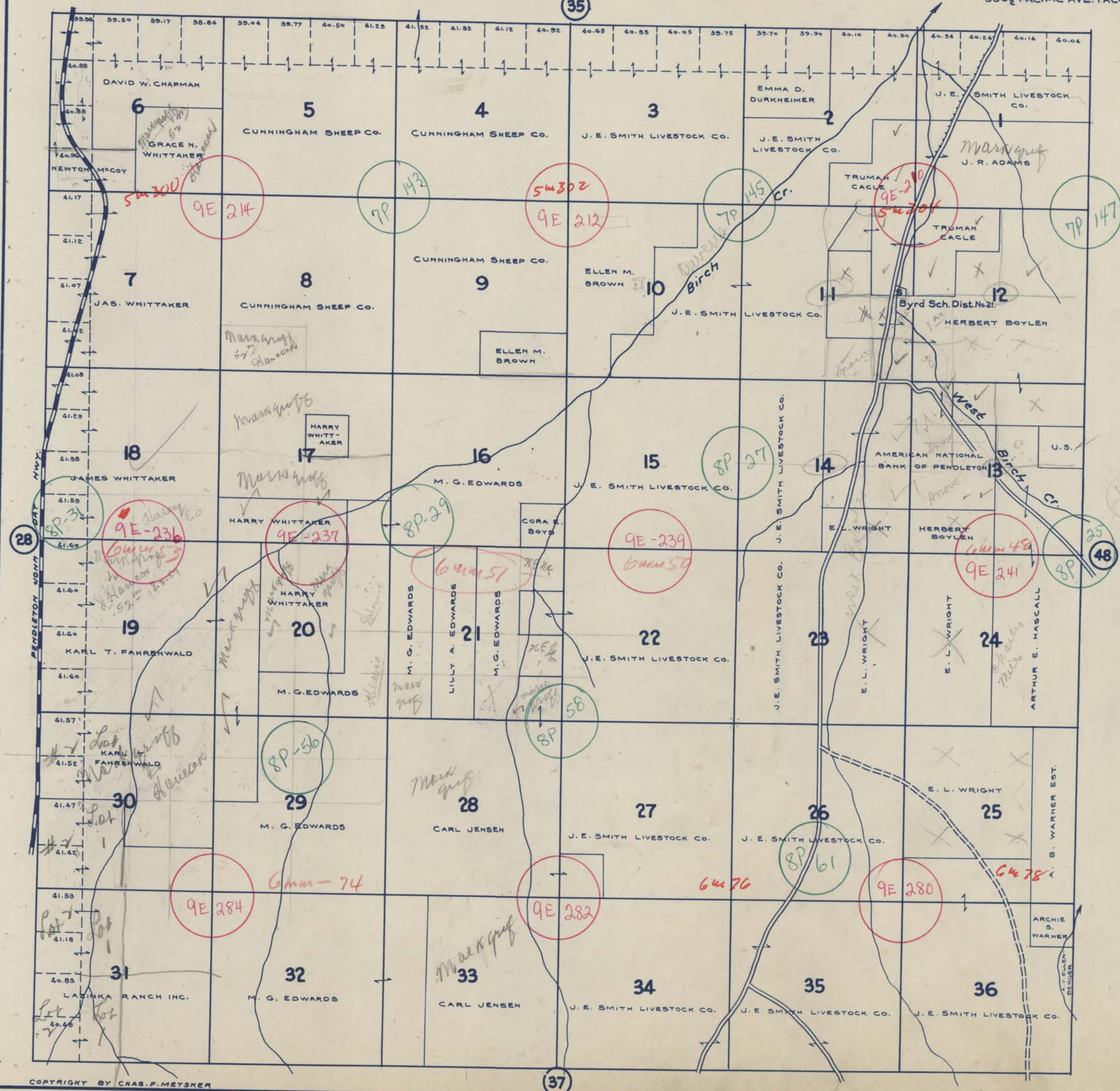


TOWNSHIP 2 S., RANGE 31 E.W.M. UMATILLA COUNTY OREGON

SCALE 2 IN. = 1 MILE
DATED 1932

CHAS. F. METSKER CIVIL ENGINEER
215 COMMERCE BLDG. PORTLAND, ORE.
930 1/2 PACIFIC AVE. TACOMA, WASH.



348 2/5

25
48
48

28

37

COPYRIGHT BY CHAS. F. METSKER

- LEGEND -

PAVED ROADS	
STATE HIGHWAYS	
MARKET ROADS	
DIRT ROADS	
INFERIOR ROADS	
RAILROADS	
TRAILS	
INTERMITTENT CREEKS	
SCHOOLS	