

# TOWNSHIP 1 N., RANGE 32 E.W.M. UMATILLA COUNTY OREGON

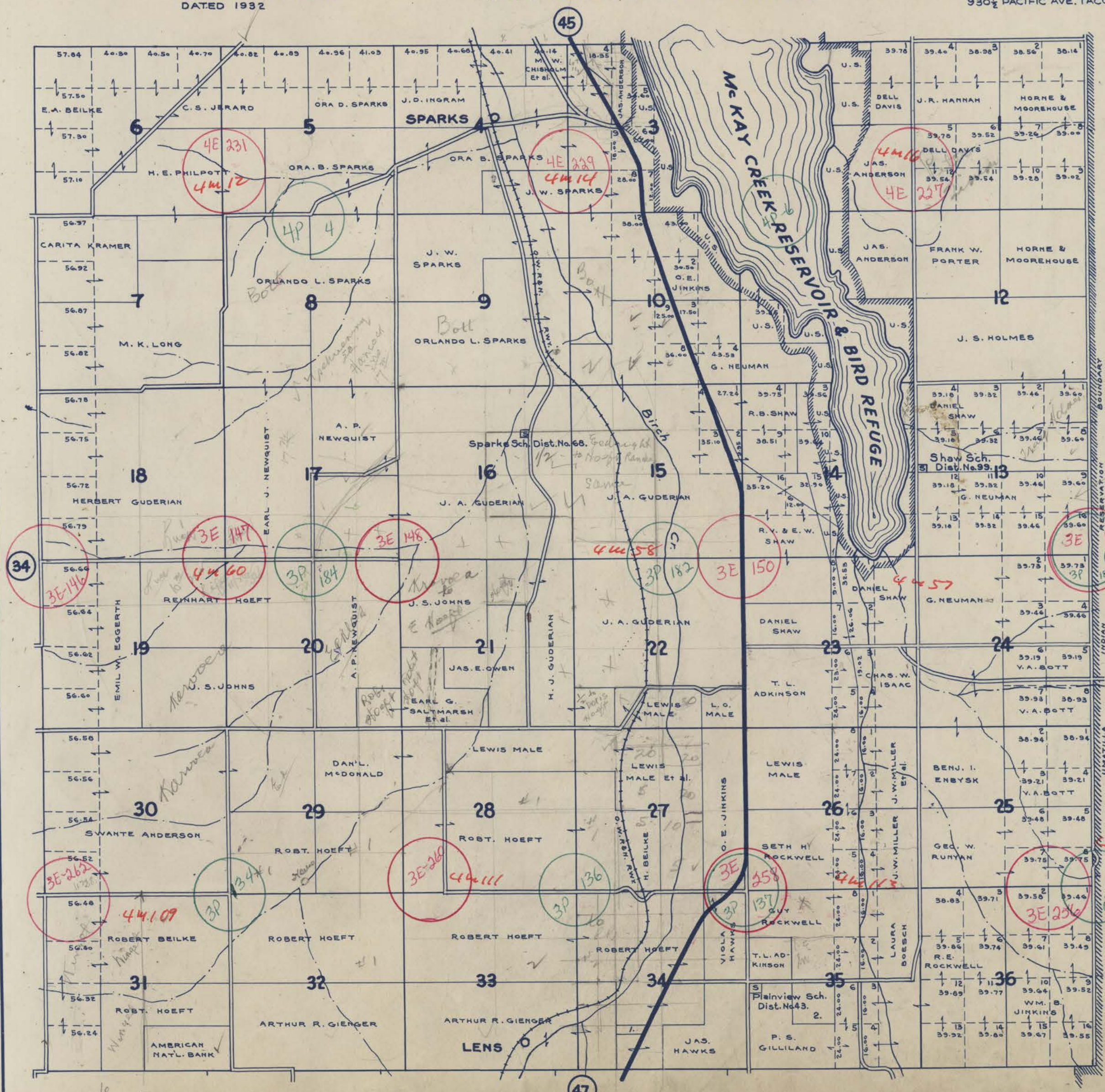
SCALE 2 IN. = 1 MILE.  
DATED 1932

CHAS. F. METSKER CIVIL ENGINEER  
215 COMMERCE BLDG. PORTLAND, ORE.  
930 1/2 PACIFIC AVE. TACOMA, WASH.

40  
1932  
7165

1- ANNA E. HAWKS  
2- R. E. ROCKWELL

1935  
40  
58.35  
50  
38.50  
146.85  
16.  
140.85



- LEGEND-**
- PAVED ROADS
  - STATE HIGHWAYS
  - MARKET ROADS
  - DIRT ROADS
  - INFERIOR ROADS
  - RAILROADS
  - TRAILS
  - INTERMITTENT CREEKS
  - SCHOOLS