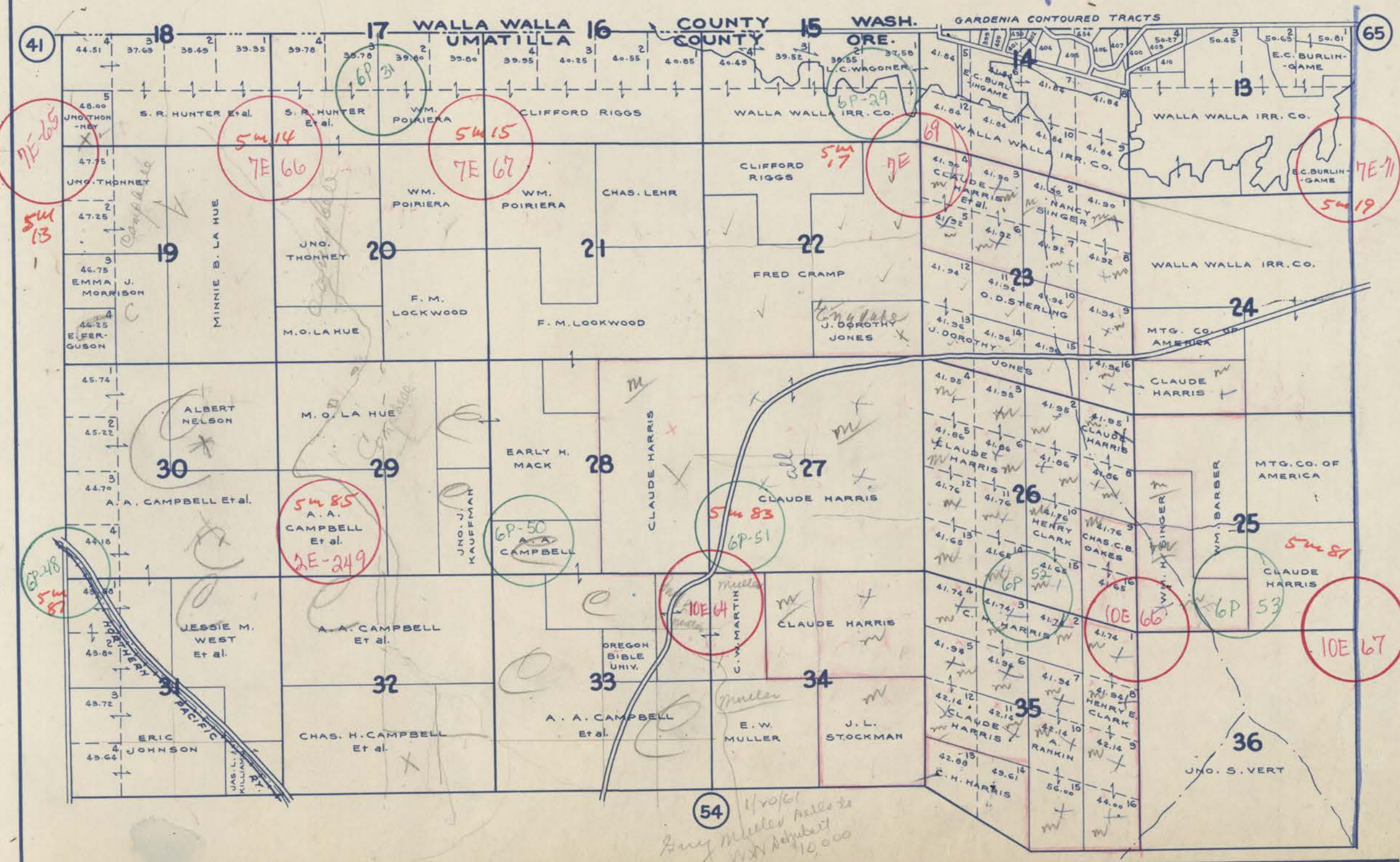


# TOWNSHIP 6 N., RANGE 33 E.W.M. UMATILLA COUNTY OREGON

SCALE 2 IN. = 1 MILE.  
DATED 1932

CHAS. F. METSKER CIVIL ENGINEER  
215 COMMERCE BLDG., PORTLAND, ORE.  
930 1/2 PACIFIC AVE., TACOMA, WASH.



- LEGEND -**
- PAVED ROADS
  - STATE HIGHWAYS
  - MARKET ROADS
  - DIRT ROADS
  - INFERIOR ROADS
  - RAILROADS
  - TRAILS
  - INTERMITTENT CREEKS
  - SCHOOLS