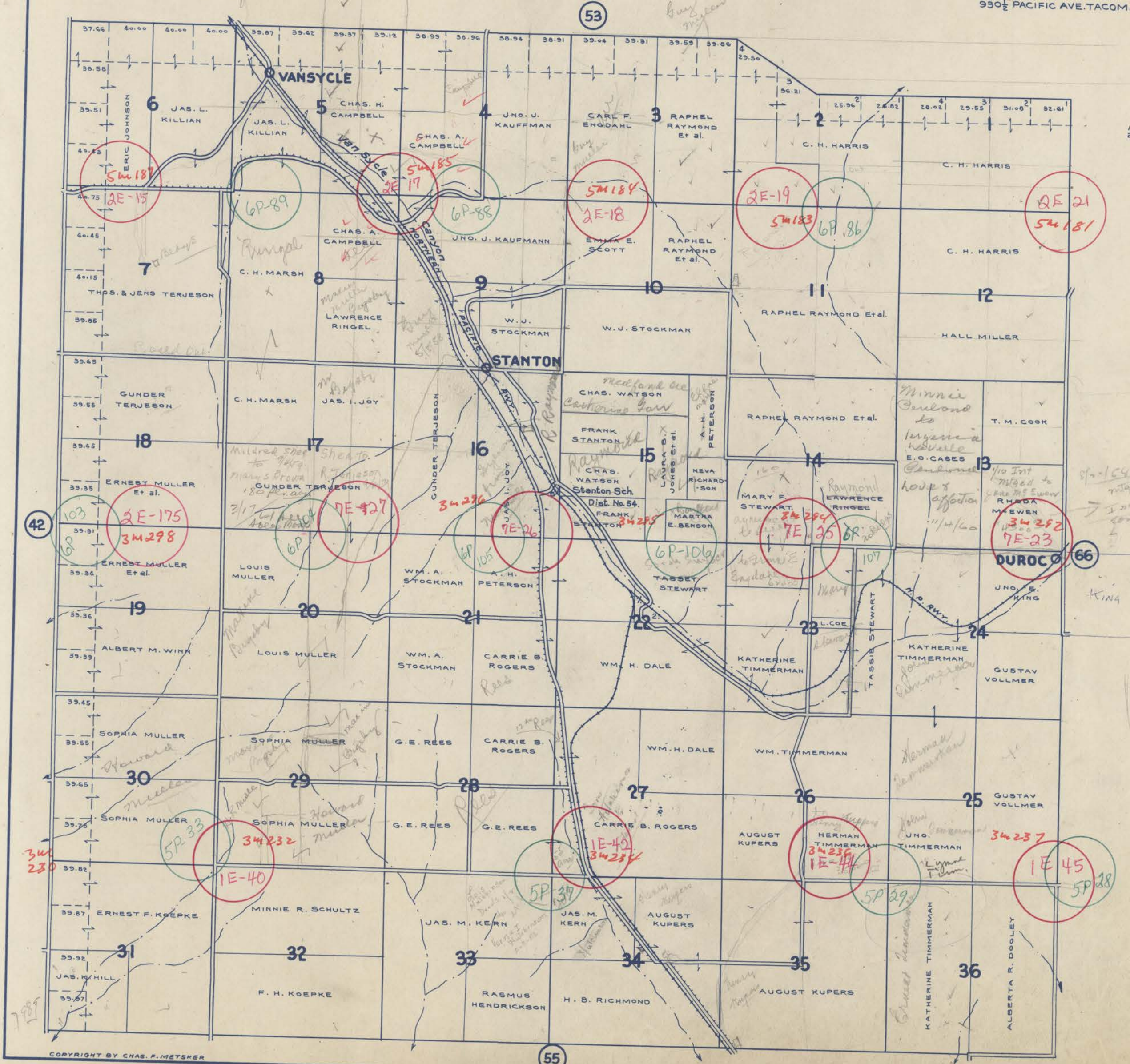


TOWNSHIP 5 N., RANGE 33 E.W.M. UMATILLA COUNTY OREGON

SCALE 2 IN. = 1 MILE
DATED 1932

CHAS. F. METSKER CIVIL ENGINEER
215 COMMERCE BLDG. PORTLAND, ORE.
930 1/2 PACIFIC AVE. TACOMA, WASH.



1- N. P. R. WY. CO.
2- A. DAVIS

*Sp. 104
note on this land to
Inland Empire Bank
for 1600 due 5-15-37*

- LEGEND -
- PAVED ROADS
 - STATE HIGHWAYS
 - MARKET ROADS
 - DIRT ROADS
 - INFERIOR ROADS
 - RAILROADS
 - TRAILS
 - INTERMITTENT CREEKS
 - SCHOOLS