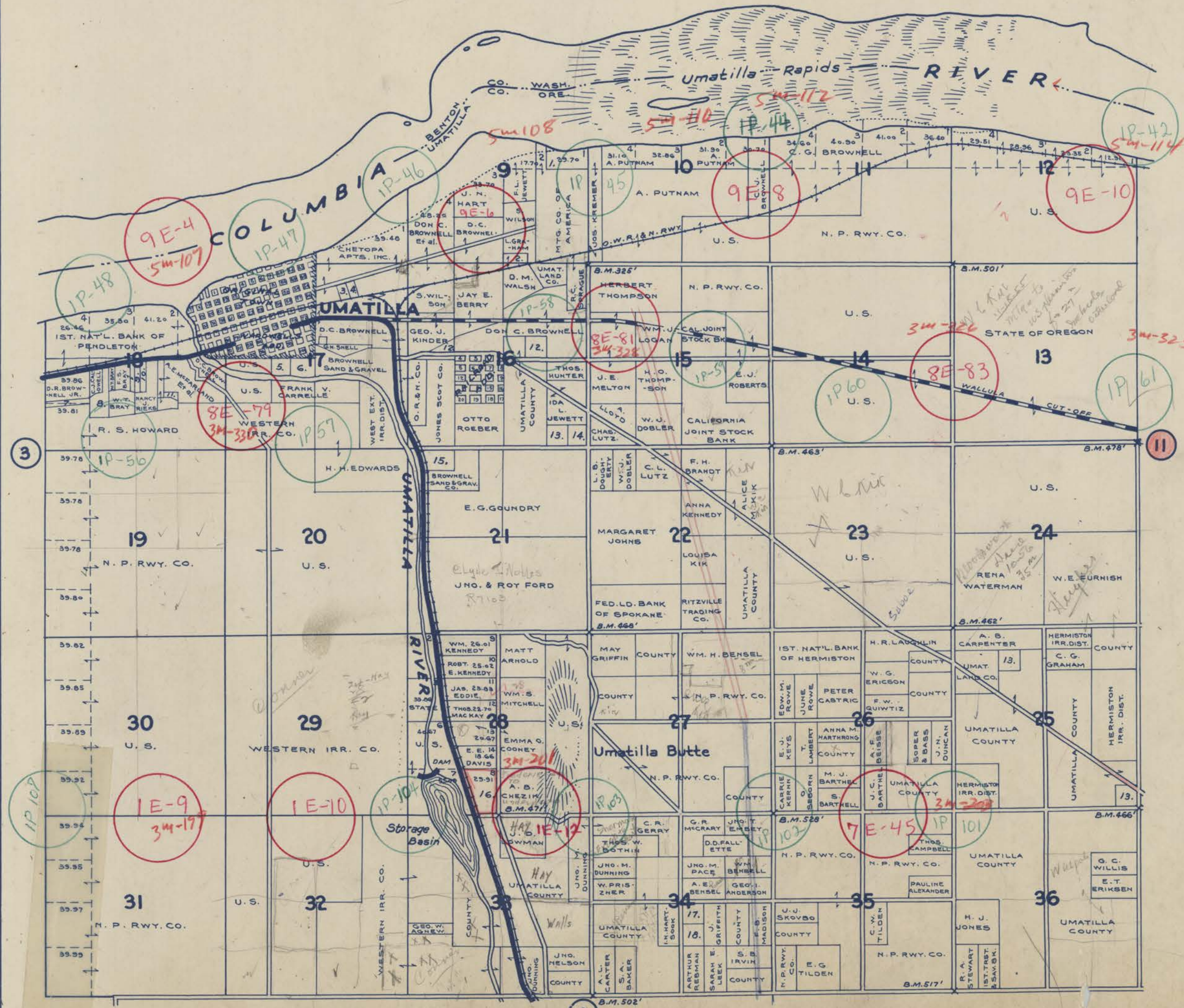


TOWNSHIP 5 N., RANGE 28 E.W.M. UMATILLA COUNTY OREGON

SCALE 2 IN. = 1 MILE
DATED 1932

CHAS. F. METSKER CIVIL ENGINEER
215 COMMERCE BLDG. PORTLAND, ORE.
930 1/2 PACIFIC AVE. TACOMA, WASH.



- 1-M. B. COLLINS
- 2-GUS TONIS
- 3-E. R. CHAPMAN
- 4-N. EDWARDS
- 5-THOS. SLATTERY
- 6-W. U. ROBERTS
- 7-J. S. HATFIELD
- 8-EMMA M. BROWNELL
- 9-W. R. NUGENT
- 10-ALICE R. NUGENT
- 11-FRANCIS S. BRAY
- 12-V. W. DUNCAN
- 13-HERMISTON IRR. DIST.
- 14-L. B. DOHERTY
- 15-GULLIFORD & HAMPTON
- 16-CARL SCHACKERMAYER
- 17-Geo. M. GOULD
- 18-MARGARET GOULD

-LEGEND-

- PAVED ROADS
- STATE HIGHWAYS
- MARKET ROADS
- DIRT ROADS
- INFERIOR ROADS
- RAILROADS
- TRAILS
- INTERMITTENT CREEKS
- SCHOOLS