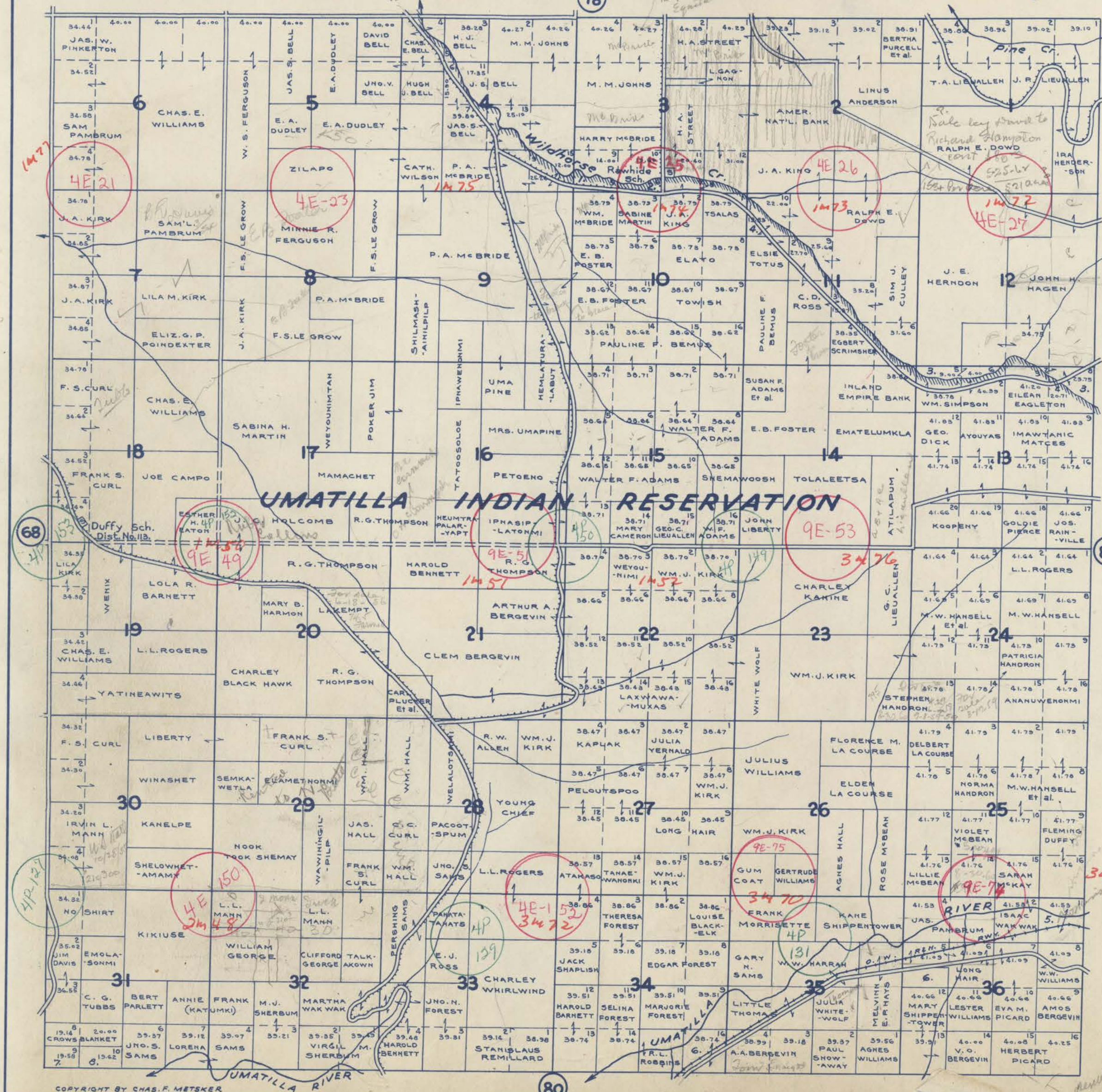


TOWNSHIP 3 N., RANGE 35 E.W.M.

SCALE 2 IN. = 1 MILE.
DATED 1932

UMATILLA COUNTY OREGON

CHAS. F. METSKER CIVIL ENGINEER
215 COMMERCE BLDG, PORTLAND, ORE.
930 1/2 PACIFIC AVE, TACOMA, WASH.



- 1- HARRY MCBRIDE
- 2- EDGAR A. SIMPSON
- 3- JOHN VERT
- 4- AKIKLASA
- 5- D.U. THOMPSON
- 6- PENDLETON WATER COMM.
- 7- ELIZA WAK WAK
- 8- HANCY WAK WAK

87 4P-147
3478

- LEGEND -**
- PAVED ROADS
 - STATE HIGHWAYS
 - MARKET ROADS
 - DIRT ROADS
 - INFERIOR ROADS
 - RAILROADS
 - TRAILS
 - INTERMITTENT CREEKS
 - SCHOOLS