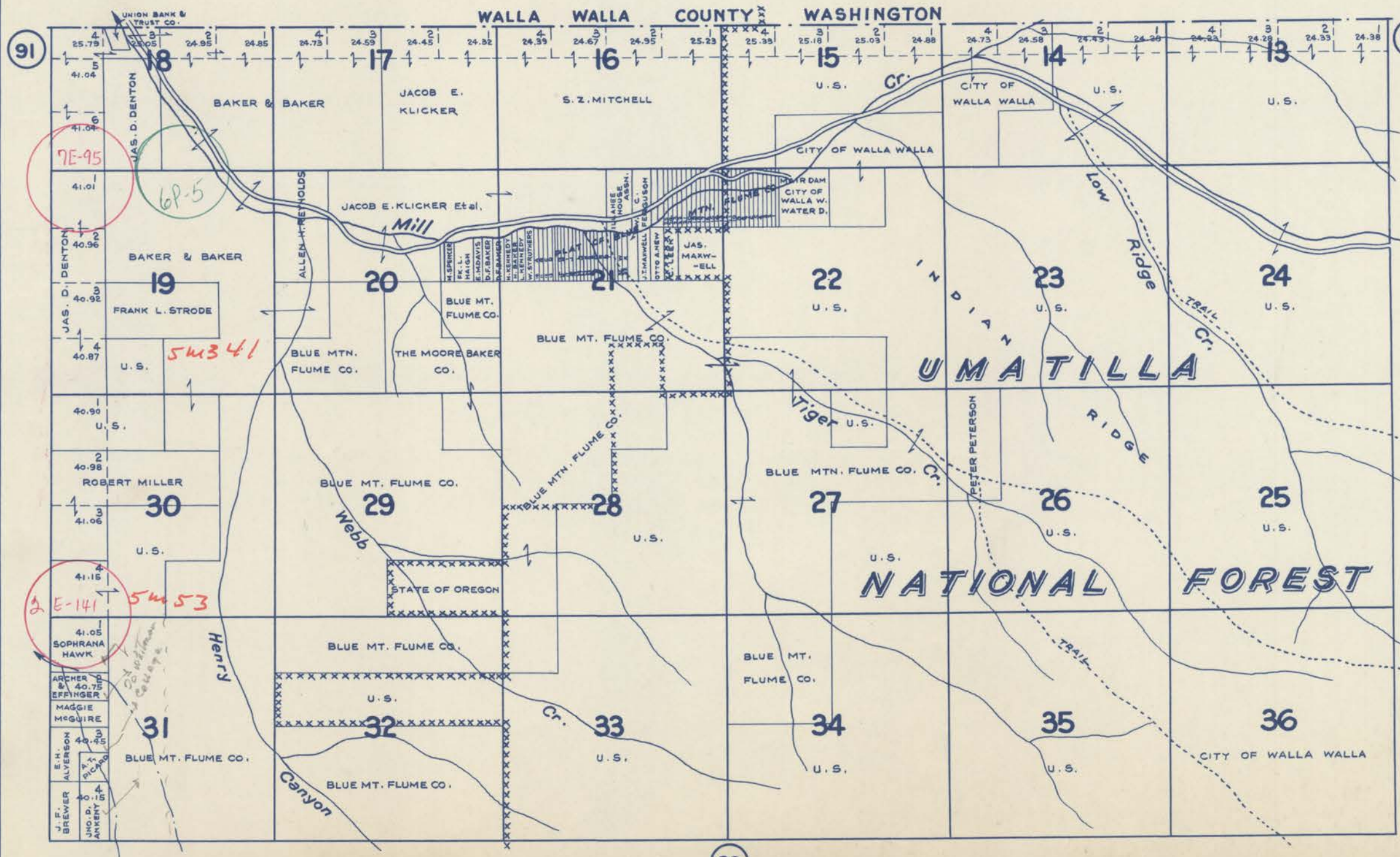


# TOWNSHIP 6 N., RANGE 38 E.W.M. UMATILLA COUNTY OREGON

SCALE 2 IN. = 1 MILE.  
DATED 1932

CHAS. F. METSKER CIVIL ENGINEER  
215 COMMERCE BLDG., PORTLAND, ORE.  
930 1/2 PACIFIC AVE., TACOMA, WASH.



- PLAT OF BLUE MTN.  
FLUME CO.
- A - CLARA C. GOSE
  - B - NORA WRIGHT Et al.
  - C - W. F. CROWE
  - D - W. E. LEONARD
  - E - " "
  - F - RESERVE
  - G - O. D. KEEN
  - H - " "
  - I - " "
  - J - E. L. CASEY
  - K - W. J. BEMUS
  - L - DANIEL EYRAUD
  - M - F. D. APPLIGATE
  - N - " "
  - O - J. W. INGRAM
  - P - " "
  - Q - " "
  - R - " "
  - S - " "
  - T - S. L. CHARNES
  - U - YARGAUCH
  - V - CLAUD AKRIDGE
  - W - P. J. PENTECOST
  - X - C. B. WEATHEMAN

- LEGEND -
- PAVED ROADS
  - STATE HIGHWAYS
  - MARKET ROADS
  - DIRT ROADS
  - INFERIOR ROADS
  - RAILROADS
  - TRAILS
  - INTERMITTENT CREEKS
  - SCHOOLS