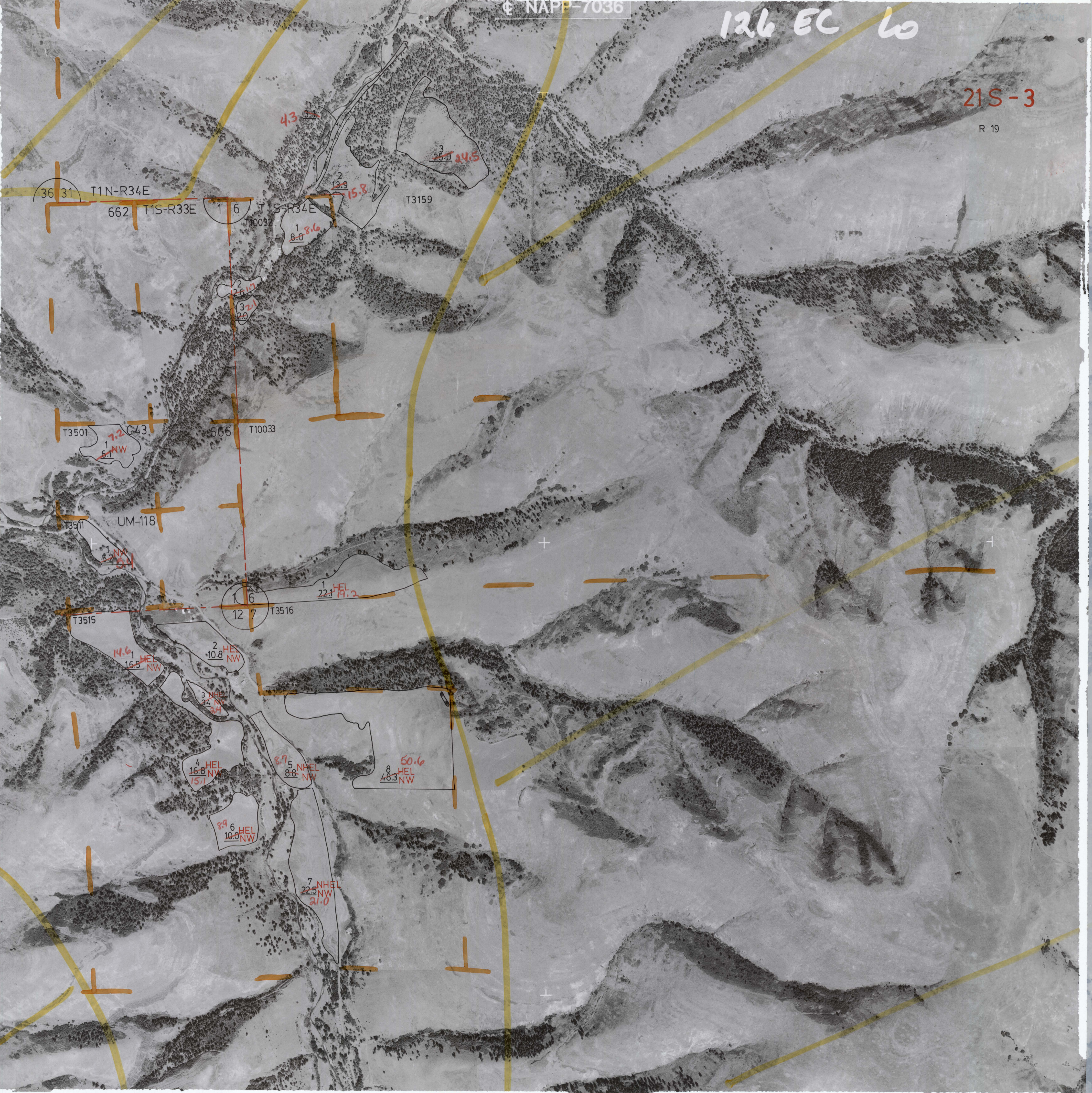


126 EC 60

21S-3

R 19



36 31 T1N-R34E

662 T1S-R33E

1 6 T1S-R34E

T3159

T3501

643

666

T10033

T3511

UM-118

T3515

1 6

12 7 T3516

14.6
16.5
HEL
NW

2
10.8
HEL
NW

4
16.8
15.1
HEL
NW

5
8.9
8.8
NHEL
NW

50.6
48.3
HEL
NW

8.9
10.0
HEL
NW

7
22.5
21.0
NHEL
NW

22.1
19.2
HEL

1
8.0
8.16

2
2.6
1.7
3
2.1
2.0

43

2
13.9
15.8

25.0
34.5