

27 EL 6

3 M-2

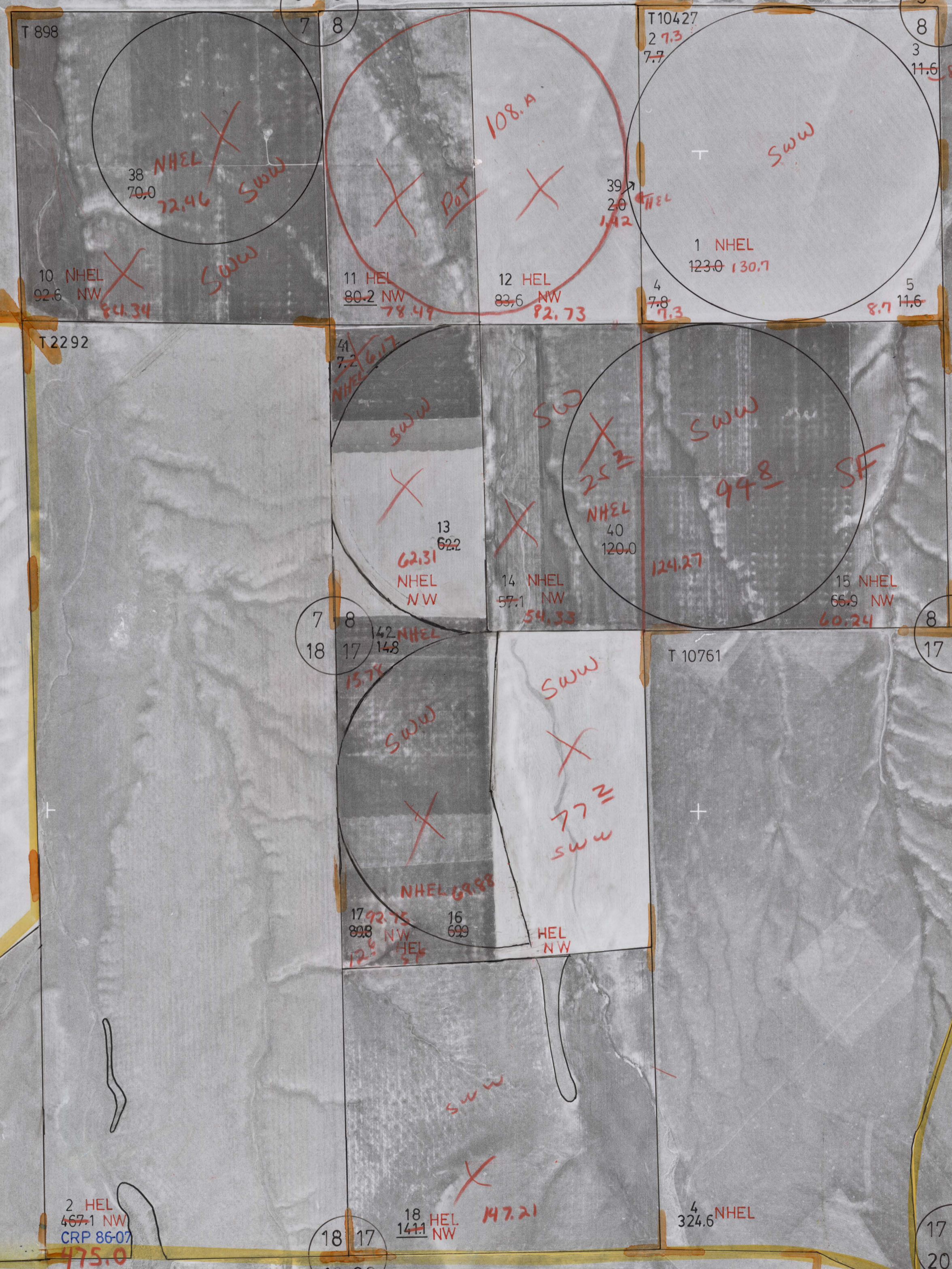
L 3

T2N-R28E

1 6
12 7

6 5
7 8

5 4
8 9



1
112.3 111.7
CRP 86 95/96/97/EX/01-10

2 HEL
467.1 NW
CRP 86-07
175.0

18 17
19 20

18 HEL
141.1 NW
147.21

4 NHEL
324.6

17 16
20 21

T 10424

HEL

T 898

T 10427

T 2292

T 10761