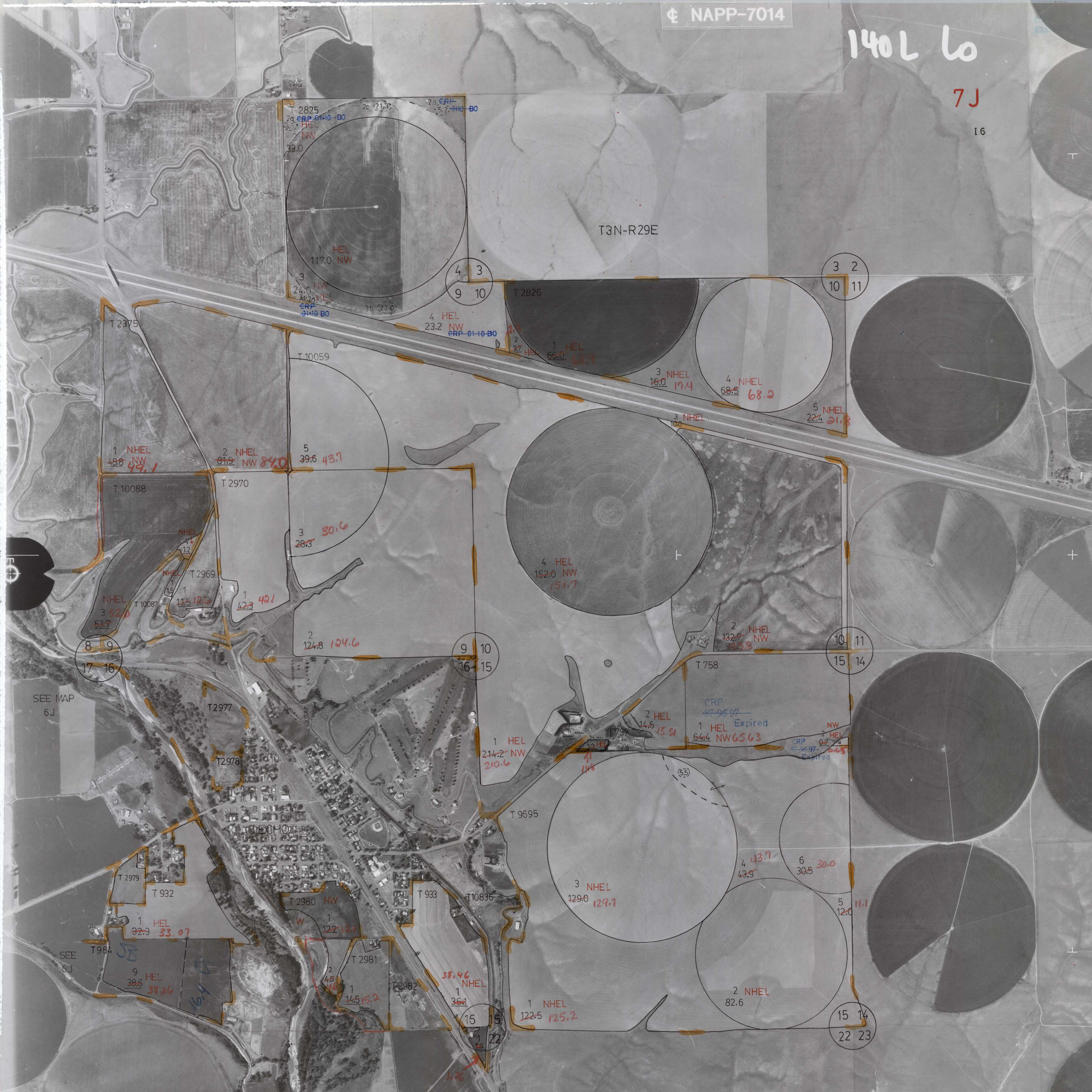


140 L 60

7J

16

T3N-R29E



SEE MAP 6J

SEE 5J

9 10
16 15

10 11
15 14

3 2
10 11

15 14
22 23

4 3
9 10

8 9
17 16

16 15
21 22

1 NHEL
48.8 NW
49.1

2 NHEL
81.9 NW
84.0

5
39.6 43.7

3
28.3 30.6

NHEL
3 52.0
53.7

NHEL
1 11.5 12.6
42.3 49.1

2
124.8 124.6

1 HEL
244.2 NW
210.6

2 HEL
14.6 15.1

1 HEL Expired
64.4 NW 65.63

2 HEL
14.6 15.1

3 NHEL
129.0 129.1

4 43.7
43.9

6 30.5
30.0

5 11.1
12.0

1 HEL
32.3 33.07

1 HEL
122.1 123.1

38.46 NHEL
1 36.1

9 HEL
38.6 38.26

2 4.5
14.5 15.2

1 NHEL
122.5 125.2

2 NHEL
82.6

T 2825
2a CRP-01-10-BO
HEL
NW
33.0

2c 21.3
2b CRP-01-10-BO
HEL
NW
33.0

2d CRP-01-10-BO
HEL
NW
33.0

T 2826
2a CRP-01-10-BO
HEL
NW
24.0

2b CRP-01-10-BO
HEL
NW
24.0

2c CRP-01-10-BO
HEL
NW
24.0

2d CRP-01-10-BO
HEL
NW
24.0

1 HEL
66.0 67.1

3 NHEL
16.0 17.4

4 NHEL
68.5 68.0

5 NHEL
22.4 21.8

3 NHEL
10.0 10.0

T 2375

T 10059

T 2970

T 10088

T 2969

T 10087

T 2977

T 2978

T 2979

T 932

T 2980 NW

T 933

T 10836

T 9695

T 758

T 984

T 2981

T 2982

T 2982

T 2982