

ALSO SEE SURVEYS 00-110-B, 02-066-B, 03-286-B, 06-565-A, 08-043-B, 12-145-B, 83-151-B, 88-012-B, 95-169-B, F-024-AX, H-225-B, Q-0075-AX, Q-1622-B, 95-016-C; CORNER RECORDS; G.L.O. SURVEYS; REDFIELD SURVEYS

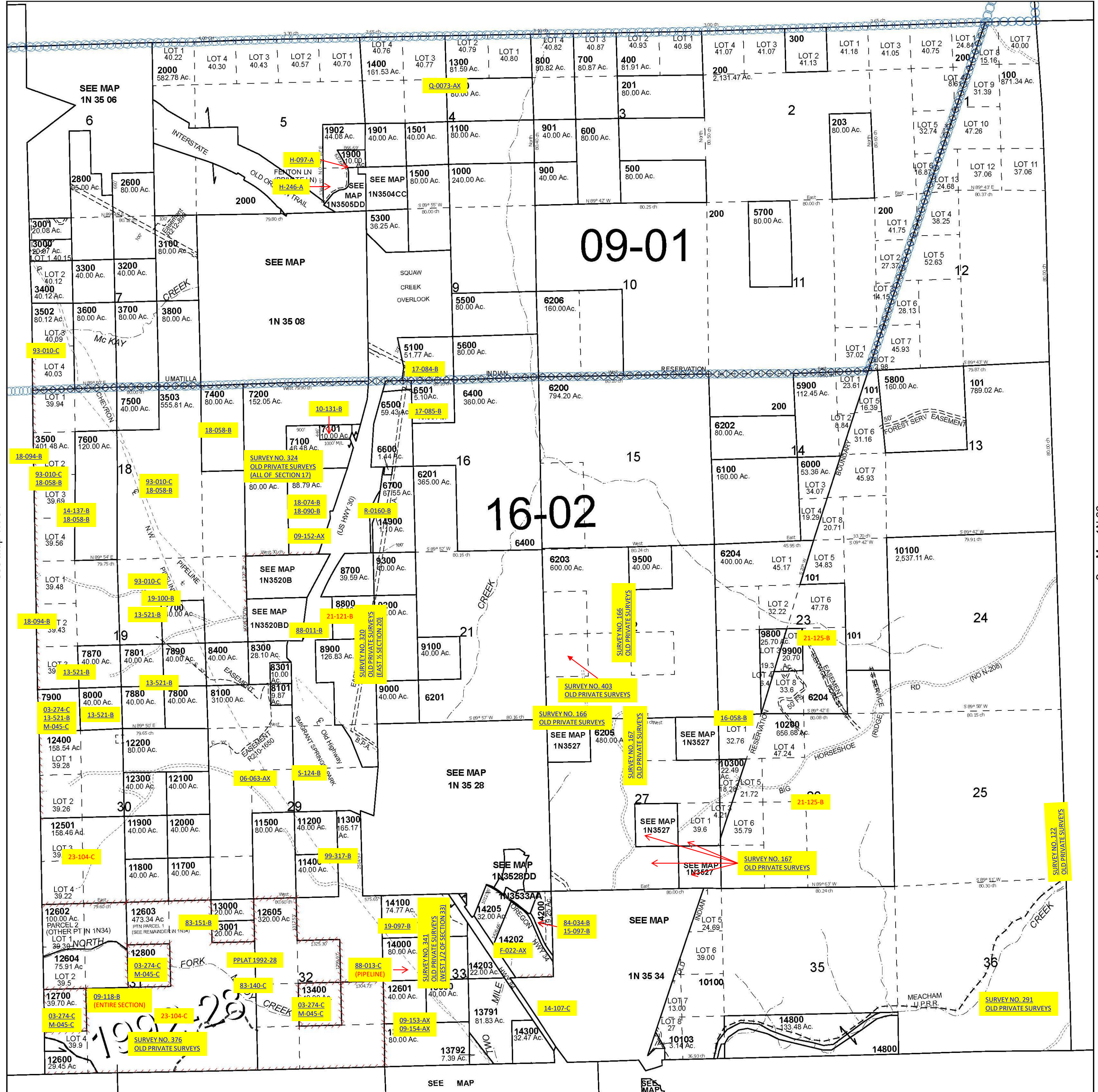
This map was prepared for Assessment & Taxation purposes only and was NOT prepared nor is it suitable for legal, engineering or surveying purposes.

# T1N R35E WM UMATILLA COUNTY SCALE 1" = 2,000'

## 1N 35

Cancelled Tax Lots	4400	6502	10000	11100	13300	14601
202	2801	4500	6503	10101	11301	13500
1600	2901	4500	6503	10101	11301	13500
1700	3501	4600	6800	10102	11600	13600
1800	3900	4700	6900	10400	12500	13900
2100	4000	4800	8200	10500	12502	14201
2200	4100	4900	8500-8505	10600	12503	14204
2300	4101	5000	8600	10700-10711	12590	14301
2400	4200	5200	9400	10800	12900	14400-14405
2500	4201	5400	9600	10900	13100	14500
2700	4300	6300	9700	11000	13200	14600

See Map 2N 35



See Map 1N 34

See Map 1N 36

Revised 11/27/2024

See Map 1S 35 04

## 1N 35