

ALSO SEE SURVEYS 95-205-B, 97-140-C, 96-112-C; CORNER RECORDS; G.L.O. SURVEYS; REDFIELD SURVEYS

This map was prepared for Assessment & Taxation purposes only and was NOT prepared nor is it suitable for legal, engineering or surveying purposes.

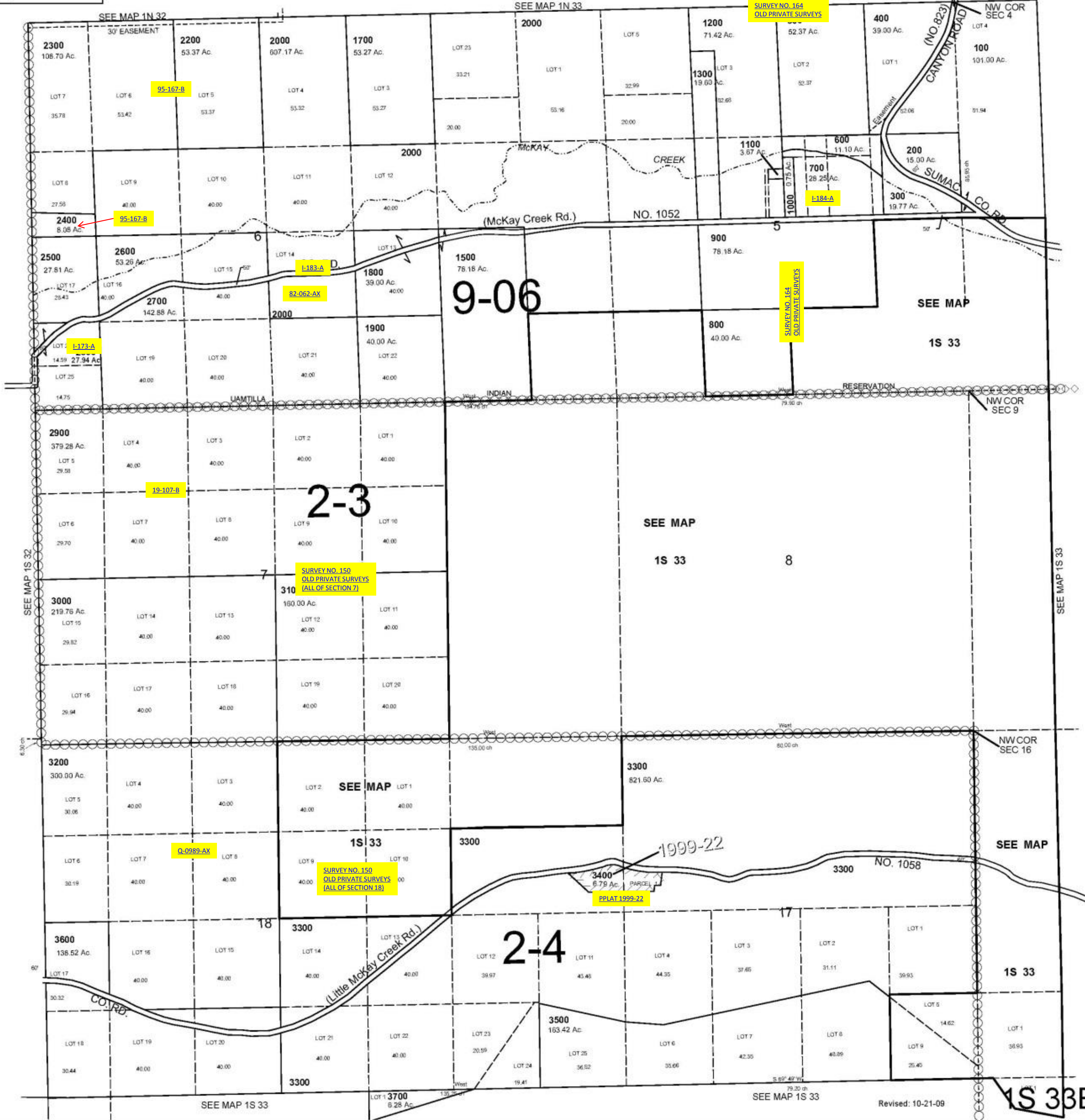
NW 1/4 T1S R33E WM UMATILLA COUNTY, OR

1S 33B

AERIAL PHOTO NO. 7P 17-23, 74-79 & 98-106



SCALE: 1" = 1000'



Revised: 10-21-09

1S 33B