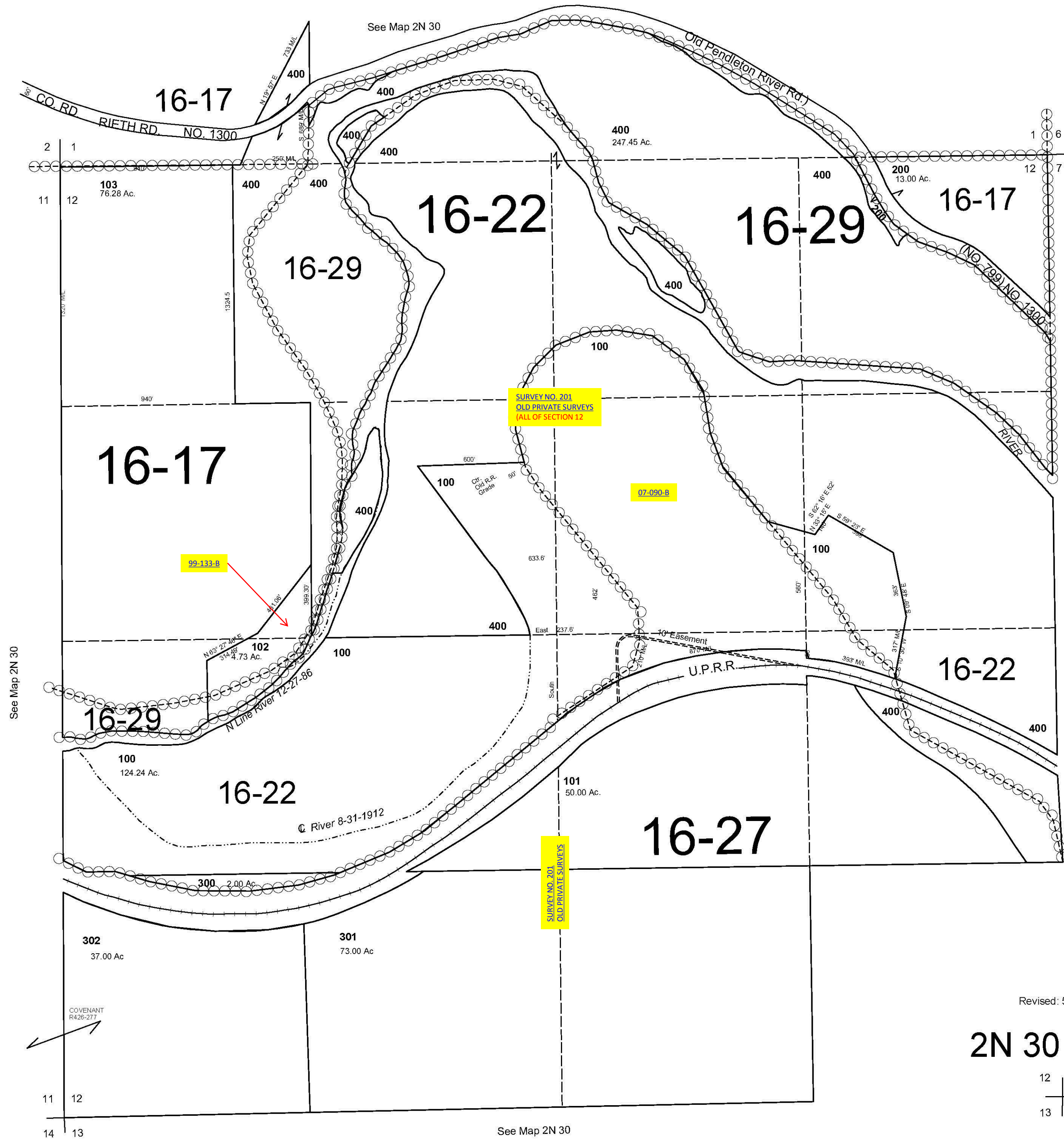


This map was prepared for Assessment & Taxation purposes only and was NOT prepared nor is it suitable for legal, engineering or surveying purposes.

SEC 12 T2N R30E WM
UMATILLA COUNTY
SCALE 1"=400'

2N 30 12
AERIAL PHOTO NO NZ 2P-183



Revised: 5/13/11
2N 30 12
12 17
13 18