

ALSO SEE SURVEYS 07-156-B, 06-462-C, 90-050-C, 92-092-C, 93-054-C; CORNER RECORDS; G.L.O. SURVEYS

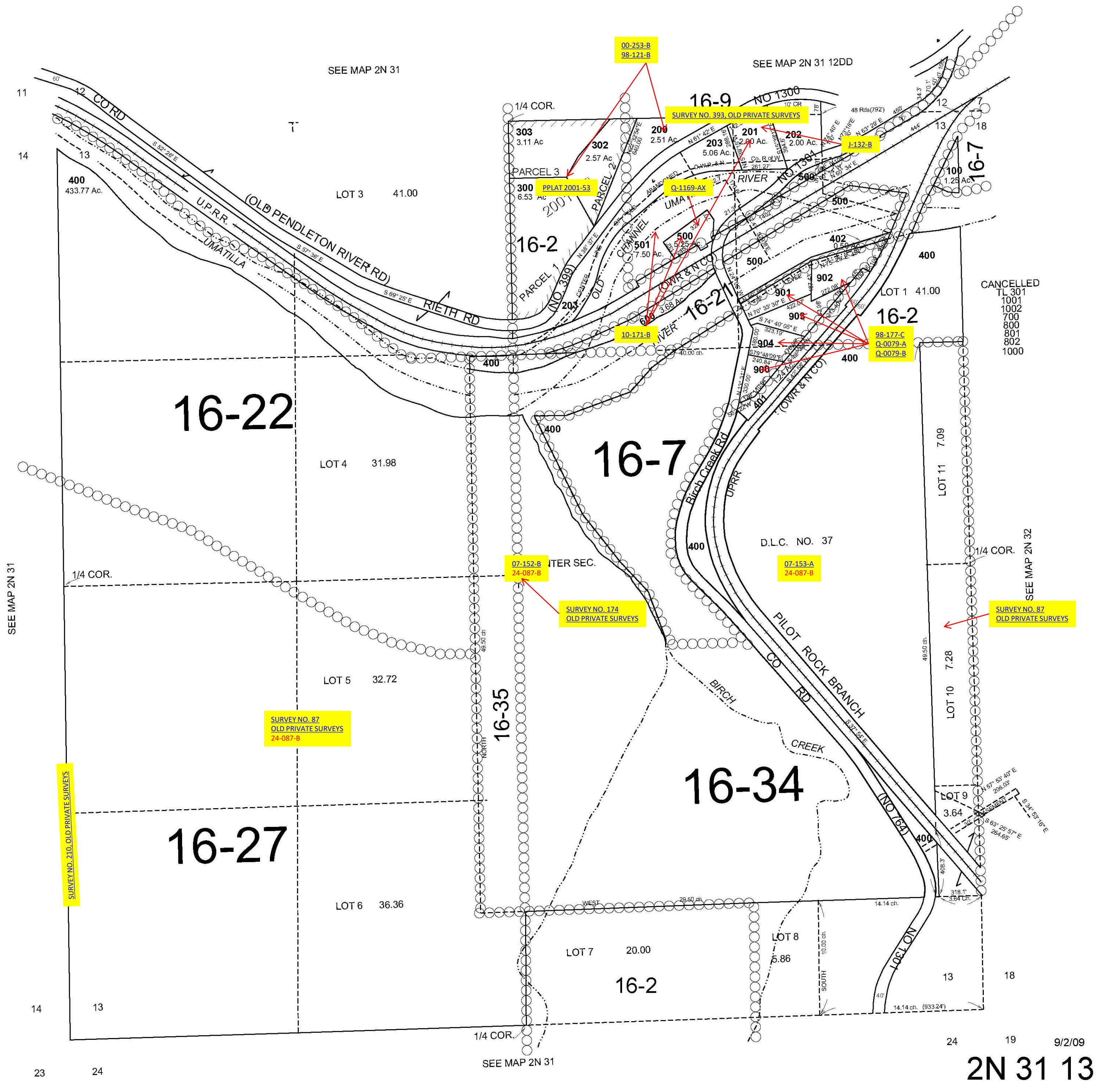
This map was prepared for Assessment & Taxation purposes only and was NOT prepared nor is it suitable for legal, engineering or surveying purposes.

# SEC 13 T2N R31E WM UMATILLA COUNTY

## 2N 31 13

Aerial Photo No. 3P-28

SCALE 1"=400'



9/2/09  
2N 31 13