

ALSO SEE SURVEYS 06-384-A, 13-050-B, 87-057-C, Q-0081-AX; SURVEY NO. 89A, OLD PRIVATE SURVEYS

This map was prepared for Assessment & Taxation purposes only and was NOT prepared nor is it suitable for legal, engineering or surveying purposes.

Cancelled Tax Lots

- 603
- 1000
- 1100
- 1200
- 1300
- 1301
- 1901

# NE 1/4 SE 1/4 SEC 01 T2N R32E WM

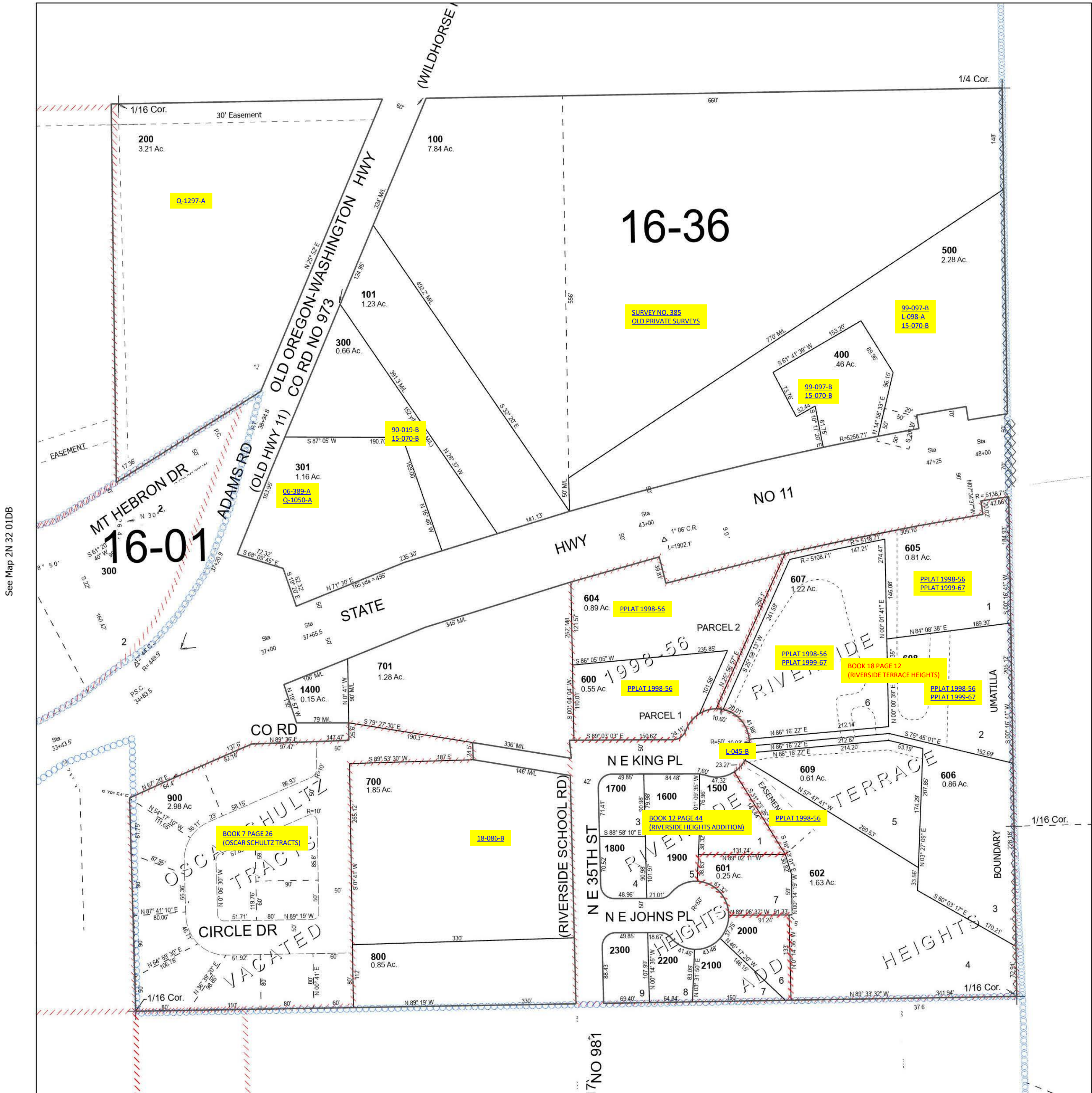
## UMATILLA COUNTY

SCALE 1" = 100'

Pendleton

### 2N 32 01DA

See Map 2N 32 01



See Map 2N 32 01DB

See Map 2N 32 01E

Revised 7/20/2023

See Map 2N 32 01DD

### 2N 32 01DA