

THIS MAP WAS PREPARED FOR
ASSESSMENT PURPOSES ONLY

NW1/4 SE1/4 Sec.3 T.2N R.32E.W.M.
UMATILLA COUNTY
1" = 50'

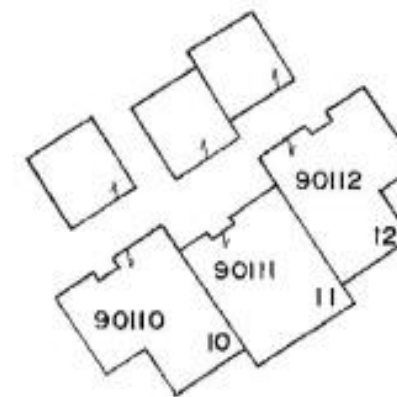
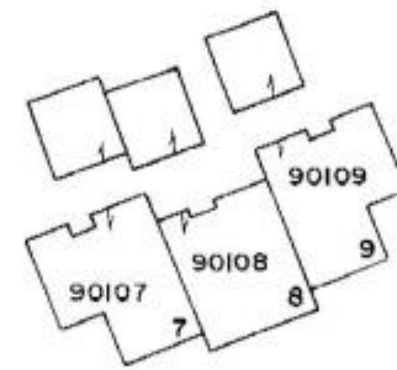
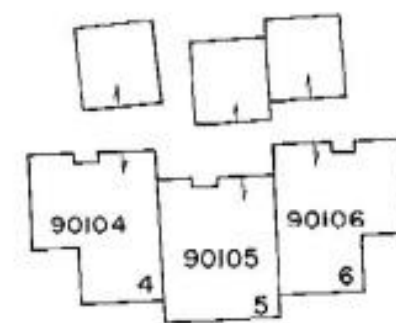
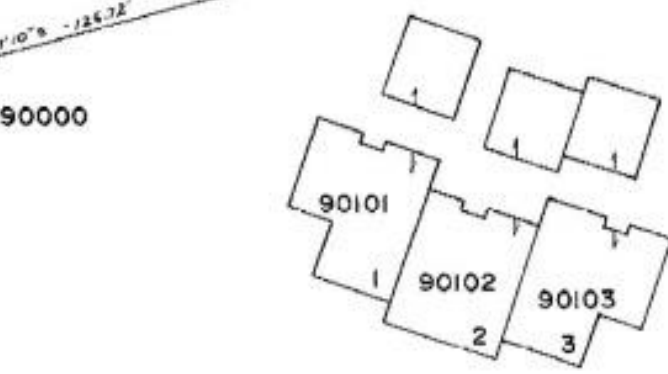
2N 32 03Db
SUPPLEMENTAL
MAP NO.1

See Map 2N 32 03

NW 12TH ST

See Map 2N 32 03CA

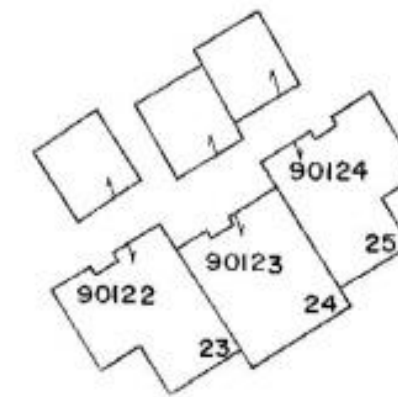
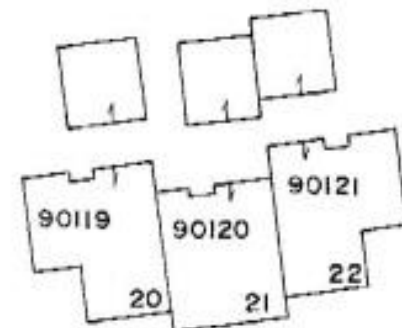
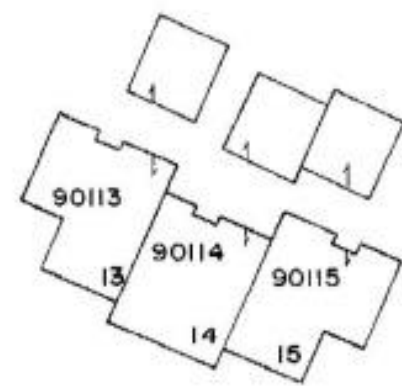
90000



PARKRIDGE

16-1

NORTH



See Map 2N 32 03DA

NOTE: A general common element,
the recreation room, is located
in the basement of unit 14 according
to the plot, but is actually located
in the basement of unit 15.

COMMON AREA

See Map 2N 32 03DB

2N 32 03 Db
SUPPLEMENTAL
MAP NO.1