

ALSO SEE SURVEYS 89-083-B, H-047-AX, 89-120-C, 89-129-B, 90-050-C, 92-092-C, 93-054-C, 96-055-G, 04-129-G, Q-0414-B; CORNER RECORDS; G.L.O. SURVEYS

This map was prepared for Assessment & Taxation purposes only and was NOT prepared nor is it suitable for legal, engineering or surveying purposes.

SEC 15 T2N R32E WM UMATILLA COUNTY

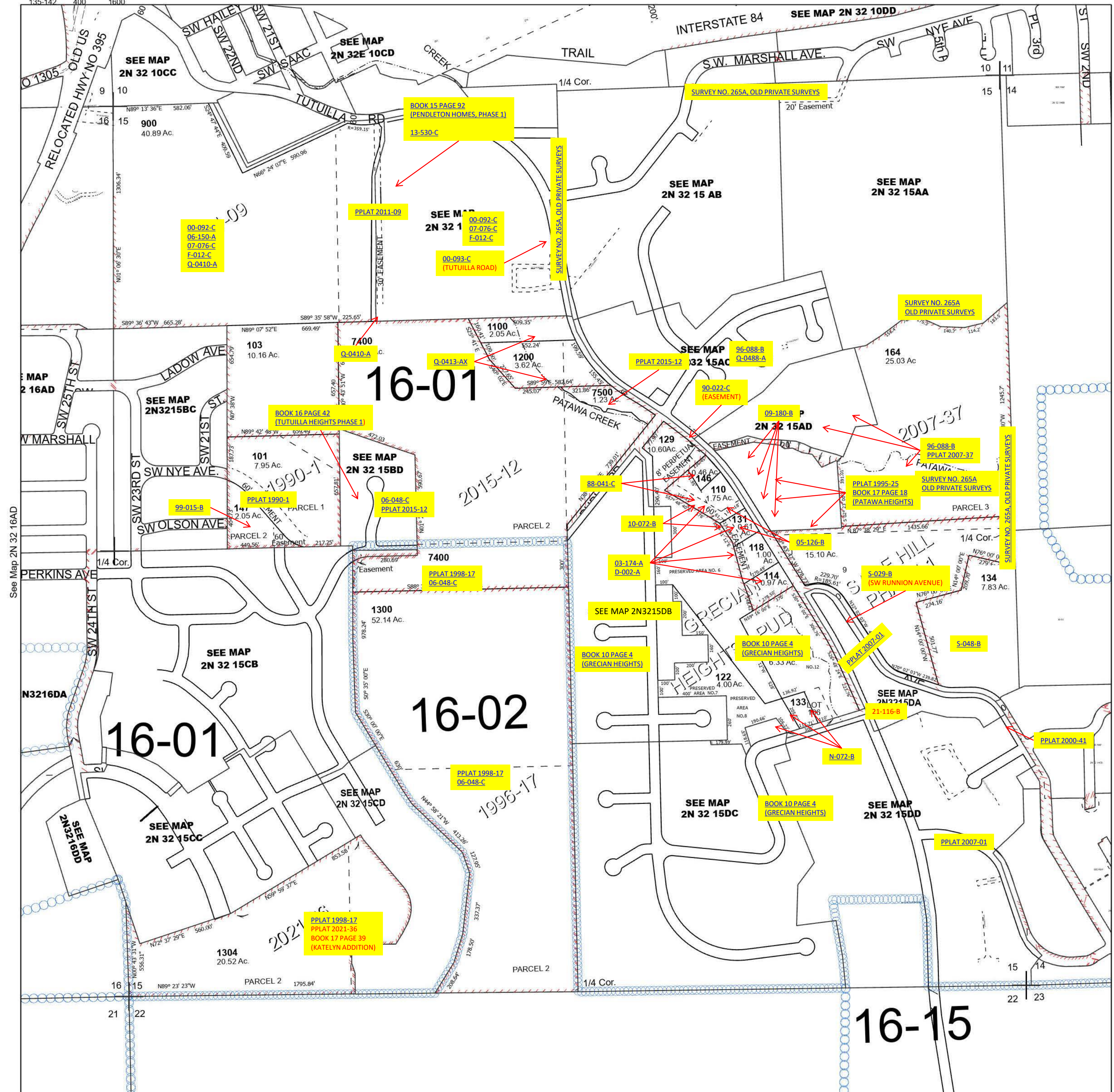
2N 32 15

Pendleton

SCALE 1" = 400'

See Map 2N 32 15AB

Cancelled Tax Lots			
102	144	500	1700
104-109	145	600	4900
111-113	148	700-702	5000
116	151	800	5100
120	154	901	5200
123	157	903	5300
119	159-161	1301-1303	5400
124-128	200-202	1400	
132	300	1500	
135-142	400	1600	



Revised 7/28/2023

See Map 2N 32

2N 32 15