

ALSO SEE SURVEY 04-129-G

# SE 1/4 SE1/4 SEC 15 T2N R32E WM

# UMATILLA COUNTY

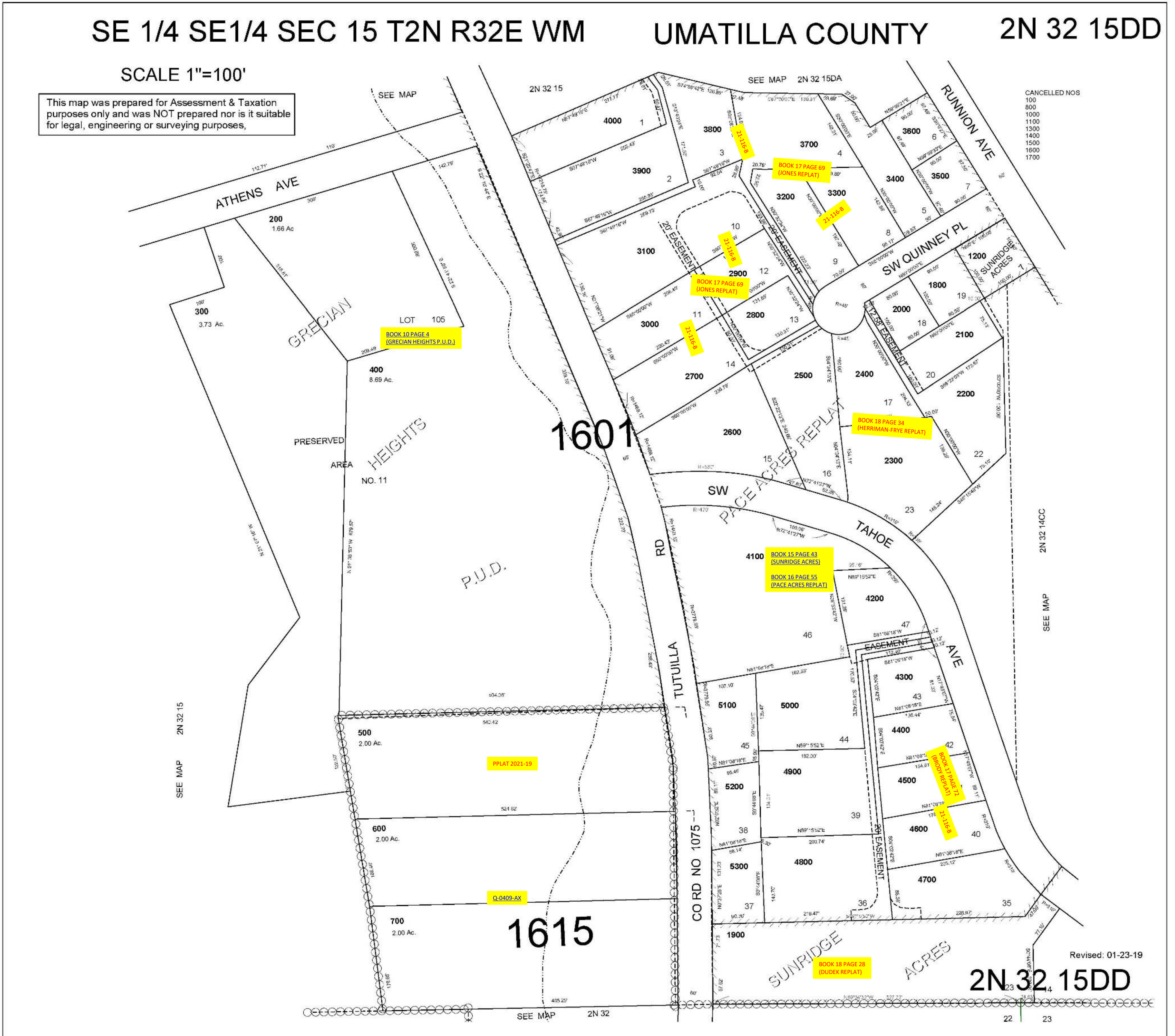
# 2N 32 15DD

SCALE 1"=100'

This map was prepared for Assessment & Taxation purposes only and was NOT prepared nor is it suitable for legal, engineering or surveying purposes,

CANCELLED NOS

- 100
- 800
- 1000
- 1100
- 1300
- 1400
- 1500
- 1600
- 1700



Revised: 01-23-19

## 2N 32 15DD