

ALSO SEE SURVEYS J-156-C, Q-0422-A, Q-0428-A

This map was prepared for Assessment & Taxation purposes only and was NOT prepared nor is it suitable for legal, engineering or surveying purposes.

# NW1/4 SW1/4 SEC 16 T2N R32E WM UMATILLA COUNTY

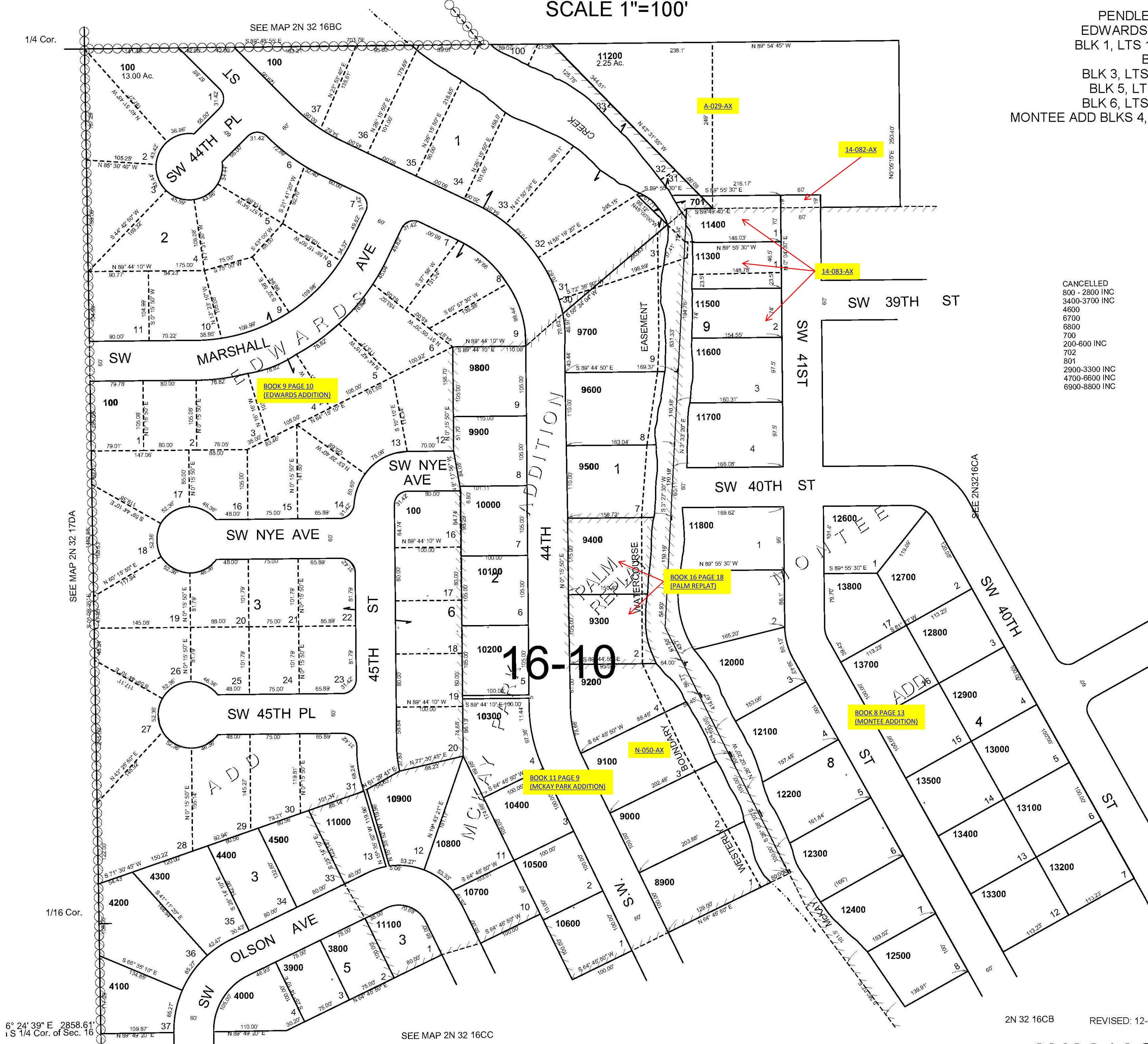
## 2N3216CB

Aerial Photo No. 4P-59

SCALE 1"=100'

PENDLETON  
EDWARDS ADD  
BLK 1, LTS 19-37  
BLK 2  
BLK 3, LTS 1-37  
BLK 5, LTS 1-4  
BLK 6, LTS 7-23  
MONTEE ADD BLKS 4,8 & 9

CANCELLED  
800 - 2800 INC  
3400-3700 INC  
4600  
6700  
6800  
700  
200-600 INC  
702  
801  
2900-3300 INC  
4700-6600 INC  
6900-8800 INC



6° 24' 39" E 2858.61  
S 1/4 Cor. of Sec. 16

SEE MAP 2N 32 16CC

2N 32 16CB REVISED: 12-01-15

## 2N3216CB