

ALSO SEE SURVEYS 06-144-A, 06-297-B, 06-370-B, 08-024-B, 13-062-AX, Q-0437-A, Q-0439-AX, S-094-AX, 92-092-C, 93-054-C, 94-109-C, 96-055-G, D-004-A; CORNER RECORDS; G.L.O. SURVEYS

This map was prepared for Assessment & Taxation purposes only and was NOT prepared nor is it suitable for legal, engineering or surveying purposes.

SEC 21 T2N R32E WM UMATILLA COUNTY

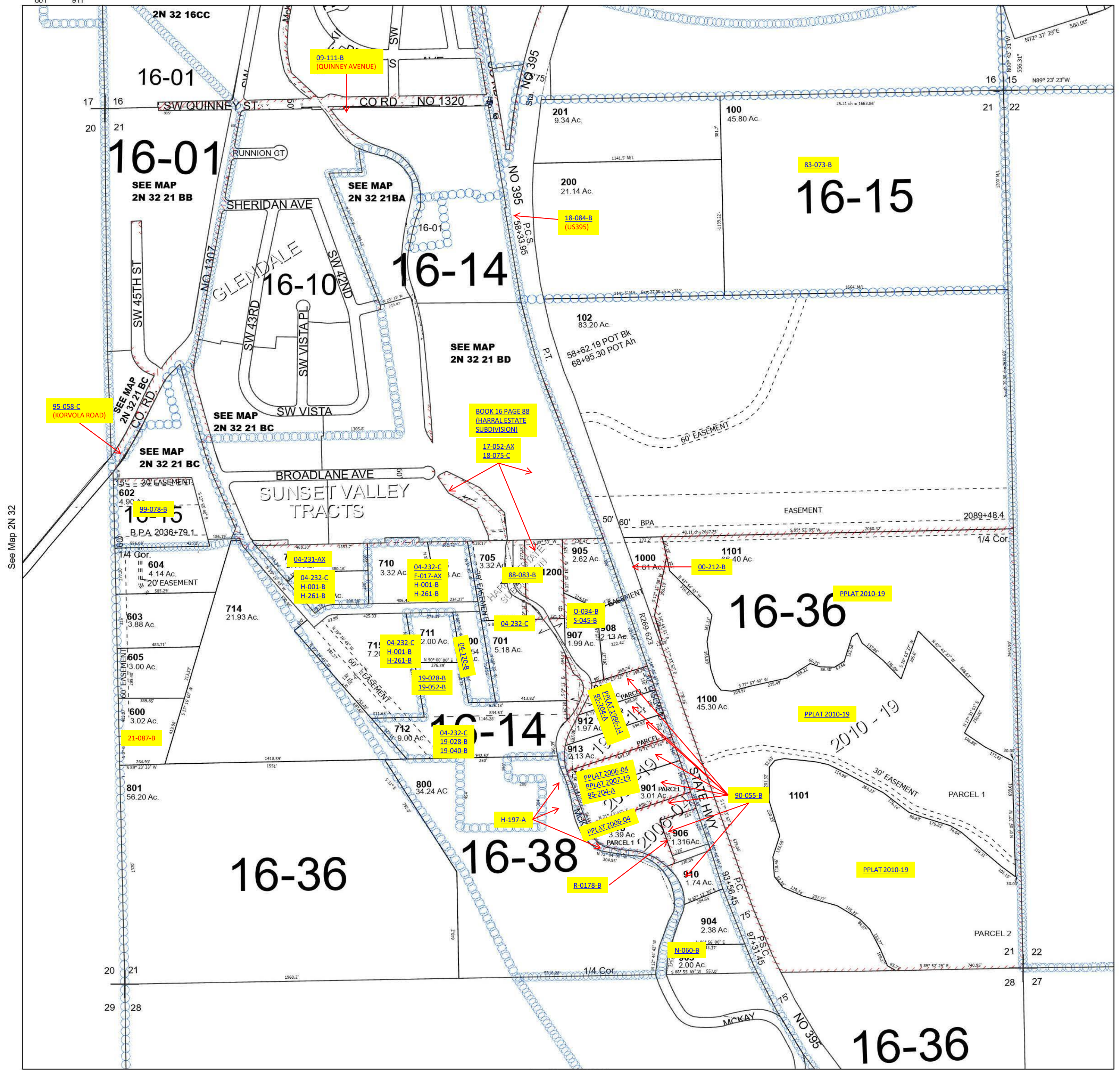
2N 32 21

SCALE 1" = 400'

See Map 2N 32 16

Cancelled Tax Lots

101	606	914
300	702	
301	703	
302	707	
400	709	
401	713	
500	802	
501	902	
502	909	
601	911	



See Map 2N 32

See Map 2N 32

Revised 4/27/2023

See Map 2N 32 28

2N 32 21